



## BEHIND THE SCENES

# From blue bins to brand-new products

Ever wonder what happens to your recyclables after you toss them into your blue bin? Let's take a quick trip through the recycling journey:

### 1. Into the Blue Bin They Go

Cardboard, paper, cans, glass bottles, and rigid plastics all go in together. Be sure all containers are empty, clean, and dry. One bin, many materials, all ready for their next life!

### 2. Off to the Transfer Station

Your mixed recyclables head to the Oroville Transfer Station, where they're piled and prepped for the next big step.

### 3. Onward to the MRF

At the Material Recovery Facility (MRF), a team of people and high-tech machines get to work. They separate everything into clean, tidy streams so each material can be transformed into something new.

## SORTED FOR REMANUFACTURING

### Cardboard and Paper

Paper of all kinds is sorted by grade, then dropped into a massive, blender-like pulping drum with warm water. It swirls into pulp while staples, tape, coatings, and ink are filtered out. What's left is rolled into fresh sheets, ready to make something new.

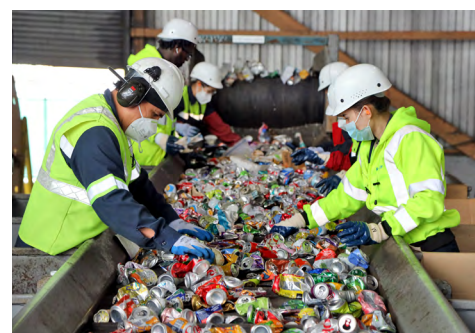
### Metal and Cans

Cans get washed, shredded, and melted in enormous furnaces. Heat naturally removes labels and coatings.



**After sorting, recyclables are baled according to type — metal, plastic, paper, cardboard — and sold for remanufacturing.**

The clean metal is cast into solid ingots or thin sheets — materials that can be recycled again and again.



### Rigid Plastics

Plastics are sorted by resin type and ground into tiny flakes. After washing and density separation, they're melted

into small pellets called nurdles. These nurdles are the building blocks of new plastic items:

- #1: water and soda bottles
- #2: detergent bottles and milk jugs
- #5: tubs and yogurt cups

### Glass Bottles and Jars

Glass is separated by color, then workers remove the labels and caps. The glass is washed, dried, and crushed into small pieces called cullet. Cullet is melted to 1600 °F, then molded into new containers. Glass, like aluminum, is infinitely recyclable.

## SAY NO TO OVERFLOW

Overfilling containers can create safety and cleanliness issues. When lids aren't fully closed, debris can spill into the street, especially on windy days. Open lids also attract increased pest activity.

Be sure you close your container lids completely when putting them out for service collection.

Customers receive two warnings before overage charges are applied.

If your containers are consistently too full to close properly, call Customer Service at **530.533.5868** to adjust your service level.



## ALL RECYCLABLES

### NOW ACCEPTED TOGETHER

Large recycling bins can take it all — cardboard and recyclables.

There is no need to keep recyclable containers in a separate receptacle. Just place your cans, bottles, rigid plastics, and paper in the large bin with your cardboard and let us sort them for you!

Consolidating cardboard with other recyclables means fewer containers on-site and less confusion about where each item belongs.

Ready to optimize your setup? Give our customer service team a call at **530.533.5868**.

**You can put all clean and dry recyclables into the same bin as cardboard. Please ensure the lid is closed for collection.**



### KNOW THE DIFFERENCE:

## Recyclable and unrecyclable plastics

Have you ever wondered whether a particular plastic is recyclable?

Many non-recyclable plastics are either made of mixed materials or are too thin to be processed.

### THESE TYPES OF FLIMSY PLASTICS DO NOT BELONG IN THE RECYCLING BIN:

- ✗ Plastic bags
- ✗ Plastic wrap/wrappers
- ✗ Styrofoam
- ✗ Plastic straws/cutlery
- ✗ Bubble wrap



### THESE RIGID, HARDER PLASTICS SHOULD BE RECYCLED:

Ensure they are empty, clean, and dry before you put them in the blue bin.

- ➔ Plastic bottles
- ➔ Plastic jugs
- ➔ Plastic tubs
- ➔ Plastic containers



**NEVER PLACE THESE ITEMS IN YOUR LANDFILL BIN**

- Sharps and medication
- Fluorescent bulbs
- Flammables, pesticides, or herbicides
- Electronic waste

### HAZARDOUS WASTE DISPOSAL DROP-OFF

Recology Butte Colusa Counties  
2720 South Fifth Avenue, Oroville 95965  
9 AM – 2 PM first & third Fridays of the month