



BEHIND THE SCENES

From blue bins to brand-new products

Ever wonder what happens to your recyclables after you toss them into your blue bin? Let's take a quick trip through the recycling journey:

1. Into the Blue Bin They Go

Cardboard, paper, cans, glass bottles, and rigid plastics all go in together. Be sure all containers are empty, clean, and dry. One bin, many materials, all ready for their next life!

2. Off to the Transfer Station

Your mixed recyclables head to the Oroville Transfer Station, where they're piled and prepped for the next big step.

3. Onward to the MRF

At the Material Recovery Facility (MRF), a team of people and high-tech machines get to work. They separate everything into clean, tidy streams so each material can be transformed into something new.

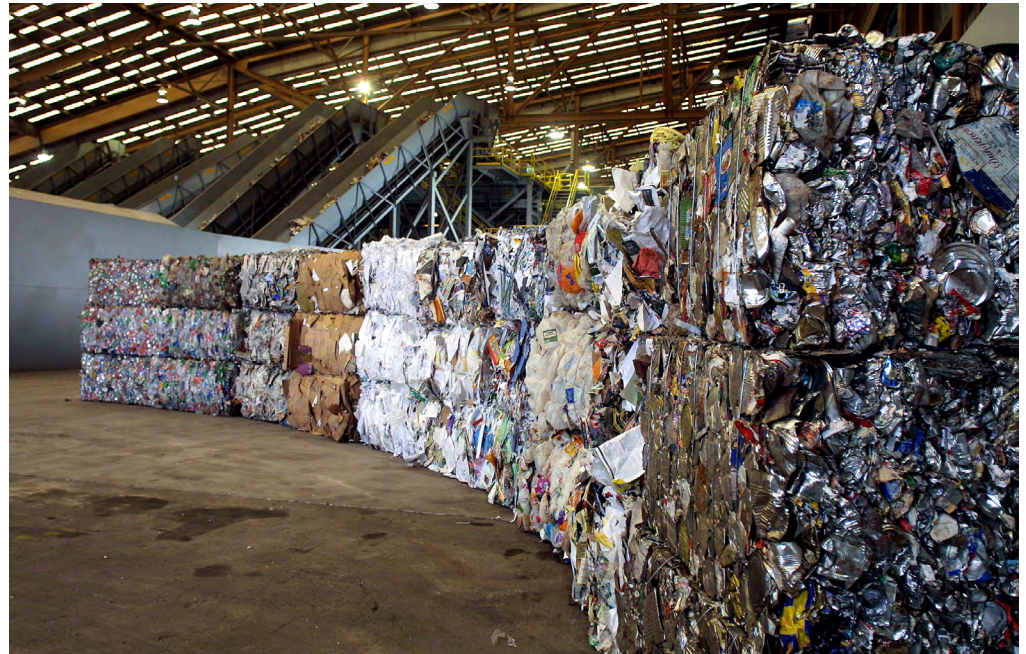
SORTED FOR REMANUFACTURING

Cardboard and Paper

Paper of all kinds is sorted by grade, then dropped into a massive, blender-like pulping drum with warm water. It swirls into pulp while staples, tape, coatings, and ink are filtered out. What's left is rolled into fresh sheets, ready to make something new.

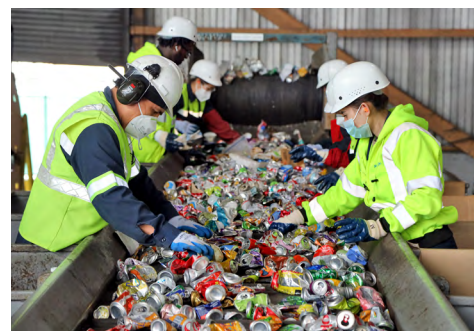
Metal and Cans

Cans get washed, shredded, and melted in enormous furnaces. Heat naturally removes labels and coatings.



After sorting, recyclables are baled according to type — metal, plastic, paper, cardboard — and sold for remanufacturing.

The clean metal is cast into solid ingots or thin sheets — materials that can be recycled again and again.



Rigid Plastics

Plastics are sorted by resin type and ground into tiny flakes. After washing and density separation, they're melted

into small pellets called nurdles. These nurdles are the building blocks of new plastic items:

- #1: water and soda bottles
- #2: detergent bottles and milk jugs
- #5: tubs and yogurt cups

Glass Bottles and Jars

Glass is separated by color, then workers remove the labels and caps. The glass is washed, dried, and crushed into small pieces called cullet. Cullet is melted to 1600 °F, then molded into new containers. Glass, like aluminum, is infinitely recyclable.

SAY NO TO OVERFLOW

Overfilling containers can create safety and cleanliness issues. When lids aren't fully closed, debris can spill into the street, especially on windy days. Open lids also attract increased pest activity.

Be sure you close your container lids completely when putting them out for service collection.

Customers receive two warnings before overage charges are applied.

If your containers are consistently too full to close properly, call Customer Service at **530.533.5868** to adjust your service level.



TENANT EDUCATION

BOOST GREEN LIVING AT YOUR PROPERTY

If you are a property owner looking for a way to educate your tenants about what is and isn't recyclable, let Recology handle it.

Recology's Waste Zero team specializes in providing outreach and education to the community. Our team can supply:

- Door hangers
- Compost pails
- Tenant meetings
- Sorting guides
- Flyers

If you are interested in customized training for your residents, contact our Waste Zero team at rbccwastezero@recology.com



STAY SB 1383 COMPLIANT:

Container Labeling Made Easy

California SB 1383 requires that indoor and outdoor disposal receptacles be clearly labeled and/or color-coded — green for organics, blue for recycling, and gray for landfill.

Our team regularly checks routes to ensure every bin and cart meets the law's standards. During these audits, we may add or swap labels on your Recology containers, or replace a container to help you achieve compliance. And it's all free of charge.

Want to learn more about labeling requirements, get some new labels, or request a replacement container? Email rbccwastezero@recology.com or call **530.533.5868** and ask to speak to a Waste Zero specialist.

We'll help you keep your recycling, compost, and landfill setouts properly signed and compliant.



NEVER PLACE THESE ITEMS IN YOUR LANDFILL BIN

- Sharps and medication
- Fluorescent bulbs
- Flammables, pesticides, or herbicides
- Electronic waste

HOUSEHOLD HAZARDOUS WASTE FACILITY
 1101 Marauder Street, Chico 95973
 9 AM – 1 PM Friday, 9 AM – 4 PM Saturday
 Call **530.343.5488** for an appointment.