

**TOP
TIPS**

BE GREEN WITH BURLINGAME

MULTIFAMILY EV CHARGING

Get EV charging stations for little to no cost at your property through Peninsula Clean Energy's EV Ready Program. The program offers free design assistance and rebates for installing EV chargers. Other Burlingame commercial properties have benefitted from this program and over 70 EV stations have been installed to date.

Contact PCE at 650-542-8479 to learn more about starting the program at your property. PenCleanEnergy.com/EVR

UPCOMING FREE WEBINAR

Learn how to access EV charger rebates and free technical assistance for your property in this 30-minute session.

Tuesday, October 14, 2025
12:00 p.m. - 1:00 p.m.

SCAN ME



COMMERCIAL COMPOSTING

All businesses and multifamily buildings are required to have a green composting bin for organic waste.

If you don't currently subscribe to composting services, please call Recology at 650-595-3900.

If your business does not generate any organic waste, apply for a waiver at RethinkWaste.org/Waiver.

Businesses that do not subscribe for compost or apply for a waiver will receive a notice of violation with future penalties.

SCAN ME



www.burlingame.org/sustainability

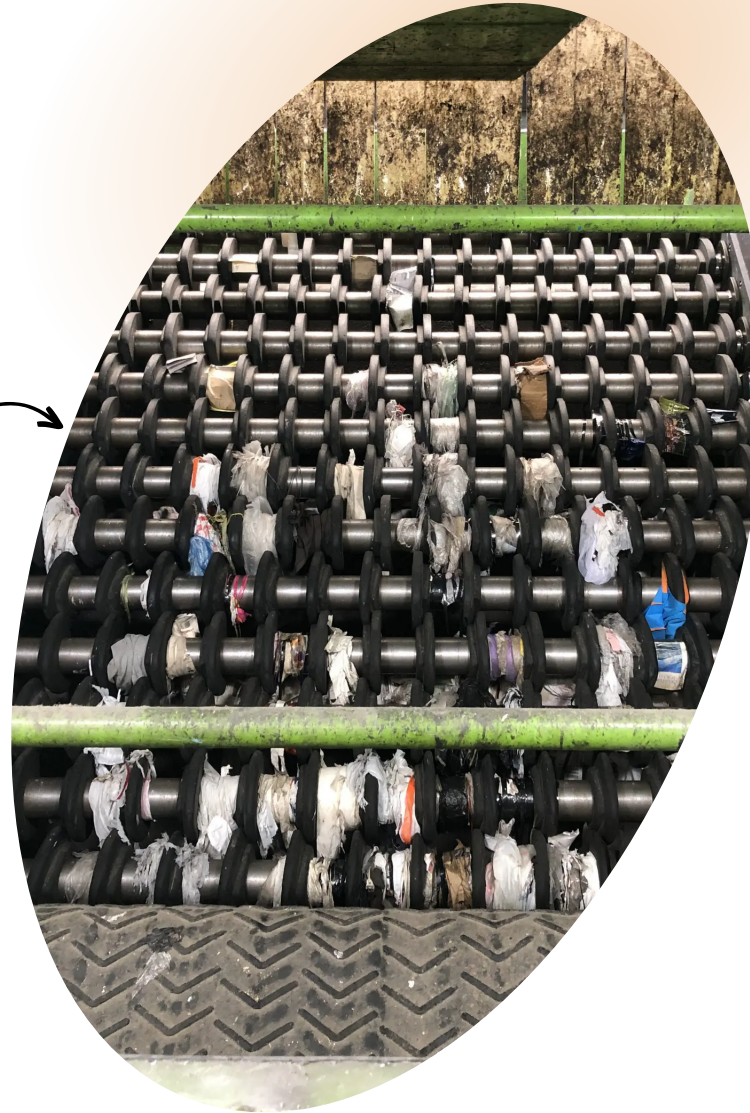
Friendly Reminders

Plastic bags go in the garbage 🗑️

WHY?

- 1 Plastic bags jam the machines at the RethinkWaste recycling facility
- 2 Facility workers have to go in and manually cut the plastic bags out
- 3 Jams slow down our process, as we receive 540,000 pounds of recyclable material every day

Tip: Reuse plastic bags when you can! If not, some retail stores take back plastic bags. Find more information at RethinkWaste.org/PlasticBags



Jammed machine at the RethinkWaste facility

Keep the lids of your carts and bins **CLOSED** so the insides don't get wet

Once paper goods get wet, it lowers its quality and lessens the chance of getting recycled

