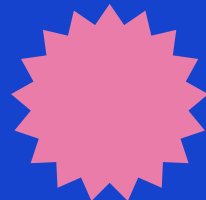


# SAVE ENERGY



## BayREN Rebate program - Share with your landlord!

Bay Area Regional Energy Network (BayREN) is offering free technical assistance and energy retrofit rebates to owners of residential buildings with over 5 units!

If you are a tenant of a residential building with over 5 units, please make the property owner aware of this exciting opportunity.

Owners are eligible for rebates of \$500 per unit. Certain energy retrofits are eligible for additional rebates, for example:

- New in-unit heat pump water heaters - \$1,500 per unit upgraded
- New In-unit electric cooking - \$750 per apartment upgraded
- Panel upgrades - \$1,000 per unit for subpanels or \$5,000 for common areas

Please visit <http://www.bayren.org/eligibility> to enroll today.

Contact 855-213-2832 or [multifamily@BayREN.org](mailto:multifamily@BayREN.org) with any questions.



Local Governments Empowering Our Communities



# Multi-Family Property Manager Guide

## Available Tools/Resources — Offered at No Additional Charge

### Recycling Buddy Bags



Recyclable items must be loose in the recycle cart/bin. Buddy Bags make it convenient for your residents to store recyclables until they are ready to empty them into the centralized blue Recycle cart/bin.

### Internal Containers



Encourage recycling and composting throughout your property by placing internal containers in central locations, such as a mail room, laundry room, and/or clubhouse. Internal containers are subject to availability and provided in limited quantities.

### Kitchen Pails



Kitchen pails are a convenient way to collect food scraps, soiled paper products, and other compostable materials before tossing them into the green Compost cart/bin.

### Poster/Dock Signs

Utilize picture-heavy signage with minimal text to get the proper sorting message across more effectively. Place signage in strategic areas so residents are able to clearly see the message.



### Battery & Cell Phone Bucket(s)



Battery and cell phone collection buckets provide an easy way to dispose of these items safely. Collection buckets can be placed in a common area such as a lobby, multi-use room, mail room, or clubhouse. When you're ready to schedule a collection, contact Recology who will collect the bucket from a mutually agreed upon location.

### Holiday Tree Collection



Trees can be collected in piles or in a drop box for no additional charge between January 2—January 31. Please call Recology to arrange for collection of holiday trees.

## Bulky Item Collection (BIC) — Must Be Coordinated by Property Manager



Two free BICs are allowed per calendar year per multi-family complex for large items such as electronics, appliances, mattresses, and furniture. If you anticipate a large amount of materials, you can schedule your two free BICs for the same day. Recology will schedule an on-site assessment to determine the location and size of container(s) needed.

Individual bulky item pick-up can be scheduled for a fee. Contact Recology at (650) 595-3900 for pricing and to schedule.

**NON-ACCEPTABLE ITEMS:** hazardous waste (paint, fluorescent lights, auto batteries, etc.), dirt, rock, and concrete.



## Free Drop-off at the Shoreway Public Recycling Center

- Batteries (household, lithium ion and car)
- Electronics (computers, TVs, other consumer electronics)
- Latex & oil-based paint (up to 10 gallons)
- Used motor oil (up to 15 gallons) & oil filters
- Mattresses (up to 5 mattresses, drop off at the Shoreway Transfer Station)

### Please share this information with your tenants.

For information on hours, location, and accepted items, visit [RethinkWaste.org/PRC](http://RethinkWaste.org/PRC)



RethinkWaste is your regional public agency that owns the 16-acre Shoreway Environmental Center in San Carlos and manages our two major contractors: Recology and South Bay Recycling.  
**(650) 802-3500**  
**RethinkWaste.org**



Recology is your collection company for recycle, compost and garbage. If you are interested in any of the services above:  
**(650)595-3900**  
**Recology.com**



For questions about the Shoreway Environmental Center (hours, rates, materials accepted, etc.):  
**(650) 802-8355**  
**SBRcycling.net**