

# 2022 Montara Moss Beach

## SERVICE REMINDERS

### COLLECTION TIMES

All collection containers must be placed **at the street by 5 am** on your service day. We recommend placing containers out the night before as pick-up times may vary. After service, please bring your containers back from the street as they should not sit out longer than 12 hours.

We will not service **ANY** container where the lids do not close completely. We are not responsible for any articles left on or near collection containers.

### EXTRA GARBAGE:

Extra garbage must be bagged and arrangements made with our office in advance for pickup. You may also schedule one of your free collections. See page 8 for more information.

### MISSED COLLECTIONS:

Please report any missed collections to our office by the following business day. We have a 24 hour messaging service so if you call after hours, please leave a detailed message and a Customer Service Representative will address your missed collection the following day, Monday – Friday.

### CHRISTMAS TREE RECYCLING:

Christmas Trees will be collected at the curb/street on your regular greenwaste collection day through **January 31** and should be cut to 4 feet or less in length. Those trees not picked up during the month above should be cut up and put into your green waste container(s). **Please remove all ornaments, tinsel, lights and stands. Flocked trees are ok.**

### 2022 HOLIDAY PICKUP

#### Thanksgiving Day

Regular pickup—have carts out by 5 am



# Quarterly Recycle Days

## Montara, Moss Beach

Farallone View School, 1100 LeConte & Kanoff in Montara

Time: 8:00 am - 12:00 pm

### DATES:

February 5, 2022

May 7, 2022

August 6, 2022

November 5, 2022

For more information call:

650.355.9000 or 650.728.3545

### ITEMS NOT ACCEPTED

Antifreeze & Motor Oil  
Concrete  
Hazardous Waste  
Packing Peanuts  
Paint, Aerosol Cans  
Painted & Pressure Treated Wood  
Pesticides  
Sheetrock  
Tires (large truck or tractors)



### ITEMS ACCEPTED

Appliances (1 per household, refrigerators/freezers no charge)  
Batteries (auto & household)  
Carpet & Carpet padding (1 room only no larger than 12x12)  
Cell Phones, pagers  
Computers, Monitors, Keyboards  
Fluorescent bulbs  
Furniture  
Mattress/Box Spring (1 set only)  
Printers, Cartridges, Cables  
Scrap Metal & Metal Car Parts  
Small Fax & Copy Machines  
Stereos, TVs, VCRs  
Styrofoam (large blocks only)  
Tires (auto, motorcycle, pick-up) - limit of 4  
Untreated wood



# Single Stream Recycling

The Single-Stream Recycling Program allows you to put all your recyclables into the same rolling cart and will be serviced **every week!** Please place your cart curbside/at the street by **5 am** on your regular service day for collection.



### UNACCEPTABLE ITEMS:

Animal Waste  
Bubble wrap  
Ceramics  
Clothing  
Compostable bags  
Diapers  
Food contaminated packaging  
Furniture  
Garden hoses  
Packing peanuts  
Paper towels, napkins, facial tissue  
Photographs/Negatives  
Plastic Bags  
PVC pipes  
Styrofoam  
Unmarked plastics (plastics without the #1-#7 recycling symbol)

### ACCEPTABLE ITEMS:

Aluminum  
(i.e. soda cans, CLEAN aluminum foil)  
Aseptic Containers  
(juice and soup boxes)  
Glass Bottles & Jars  
Mixed Paper (colored, computer, magazines)  
Plastics  
(containers #1-7)

For recycling and reuse options of the materials listed above, please visit San Mateo County RecycleWorks at [www.RecycleWorks.org](http://www.RecycleWorks.org).

# Recyclopedia

The following is an alphabetical listing of items that can be disposed or recycled in or around your area. Items shown in **BOLD** are picked up curbside. If you have any questions, please call **Recology of the Coast** at **650.355.9000** or visit **[www.recologyofthecoast.com](http://www.recologyofthecoast.com)**.

**ALUMINUM FOIL** - Recycle cart (completely clean)

**ANTIFREEZE**<sup>1</sup> - Recycling Yard

**APPLIANCES**<sup>2</sup> - Recycling Yard

**BATTERIES**; auto, cell phone – Recycling Yard

**BATTERIES**; household – in sealed clear plastic bag on top of recycling cart

**BICYCLES** - Recycling Yard

**BOOKS** - hardbound and softbound books Discovery Book kiosk outside recycling yard

**BRANCHES** - Organics cart (cut to less than 3 feet in length and less than 3 inches in diameter)

**BRASS** - Recycling Yard

**BUILDING MATERIALS** - See Debris Box Information on page 4

**CANS** - Recycle cart (aluminum, bimetal, tin)

**CARDBOARD** - Extra cardboard - Recycling Yard

**CHRISTMAS TREES** - picked up curbside through January 31st, cut to 4ft in length or less.

**COMPOSTABLE BAGS** - green cart only

**COMPUTER PAPER** - Recycle cart

**CONCRETE** - See Debris Box

**COPPER PIPE AND WIRE** - Recycling Yard

**DIRT** – Call the office for disposal options, 650-355-9000

**ELECTRONIC WASTE** - Recycling Yard (Zip Drives, Speakers, Monitors, Keyboards, Printers, Fax Machines, Copy Machines, Power Cables, TVs, Typewriters, VCRs, Stereo Equipment, Cell Phones, Pagers)

**FLOWER POTS** - Recycle cart - plastic only

**FLUORESCENT/CFL BULBS** - Recycling Yard

**FOOD SCRAPS** – Garbage cart.

**FURNITURE** - Recycling Yard, On-Call Collection, Donate

**GARDEN HOSE** – Garbage cart

**GLASS CONTAINERS** - Recycle cart

**GREENWASTE** - Organics cart.

**HOUSEHOLD HAZARDOUS WASTE (HHW)** – call The County of San Mateo at 650-363-4718 to schedule an appointment

**JUNK MAIL** - Recycle cart

**LUMBER** - see Wood

**MAGAZINES** - Recycle cart

**MATTRESSES** – Standard mattress/box spring only at the Recycling Yard. Futons, posturepedic, memory foam, etc are NOT accepted.

**MOTOR OIL**<sup>1</sup> - Recycling Yard

**NEWSPAPER** - Recycle cart

**PAINT**; latex and oil base<sup>1</sup> – See Household Hazardous Waste

**PAPER** - Recycle cart (colored, computer, mixed)

**PAPER BAGS** - Recycle or Organics cart

**PHONE BOOKS** - Recycle cart

**PLASTIC BASKETS** - Recycle cart

**PLASTIC CONTAINERS** - (#1 - #7) Recycle cart or the Recycling Yard

**PLASTIC BAGS** – Garbage cart only

**PROPANE TANKS** – call The County of San Mateo at 650-363-4718 to schedule an appointment

**SATELLITE DISHES** - Recycling Yard or TV service provider

**SHARPS** - Recycling Yard.

**SHEETROCK/DRYWALL** - See Debris Box information on page 4

**SOILED PAPER PRODUCTS** - Organics cart

**STYROFOAM PEANUTS** – Garbage cart (bagged).

**STYROFOAM BLOCKS** – Recycling Yard

**TIRES**<sup>2</sup> - Recycling Yard

**TREE LIMBS, CUTTINGS** - Organics cart (cut to less than 3 feet in length and less than 3 inches in diameter)

**VITAMINS/MEDICATIONS** – Pacifica Police Department: 2075 Coast Highway confidential drop-off container

**WOOD** – Recycling Yard - Untreated, unpainted, unstained, lumber ONLY - NO pressed board, pressure treated or plywood accepted. NO tree branches, stumps, etc.

**YARD WASTE** - Organics Cart.

<sup>1</sup> A five-gallon limit per household, per month may apply.

<sup>2</sup> A fee may be charged for items such as: Refrigerators, tires, etc.

# RECYCLE YARD

The **Recology of the Coast Recycle Yard** is located at 1046 Palmetto Ave, in Pacifica. Hours of operation is 8 am to 2 pm on Tuesdays and Thursdays, and 7 am to 12 pm on Saturdays.

## Items accepted at the Recycling Yard are:

- Antifreeze<sup>1</sup>
- Appliances<sup>2</sup>
- Car and Household Batteries
- Cellular Phones
- Computers<sup>2</sup>
- Televisions<sup>2</sup>
- Cooking Oil, used
- Fluorescent tubes and bulbs
- Furniture
- Latex (water-based) paint<sup>1</sup>
- Motor Oil and Filters<sup>1</sup>
- Scrap Metal
- Sharps (must be inside a biohazard container)
- Small Household Appliances (like microwaves, radios, space heaters)
- Styrofoam, packing blocks only
- Tires (auto and pick-up truck only)<sup>2</sup>
- Wood, unpainted & untreated

<sup>1</sup> A five-gallon limit per household, per month may apply.

<sup>2</sup> A fee may be charged for items such as: Refrigerators, computers, tires, etc.

For more information, please call our Customer Service Department at **650.355.9000** or visit us online at **www.recology.com**. Items accepted at discretion of Recycling lot attendant.

## The Recycle Yard is closed on the following holidays:

- New Year's Day
- Martin Luther King Day
- President's Day
- Saturday after Christmas Day and New Year's Day
- Memorial Day
- 4th of July
- Labor Day
- Weekend of the Fog Festival
- Thanksgiving Day
- Christmas Day

## Household Hazardous Waste (HHW) Information

The County of San Mateo offers free disposal of certain HHWs:

- Art and hobby supplies
- Furniture and metal polishes
- Household cleaners
- Oil and latex based paint
- Paint thinner
- Pesticides
- Pool chemicals
- Photographic chemicals



To schedule an appointment call the automated appointment line at **650.363.4718** or visit their website <http://smchealth.org/hhw/>

## RECYCLING THEFT:

It is illegal to remove recycling materials once they have been placed inside of a recycling cart. If you are a witness to this crime, please report it by calling the North Coast County Substation Business Line at: **650.573.2801**.

## Pharmaceutical & Sharps Disposal

Vitamins & Medications or Sharps (medical devices for self-injection or blood tests):

**North Coast Sub-Station: 500 California Ave, Moss Beach or Half Moon Bay Police Station: 537 Kelly St.**

For more information about Sharps and Pharmaceutical disposal visit <http://smchealth.org/hhw>



## GARBAGE PICKUP SERVICE REMINDERS:

Please place garbage containers curbside by 5 am on your pickup day for service.

### UNACCEPTABLE ITEMS:

Ashes  
Dirt/Rocks/Bricks/Concrete  
Pesticides

Construction Debris  
E-Waste  
Paint

Hazardous Waste  
Motor oil

## Compost Giveaways

**March 5 and September 10, 2022**

8 am – 12 pm at 1046 Palmetto Avenue, Pacifica

Each residence may bring 2 – 30 gallon cans to collect compost.

Please note: Only cans will be filled, no boxes or bags.

## Shredding Events

**June 4 and December 5, 2022**

8 am – 12 pm at 1046 Palmetto Avenue, Pacifica

Each residence may bring up to six (6) banker boxes of paper for free confidential shredding per event.



# Food waste and green material collection starts weekly in January 2022

Senate Bill 1383 (SB1383) is a law enacted by the State of California that builds upon the state's leading commitments to reduce greenhouse gas emissions and air pollution statewide. SB1383 requires all businesses and residents to divert organic materials (**including food scraps, uncoated soiled paper, and yard waste**) from the landfill.

Starting January 1st, 2022, regulations take effect. This law also requires the state to increase edible food recovery by 20% by 2025.

Recology of the Coast will begin our composting program on the **week of January 3, 2022**. Your 96-gallon green cart will be picked up weekly with your garbage and recycling carts. All three carts should be placed curbside no later than **5 am on pickup day**.

The additional thirty-gallon green cart will no longer be accepted starting January 2022.

## Compost



**FOOD SCRAPS**



**UNCOATED SOILED PAPER**



**YARD WASTE**

## UNACCEPTED ITEMS



**RECYCLABLES**



**SINGLE-USE PLASTIC**



**LIQUIDS AND GREASE**



**PPE**

## Garbage Collection Services

Your monthly rate includes the garbage, recycle and green waste services but your monthly fee is determined by the size of your garbage container.

### Recology of the Coast

**Office Hours: Monday – Friday, 7:30 am – 4:30 pm**

**Payment options:** \_\_\_\_\_

On-line at **Recology.com**

Self service by phone: **650.451.0185**

In person or by mail: **2305 Palmetto Avenue, Pacifica**

Phone assisted: **650.355.9000**

**ALL BULKY ITEM PICKUPS  
MUST BE SCHEDULED NO LATER THAN DECEMBER 10, 2021**

### Bulky Goods Pick-Up Program

*Items accepted at the discretion of the driver.*

Residents in single-family, duplexes and triplexes are entitled to 4 curbside bulky items per calendar year (Refrigerators/Freezers and Mattresses/Box Springs are no longer accepted for curbside pickup but may be taken to the Quarterly Recycling Day drop off (free or charge) or to the Recycling Yard (charges apply)

Each collection is limited to either 5-32 gallon bags OR 1 large item, no longer than 6 feet and no heavier than 100 pounds. If you wish to use more than 1 collection at the same time you may request service when ordered.

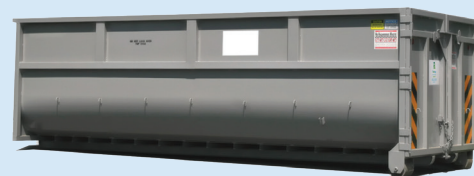
This service is offered on any of your pick-up days. Please notify our office at least 24 hours in advance of desired pick-up day. Bulky Pickups are non-transferable and cannot be carried over from year to year. Item(s) must be curbside/at the street by 5am for pick up. Driver will NOT remove item(s) from inside your home.

For more information or to schedule collections, please call **650.355.9000** or visit **www.recology.com**.

### Life Line Low Income Requirements

If you are on the PG&E Care program, please contact Customer Service at 650.355.9000 to sign up for low income rate. Rate applies to 30 gallon cart only.

If you meet the requirements, please provide a copy of your PG&E bill showing enrollment in the CARE Program to Customer Service and call **650.355.9000** or visit **www.recology.com**.



### Debris Box Service

**Recology of the Coast is the exclusive debris box hauler for the Granada and Montara Sanitary Districts.** Debris boxes delivered Monday-Friday only. Payment due at time of order. Construction and Demolition (C & D) Recycling Ordinance documentation is available and should be requested at time of order. Recology of the Coast is not liable for damage done to your driveway/property from use of debris box. Owner/Renter/Occupant accepts responsibility should damage occur.