

# Recycle

No food, liquid, Styrofoam® or loose plastic bags!

### Paper & Cardboard

### Plastic Containers

### Glass Bottles & Jars

### Metal

Recycle	Garbage
Clean!	Dirty!

**ALL ITEMS MUST BE CLEAN & DRY**

PRSRT STD  
 US POSTAGE  
 PAID  
 SEATTLE, WA  
 PERMIT NO.  
 1046

Questions about what goes where? Visit [seattle.gov/wheredoesitgo](http://seattle.gov/wheredoesitgo)

# Food & Compost

No plastic, glass, or metal!

### Food-Soiled Paper

### Food Scraps

### Yard Debris

**APPROVED COMPOSTABLE PACKAGING ONLY**

[recology.com/seattle](http://recology.com/seattle)



117 S Main St, Suite 300, Seattle, WA 98104

## HELPING YOUR BUSINESS

# WASTE ZERO

2018

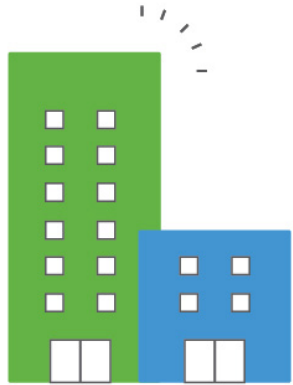
**CUSTOMER SERVICE**  
206.250.7500

**WEBSITE**  
[recology.com/seattle](http://recology.com/seattle)

**PAY BY PHONE**  
206.254.9950

**ILLEGAL DUMPING ON PUBLIC PROPERTY**  
206.684.7587





Contact us today!

educationoutreach@recology.com

Your business can achieve significant savings by recycling and composting with Recology CleanScapes. We offer:

- ✓ **FREE on-site waste consultations**
- ✓ **FREE educational resources, trainings & presentations**
- ✓ **Customized recycling solutions**

## Seattle Public Utilities EnviroStars Green Business Program

The **EnviroStars Program** offers free tools and assistance to help Seattle area businesses conserve resources and prevent pollution.

Learn how your business can reduce cost, gain a competitive edge, and contribute to a clean and healthy community.

Visit [seattle.gov/util/envirostars](http://seattle.gov/util/envirostars).

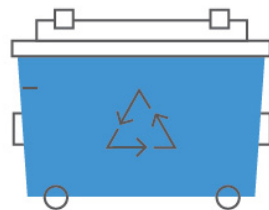


## Recycle with Recology!

Did you know, recycling can help save you money? We offer a range of container sizes to meet your needs!

### DUMPSTER SIZES

1 - 8 yard<sup>3</sup>



### CART SIZES

32 - 96-gallons



**Want to learn more about Recology's recycling services? Contact us today!**

[seattle@recology.com](mailto:seattle@recology.com) | 206.250.7500

## StreetScapes Services

**Exterior custodial solutions for your business**

- ✓ **On-call cleanups**
- ✓ **Pressure washing**
- ✓ **Graffiti removal**
- ✓ **Biohazard cleanup**



**206.250.7500**

[recology.com/seattle](http://recology.com/seattle)

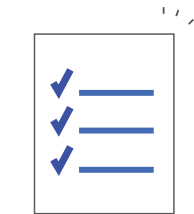
## Did you know...

### FOOD WASTE REQUIREMENT

Food waste is **NOT** allowed in garbage containers in the City of Seattle.

### RECYCLING REQUIREMENT

Recycleables are **NOT** allowed in garbage containers in the City of Seattle.



### HAZARDOUS WASTE

Electronics, fluorescent light bulbs and tubes, and other hazardous items are **NOT** allowed in the garbage. Please use safe disposal options:

[hazwastehelp.org](http://hazwastehelp.org)      206.263.8899



### CONSTRUCTION & DEMOLITION REQUIREMENTS

Construction and demolition materials are **NOT** allowed in the garbage.

Questions about construction & demo disposal? Call 206.224.9533.



### FOOD PACKAGING REQUIREMENTS COMING SOON!

In July 2018, plastic utensils and plastic straws will be prohibited from use. Instead, food businesses will be required to use compostable options. Visit [seattle.gov/util/BusinessComposting](http://seattle.gov/util/BusinessComposting) to learn more.

