



Fall 2016

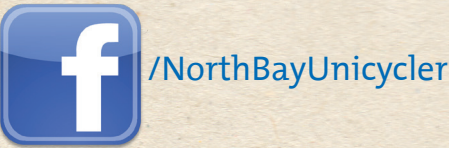
unicycler.com

Contact Us:  
Rohnert Park Disposal  
(707) 586-2283

Chat Live Now!

Online Chat at:  
unicycler.com

Phone Hours  
Monday - Friday 7am-6pm  
Saturday - Sunday 7am-3pm



No need to stay on hold any longer. Simply go to [unicycler.com](http://unicycler.com) and chat online with a friendly customer service agent now!

Upcoming Events:  
Rohnert Park Fall Curbside Clean-up  
October 17th-October 21st

Christmas Tree Pickup  
December 26th-January 14th

Curbside Collection:  
January 9th -January 20th  
Place whole trees at the curb on your regularly scheduled collection day.  
Drop-off Location:  
December 26th - January 14th  
Daily 9am-4pm  
Rohnert Park Community Center  
5401 Snyder Ln.

General Information:  
-General Holiday Collection: Christmas and New Year's fall on a Sunday so there will be no change in service.  
-Green Waste Cart Collection: Trees are accepted in Green Waste Carts at ANY TIME. Trees MUST be cut to fit inside cart with the lids closed. Flocked trees are NOT accepted.  
-All lights, tinsel, ornaments and stands MUST be removed prior to any collection  
-Flocked trees are considered trash and must either fit in the trash cart or be taken to a transfer station. FLOCKED trees will NOT be collected by any curbside, green cart or drop-off program.



# GREEN WASTE JUST GOT GREENER

Your residential green can is perfect for yard trimmings AND food scraps.

## Facts about food waste disposal in Sonoma County:

- Waste characterization studies show that 36% of residential garbage is organics (vegetative & non-vegetative) – a resource that could be re-used instead of landfilled
- Sending organics to the landfill increases dirty landfill gas, wastes potential resources, reduces diversion and potentially increases greenhouse gas emissions
- Residential customers are now able to add food scraps to the green bin
- Collect items for the green can in a biodegradable paper bag or a convenient kitchen countertop bin (available for purchase, \$6 from The Ratto Group)
- Commercial customers can enroll in the company's commercial food waste program, and businesses generating more than 8 cubic yards of food waste are required to enroll and divert by law
- Without an available local diversion option, residential and commercial food waste is hauled out of Sonoma County and recovered through composting

### What's compostable

#### Qué se puede compostar

Fruit, vegetables & peelings  
Frutas, vegetales & sus peladuras

Pasta, rice, bread, eggshells, tea bags, coffee grounds & filters  
Pasta, arroz, pan, cascarones de huevo, bolitas de té, granos de café & filtros

Meat, cheese, bones & seafood including shells  
Carne, queso, huesos y las mariscos incluyendo las conchas/cascarones

Food leftovers (packaging removed)  
Restos de comida (remueve el empaque)

Non-coated paper products such as paper plates & food-soiled napkins (small amounts okay)  
Los productos de papel no recubiertos como platos de papel y servilletas manchadas con comida (en pequeñas cantidades)

Leaves, weeds, grass, landscape prunings (maximum 4 inches in diameter by 2 feet long) & wood ashes (cold)  
Hojas, hierbas, pajas podadoras (con un máximo de 4 pulgadas de diámetro por 2 y Cientos de metros (fijas) paja de largo)

Keep your cart clean by wrapping your scraps in a brown paper bag or newspaper.  
Mantenga su contenedor limpio envolviendo las desperdicios de comida en una bolsa de papel o en papel periódico.

### No trash or recycling

#### No basura o reciclaje

No plastic bags including compostable plastics  
No bolsas de plástico incluyendo plásticos biodegradables

No garbage or recycling  
No basura o reciclaje

No liquid waste, oil or grease  
No residuos líquidos, aceite o grasa

No hazardous waste  
No residuos peligrosos

No paper towels used for personal hygiene or cleaning  
No toallas de papel utilizadas para la higiene personal o para limpieza

No Styrofoam™  
No espuma de poliestireno

No poison oak, cactus, palm fronds, pampas grass, bamboo, dirt, rocks, sod or tree stumps  
No brezo, cardo, palmas, zacate caña de azar, bambú, tierra, pedras, tallos de paja o troncos de árbol

No dimensional lumber or treated wood  
No madera dimensionada o madera tratada

No waste paper products  
No papeles productos de papel sucio

North Bay Corporation/Redwood Empire Disposal  
800-243-0291 [www.unicycler.com](http://www.unicycler.com)

SONOMA COUNTY  
Waste Management Agency

Eco-Desk 565-3375  
[www.recyclenow.org](http://www.recyclenow.org)

For a full, printable version please visit [recyclenow.org](http://recyclenow.org)

# Yard Waste Guidelines

- Place all grass cuttings, leaves & weeds, tree & shrubbery trimmings, berry bushes and other yard & garden waste inside your green rolling cart, also referred to as your yard waste cart. Branches under 4 inches in diameter and less than 2 feet long are accepted.
- Also accepted in the yard waste carts, are all food scraps, such as fruits and vegetables (including pits and nuts), coffee grounds with filters, tea bags, kitchen prep scraps, bread, grains, pasta, baked goods, eggs, eggshells and non-coated paper products such as paper plates, shredded paper and napkins.
- Place your yard waste cart at the curb allowing at least three feet of space between containers.
- All green waste must be in the container. Loose material will not be collected.
- Do not put yard waste in plastic bags.
- Please do not put garbage in your yard waste cart. Contamination can lead to higher costs and higher prices in garbage service.

# Keep Your Green Clean!

Keep your cart clean by wrapping your food scraps in a brown paper bag or newspaper. The following materials are banned from your yard waste cart.

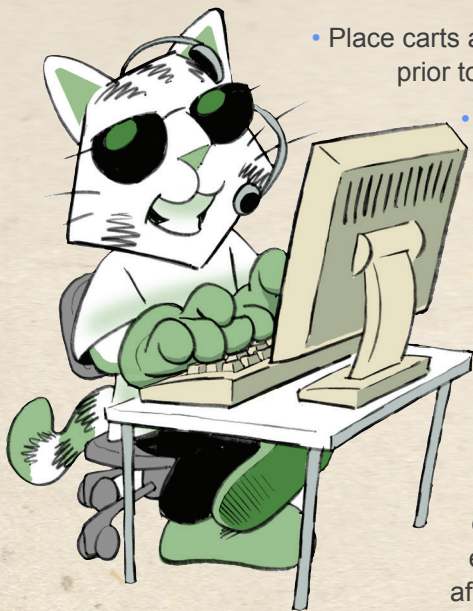
- garbage • sod or dirt • rock • gravel or concrete • lumber • playground bark • plastic bags • nursery pots or plastic • pet waste • palm fronds • processed or treated wood products • bamboo • cups, packaging & straws • liquid waste & ice • plastics • take-out containers • compostable plastics (even bio-bags) • synthetic corks • waxed cardboard • poison oak • Sudden Oak Death infested material • BBQ ashes • tree stumps



# Rohnert Park Recycling News

## Guidelines & Reminders from Customer Service

To help us provide the best service to you, please observe the following:



- Place carts at the road edge the night prior to your service day.
  - Please leave 3 feet between garbage, recycling & yard waste carts.
  - Place garbage loosely in your cart. Carts that are overstuffed or have material jammed into them may not empty completely.
  - Please remove your containers from the road edge as soon as possible after they have been serviced as is practical.
- Be sure all items are contained inside your carts. Carts that have items sticking out of them or have material piled on top may not be emptied or may receive additional charges.
  - You may opt to set out recycle and yard waste carts only when full if you choose.

For everyone's safety and convenience, we request that you pay special attention to the following:

- Do not place carts within three feet of vehicles, mailboxes, fire hydrants, other obstacles or personal property.
- Collection vehicles need 14' overhead clearance. Carts should not be placed in an area with overhangs, trees or other obstacles.
- Please park your car in your driveway the night before your collection day whenever possible. There may be a delay in collection of blocked carts.
- If you have any questions, please call or check out our new on-line chat option at *unicycler.com*.

## Extra Trash

- If you have an overloaded garbage cart or extra bags of garbage piled on top of, or alongside your cart, you may receive an automatic charge for each extra bag or can of garbage. Carts are considered overloaded if the lid will not close.
- If you have extra garbage, call our office at 586-2283 by 2:30 pm the day before your regular collection day to order extra service and avoid confusion when you receive your bill. Do not overstuff your carts as they may not empty completely.

## Bulky Item Pickups

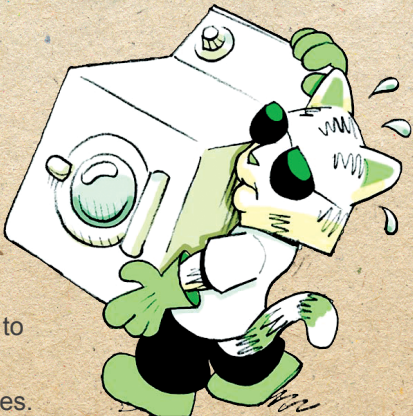
The Ratto Group - *A family of companies* local hauler (Rohnert Park Disposal) offers Bulky Item Pick up for items that are too large for your cart.

Items such as mattresses, couches, and large furniture items can be picked up for a fee for single-family residential customers. Call Rohnert Park Disposal at 586-2283 to schedule a pick up.

We make any attempt to reduce, reuse and recycle your bulky items and keep them out of the landfill. Help us out by trying to donate your item before disposing of it.

### Please Remember:

- We are unable to pick up hazardous waste. Call the HHW hotline at 795-2025 or visit *unicycler.com* for more information.
  - Please direct reusable items to thrift or second hand stores.
- \*Certain items have pick-up fees. Please call or chat online at *unicycler.com* for details.



Dear Unicycler,

The other day I saw one of your trucks pick up the trash and then dump the green waste into the same truck. I work really hard to separate my recycling and green waste from the trash. What gives?

### Diligent Debris Divider

Dear Diligent Debris Divider,

What you saw was one of our split-body collection trucks! Even though it looks like the materials were being mixed together because they were dumped into the same hole on top of the truck, there are actually two compartments inside that keep each material completely separate. So rest assured, the materials you work so diligently to keep separate are not being mixed together. Just like you, we want to keep the recycling and green waste as clean and contamination-free as possible.



The split-body collection trucks are actually super eco-friendly. Because they're collecting two materials at one time, it decreases the number of trips in your neighborhood by one-third, which also decreases fuel use and reduces wear and tear on the streets. These trucks also have reduced emissions, exceeding state standards with Ultra-Low Sulfur Diesel Fuel.

So the next time you see two materials go into the same truck, just remember that it's our split-body collection vehicles hard at work!

### Unicycler

**Have a recycling or environmental question? Email us at [greenteam@unicycler.com](mailto:greenteam@unicycler.com). Or, like us on Facebook and post your questions there.**

## Rohnert Park Curbside Cleanup October 17th - October 21st

Rohnert Park residents may place extra garbage (contained in bags or boxes) at the curb for collection on their regular collection day during this week. Only Rohnert Park residential customers and multi-family complexes may participate in the cleanup. Multifamily complexes must request cleanup service by scheduling service no later than Friday October 14th. Businesses and property managers may not participate. Call Rohnert Park Disposal at 586-2283 to schedule and for full descriptions of what is acceptable to be removed. Residents are limited to two cubic yards of material at the curb--equivalent of 14 bags, boxes or bins or one bulky item plus seven bags or boxes or 2 bulky items.

### Bulky Items:

Large furniture requires an appointment. There is a \$20 charge for mattresses (box springs included). Payment is due at time of pickup. Call Rohnert Park Disposal 586-2283 before Friday, October 14, 2016 for an appointment.

### Yard Waste:

Recycle yardwaste in your green organics cart. It can also be taken to the Central Landfill and composted for a fee. Yardwaste should not be discarded in the garbage.

### Prohibited Items:

The following items are not accepted. They will be tagged and left at the curb.

- Dirt, rocks, concrete, tires, stumps.
- Pressure treated or chemically treated wood/lumber.
- Lawnmowers, propane tanks, batteries
- Hazardous waste such as paint, motor oil, chemicals, cleaners, pesticides, herbicides, & thinners

## Got Cooking Oil?

Plan on cooking this holiday season? Not sure what to do with leftover oil and grease? Fortunately, there is a solution. Several Sonoma County restaurants accept clean, liquid vegetable oil that is mostly free of any solids, meat scraps or water. Yokayo Biofuels, a CDFA-licensed grease collection center based in Ukiah, collects used vegetable oil and processes it into biodiesel. Visit [recyclenow.org](http://recyclenow.org) and see the Recycling Topics Database Search and look under "grease/food service oils" for additional Sonoma County locations that accept clear cooking oil. Or call 565-DESK for more information.

The following locations accept up to 10 gallons of clean vegetable oil that is free of any solids or water. Please call for hours and delivery instructions.

#### Betty's English Fish n' Chips

4046 Sonoma Hwy Santa Rosa, (707) 539-0899

#### Coco's Bakery Restaurant

1501 Farmers Ln. Santa Rosa, (707) 545-2626

#### Big John's Market

1345 Healdsburg Ave. Healdsburg, (707) 433-7151

#### Puerto Vallarta

3333 Cleveland Ave. Santa Rosa, (707) 575-4374

#### Black Bear Diner

201 W. Napa St. # 34 Sonoma, (707) 935-6800

#### Willowbrook Ale House

3600 Petaluma Blvd N. Petaluma, (707) 775-4232



✂ Cut Out This Handy Recycle Guide ✂

# ACCEPTED FOR RECYCLING ONLY

## ACEPTADO PARA RECICLAR SOLAMENTE



✓ **Metal & Aluminum Cans**  
Latas de Metal y Aluminio



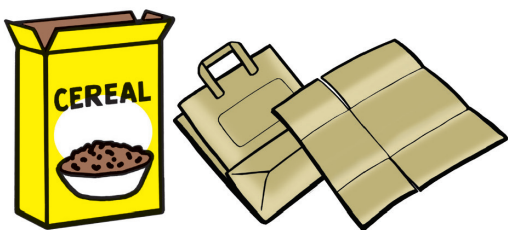
✓ **Glass Bottles & Jars**  
Jarras y Botellas de Vidrio



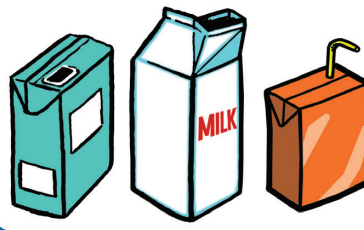
✓ **Plastic Bottles (with lid)**  
Botellas de Plástico (con Tapa)



✓ **Empty Household Plastic Containers & Rigid Plastic Items (No Clamshells)**  
Recipientes Para el Hogar de Plástico Vacíos Así Como los Artículos de Plástico Rígido (No Envases Para Empaque de Poliester Tipo Almeja)



✓ **Paper (No Shredded Paper), Paper Bags, Cereal Boxes, Cardboard (Flattened)**  
Papel (No Papel Picado), Bolsas del Papel, Cajas de Cereales, Carton (Aplaste Todas las Cajas),



✓ **Milk Cartons, Soy/Rice Milk & Juice Boxes**  
Cartones de Leche, de Soya/Arroz y Cajas de Jugo



✓ **Newspaper, Magazines, Office Paper, Catalogs & Telephone Books**  
Periódicos, Revistas, Papel de Oficina, Catálogos y Guías Telefónicas

### Questions? Not sure which bin?

¿Preguntas? ¿No estoy seguro que contenedor?

**unicycler.com**

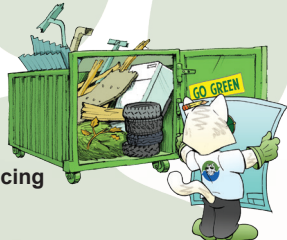
**No Trash**  
**No Basura**

TRGHH12X91015

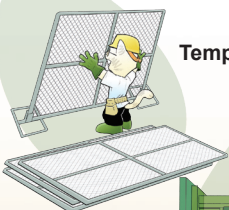
## Unicycler Offers Full Construction Services!

The Unicycler has been busy as of late. We are proud to announce that the Ratto Group is now offering full construction services for all of your disposal needs. By "Construction Services" we mean just about everything a general contractor would need to get a building project going. This also includes disposal of the construction and demolition materials. The majority of this is diverted from the landfill. Exchanges of debris boxes can even be done same day. We now offer a full array of the following:

**Home & Business Cleanouts**



**Temporary Fencing**



**Recycling & Debris Boxes**



**Private Street Sweeping**



## Why is it Important to Recycle Used Motor Oil and Oil Filters?

- Used oil can contain contaminants such as lead, magnesium, copper, zinc, chromium, arsenic, cadmium and chlorinated compounds.
- Don't pour used motor oil down the drain or on the ground. One gallon of used motor oil can pollute one million gallons of drinking water.
- Used motor oil represents more than 40 percent of the oil pollution in our country's waterways.
- Used oil is easy to recycle. It can be re-refined into usable motor oil.
- Recycle your used oil filter. Even after draining, used oil filters contain about 10 ounces of used oil, as well as one pound of reusable steel.
- All the used oil filters sold annually in California could be recycled into 67 million pounds of steel, enough to build three large football stadiums!

Here in Sonoma County we recycle 3,800 gallons of oil per year. Recycling used oil and filters reduces our dependence on foreign oil, saves valuable resources, protects the health of our families, and is the only legal way to dispose of them! You haven't finished changing your oil until you've taken this last important step. There are convenient options for recycling used oil and filters in Sonoma County:

### Curbside recycling service for used motor oil and filters!

Call Customer Service at 586-2283 or 800-243-0291 to request a special container and zip-lock filter bag. Then call our office to request a pickup. Place oil and filter at the curb next to (not in) your recycling cart for pickup on your regular collection day. The driver will leave a replacement container when your full one is collected.

### Drop-off Recycling Locations!

There are many locations in Sonoma County that accept motor oil for recycling. Most also take filters. To find a list of locations nearest you, visit [http://recyclenow.org/toxics/motor\\_oil\\_dropoff.asp](http://recyclenow.org/toxics/motor_oil_dropoff.asp). Or check your Sonoma County Recycling Guide in the AT&T Phone Book. Find it behind the tab under Recycling in the AT&T Yellow Pages.



**Chat Live Now!**

No need to spend your time on the phone. Simply go to [unicycler.com](http://unicycler.com) during business hours and click on the "Chat Now" option on the right side. A Customer Service Agent will be able to handle whatever situation you may have. Or, if it's past business hours, click on "Leave a message" and we'll get back to you within 24 hours.

Give us a call at 707-585-5222 or visit us at [www.unicycler.com](http://www.unicycler.com) for more information





### Rohnert Park Disposal

PO Box 1916  
Santa Rosa, CA 95402

Tel (707) 586-2283  
Tel (800) 243-0291  
Fax (707) 586-5543

## BLUE NEWS

Visit [www.unicycler.com](http://www.unicycler.com) For An Interactive Recycling Guide

## From Global Markets to Neighborhood Backyards: Recycling Has Many Influences

### PLASTICS 101

**Price of oil.** In 2016, the price of oil dropped to it's lowest per barrel value this century. Plastic is made from oil, so when oil prices are low, it becomes cost-effective to make fresh plastic. When the price of oil is really low, using recycled plastic can actually be more expensive because it has to be sorted and cleaned. The low price of oil has destroyed the recyclables market for plastic.

**Markets for materials.** Plastic bags have become increasingly more expensive to process while facing shrinking markets and high processing costs. Plastic bags not only wreak havoc on facility operations, they are the bottom of the barrel in terms of the plastics market. Their value is so low that it makes no good business sense to put extensive resources into recycling it with costs often outweighing revenue.

**Operation Green Fence.** Historically, China has been one of the largest importers of recyclables from the United States. Over time, the quality of materials (e.g. plastic) decreased as they contained food, trash and other contaminants. An excess of contaminated materials left China responsible for landfilling those non-recyclables, so the country responded by launching "Operation Green Fence." Through aggressive inspection efforts and enforcement, this program tightened the quality controls of what China would accept. Only the cleanest materials are now accepted, putting the responsibility for quality on the exporter. As a result, fewer materials are being exported to China.

### Avoid Plastic Bags

Plastic bags cause many disruptions in the recycling process and may be the worst contaminant in the blue recycling bin. Though the type of plastic (#2 and #4) that's used to make plastic bags is recyclable, throwing them in with other recycling creates problems and increases the likelihood of bags winding up in the landfill. They often get wet and dirty which makes them virtually unrecyclable.



Plastic bags wrap around and jam recycling facility equipment. They contaminate paper bales. When they can't be recycled, they go to landfills



where they often blow away to wind up in our waterways and other natural resources. The best approach for handling plastic bags is to not use any. If you do have some, the best disposal method is to take clean, dry bags to marked recycling bins at the local grocery store during your next shopping trip.

## TOXICS DISPOSAL IN SONOMA COUNTY

### SERVICE OPTIONS FOR RESIDENTS

#### Household Toxics Facility

The Household Toxics Facility is open every week for **free drop-off** of toxics from Sonoma County residents.

**Appointment:** Not required

**Hours:** **Thursday, Friday & Saturday 7:30 am–2:30 pm**

**Location:** **Central Disposal Site (Bldg. 5) 500 Meham Rd., Petaluma**

#### Community Toxics Collections

Every week there is a toxics collection somewhere in Sonoma County. Bring your ID to prove residency.

**Appointment required:** Call **795-2025 option 3** or toll-free **1-877-747-1870**

or email [toxicsdisposal@cleanharbors.com](mailto:toxicsdisposal@cleanharbors.com)

**Hours:** **Tuesdays 4-8 pm**

#### Toxic Rover Pickup Service

Have your toxics picked up at your home. Services are provided on a first-come-first-serve basis.

**Fee:** \$50/pickup (limit 440 pounds). Limited free pickup available for seniors over 80 years of age and housebound residents.

**Appointment required:** Call **795-2025 option 4** or toll-free **1-877-747-1870**

or email [toxicsdisposal@cleanharbors.com](mailto:toxicsdisposal@cleanharbors.com)

**Hours:** **Wednesdays** limited appointments

#### Community Toxics Collections schedule

##### September 2016

6 Oakmont  
13 Santa Rosa, NW  
20 Healdsburg  
27 Sonoma

##### November 2016

1 Guerneville  
8 Windsor  
15 Oakmont  
29 Santa Rosa, NE

##### January 2017

10 Santa Rosa, NW  
17 Sonoma  
24 Cloverdale  
31 Healdsburg

##### October 2016

4 Cloverdale  
11 Larkfield  
18 Petaluma  
25 Santa Rosa, SE

##### December 2016

6 Sebastopol  
13 Kenwood

##### February 2017

7 Rohnert Park  
14 Monte Rio  
21 Oakmont  
28 Rincon Valley

**Locations of Community Toxics Collections will be provided when you schedule your appointment.** Call at least 24 hours prior to the collection event. **For a complete schedule, visit [www.recyclenow.org](http://www.recyclenow.org)**

**Transportation & packing:** State transportation laws limit each vehicle to a maximum of 15 gallons of liquid (with a maximum of 5 gallons per container) or 125 pounds of solid material • Never mix chemicals • Place in sealed containers in the trunk, packed to prevent spills • Syringes/needles must be in a sealed and labeled *approved* container. **Not accepted:** Explosives or ammunition • Radioactive materials • Electronics • Biological wastes (except syringes) • Controlled substances.

### SERVICE OPTIONS FOR BUSINESSES

#### Household Toxics Facility

Located at the Central Disposal Site, the Household Toxics Facility is open for drop-off of hazardous waste from qualified Sonoma County businesses.

**Appointment required:** Call **795-2025 option 2** or toll-free **1-877-747-1870** or email [toxicsdisposal@cleanharbors.com](mailto:toxicsdisposal@cleanharbors.com)

**Forms & fees:** Paperwork required. Download forms at [www.recyclenow.org](http://www.recyclenow.org). \$25 processing fee plus disposal fees based on type and quantity of waste.

**Hours:** **Tuesdays & Wednesdays 7:30 am–2:30 pm**

**Location:** **Central Disposal Site (Bldg. 5) at 500 Meham Rd., Petaluma**

#### Community Toxics Collections

Every week there is a toxics collection somewhere in Sonoma County. Space may be limited for business appointments and is based on availability.

**Appointment required:** Call **795-2025 option 2** or toll-free **1-877-747-1870**

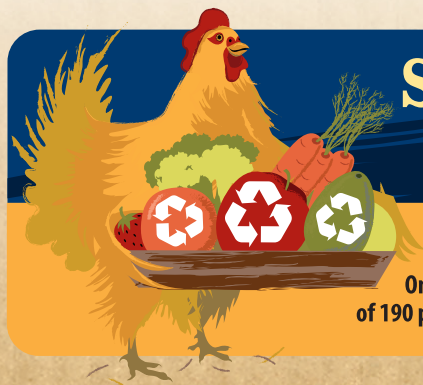
**Forms & fees:** Paperwork required. Download forms at [www.recyclenow.org](http://www.recyclenow.org). \$25 processing fee plus disposal fees based on type and quantity of waste.

**Hours:** **Tuesdays 4-8 pm** for a complete schedule of Community Toxics Collections, visit [www.recyclenow.org](http://www.recyclenow.org)



The Household Hazardous Waste Program is funded by the Sonoma County Waste Management Agency.

[www.recyclenow.org](http://www.recyclenow.org) Eco-Desk 565-3375



## SONOMA COUNTY 2016 RECYCLING GUIDE

Get info to reduce your waste.

Americans waste 25% of the food they purchase.

**Food. Too good to waste.**

On average, each Sonoma County household disposes of 190 pounds of food in the household garbage per year.



565-DESK(3375)

[WWW.RECYCLENOW.ORG](http://WWW.RECYCLENOW.ORG)

