



Recycle

No food, liquid, Styrofoam™ or loose plastic bags

Empty and Clean Recyclables Only

- Place items loose in the recycling cart, not in bags or cartons.
- Place additional recyclables in clearly labeled sturdy bins or boxes next to the recycling cart.

Paper & Cardboard



Plastic



Glass



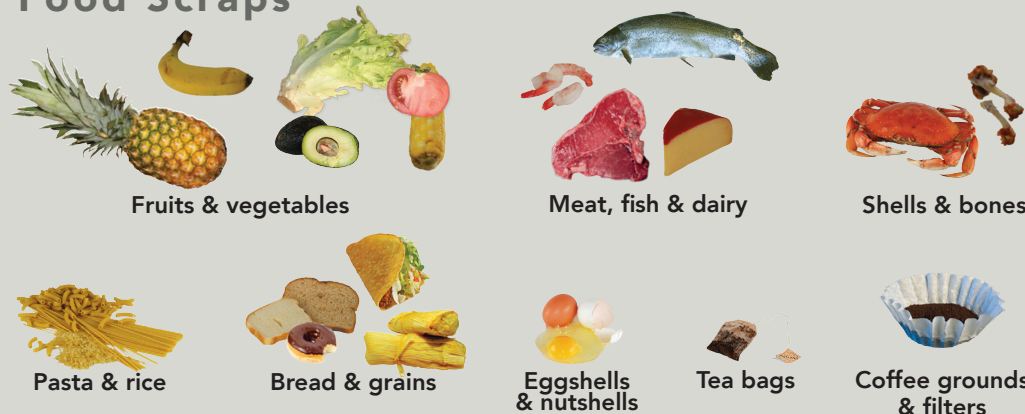
Metal



Food & Yard Waste

No plastic, glass or metal

Food Scraps



Food-Soiled Paper



Yard Waste



Extra Yard Waste

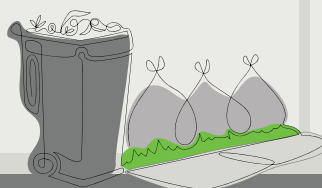
Extra charges apply.

NO food scraps allowed in extra yard waste.

Put extra yard waste in:

- Heavy paper yard bags - **OR** -
- Bundles tied with fiber twine (4' x 2' x 2' limit) - **OR** -
- Rigid cans with handles and lids (32 gal., 60 lb. limit) marked "Yard."

NO yard waste in plastic bags or recycling carts.



Kitchen Tips

Collect food scraps and food-soiled paper in a washable, lidded container.

To keep your container clean:

- Line with used paper towels, newspaper, shredded paper, or compostable bags.
- Sprinkle food scraps with baking soda to limit odors.
- Freeze or refrigerate food scraps in container or compostable bag until collection day.



Garbage

No hazardous waste or prohibited items

Extra Garbage

- There is a charge for garbage that does not fit in your garbage cart with the lid closed.
- Put additional garbage in 32-gallon (or smaller) cans or bags.



Hazardous Materials

Prohibited from all carts



SAFE HAZARDOUS MATERIAL DISPOSAL INFORMATION
206.296.4692 HazWasteHelp.org

Products marked "CAUTION," "WARNING," "DANGER," or "POISON" may require hazardous material disposal.