



2017 El Granada/Princeton/Miramar Residential Greenwaste Calendar & Service Brochure

SERVICE REMINDERS

COLLECTION TIMES:

All collection containers must be placed **at the street by 6 a.m.** on your service day. We recommend placing containers out the night before as pick-up times may vary. After service, please bring your containers back from the street as they should not sit out longer than 24 hours.

We will not service **ANY** container where the lids do not close completely. We are not responsible for any articles left on or near collection containers.

EXTRA GARBAGE:

Extra garbage must be bagged and arrangements made with our office in advance for pickup. **Extra Bag Tags** are available for a fee by calling **Recology of the Coast** at **650-355-9000**. You may also schedule one of your free collections. See page 8 for more information.

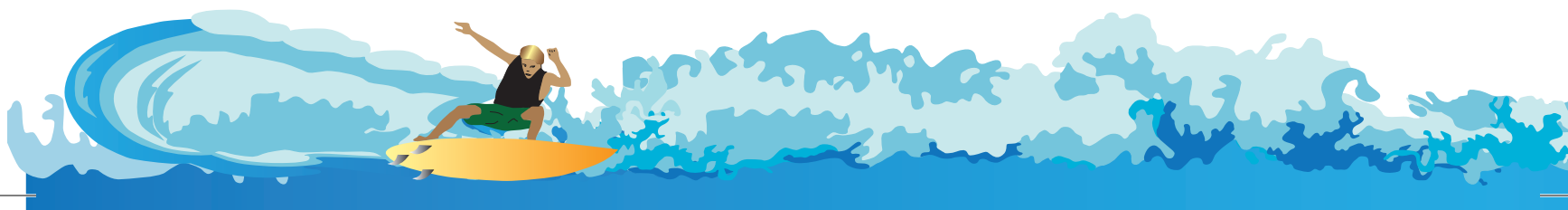


MISSED COLLECTIONS:

Please report any missed collections to our office by the following business day. We have a 24 hour messaging service so if you call after hours, please leave a detailed message and a Customer Service Representative will address your missed collection the following day, Monday – Friday.

CHRISTMAS TREE RECYCLING:

Christmas Trees will be collected at the curb/street on your regular greenwaste collection day through **January 31** and should be cut to 4 feet or less in length. Those trees not picked up during the month above should be cut up and put into your green waste container(s). **Please remove all ornaments, tinsel, lights and stands.** Flocked trees are ok.



Quarterly Recycle Days

Below you will find the Special Item Recycling Drop-Off Days for 2017. Remember, disposal is FREE and only one (1) trip per household, please.

Must present id with district address.

El Granada, Miramar, Princeton

In the Burnham Strip parking lot at the end of Avenue Portola

Time: 9:00am - 1:00pm

DATES:

January 28, 2017

April 22, 2017

July 22, 2017

October 28, 2017

For more information call: 650-355-9000 or 650-726-7093

ITEMS NOT ACCEPTED

Antifreeze & Motor Oil
Concrete
Hazardous Waste
Packing Peanuts
Paint, Aerosol Cans
Painted & Pressure Treated Wood
Pesticides
Sheetrock
Tires (large truck or tractors)

ITEMS ACCEPTED

Appliances (Limit 1 per household)
Batteries (auto & household)
Carpet & Carpet padding (1 room)
Cell Phones, pagers
Computers, Monitors, Keyboards
Fluorescent bulbs
Furniture
Green Waste/Yard waste (limit of 4 - 30 gallon cans)
Mattress/Box Spring (1 set only)
Printers, Cartridges, Cables
Scrap Metal & Metal Car Parts
Small Fax & Copy Machines
Stereos, TVs, VCRs
Styrofoam (large blocks only)
Tires (auto, motorcycle, pick-up) - limit of 4
Unpainted wood



Single Stream Recycling

The Single-Stream Recycling Program allows you to put all your recyclables into the same rolling cart and will be serviced **every week!** Please place your cart curbside/at the street by **6 a.m.** on your regular service day for collection.



UNACCEPTABLE ITEMS:

Animal Waste
Bubble wrap
Ceramics
Clothing
Compostable bags
Diapers
Food contaminated packaging
Furniture
Garden hoses
Packing peanuts
Paper towels, napkins, facial tissue
Photographs/Negatives
Plastic Bags
PVC pipes
Styrofoam
Unmarked plastics (plastics without the #1-#7 recycling symbol)

ACCEPTABLE ITEMS:

Aluminum (i.e. soda cans, CLEAN aluminum foil)
Aseptic Containers (juice and soup boxes)
Cardboard (extra cut down to 3ft x 3ft)
Glass Bottles & Jars
Mixed Paper (colored, computer, magazines)
Plastics (black plastic, bottles, containers #1-7, party cups)

For recycling and reuse options of the materials listed above, please visit San Mateo County RecycleWorks at www.RecycleWorks.org.

Recyclopedia

The following is an alphabetical listing of items that can be disposed or recycled in or around your area. Items shown in **BOLD** are picked up curbside. If you have any questions, please call **Recology of the Coast** at **650-355-9000** or visit **www.recologyofthecoast.com**.

ALUMINUM FOIL - Recycle cart (completely clean)

ANTIFREEZE¹ - Recycling Yard

APPLIANCES² - Recycling Yard

BATTERIES; auto, cell phone – Recycling Yard

BATTERIES; household – in sealed clear plastic bag on top of recycling cart

BICYCLES - Recycling Yard

BRANCHES - green waste container (cut to 3ft in length or less)

BRASS - Recycling Yard

BUILDING MATERIALS - See Debris Box Information on page 8

CANS - Recycle cart (aluminum, tin)

CARDBOARD - Extra cardboard should be flattened and bundled 3ft x 3ft and placed next to your recycling cart

CHRISTMAS TREES - picked up curbside through January 31st, cut to 4ft in length or less. See page 1 for more information.

COMPUTER PAPER - Recycle cart

CONCRETE - See Debris Box Information on page 8

COPPER PIPE AND WIRE - Recycling Yard

ELECTRONIC WASTE² - Recycling Yard (Computers, Zip Drives, Speakers, Monitors, Keyboards, Printers, Fax Machines, Copy Machines, Power Cables, TVs, Typewriters, VCRs, Stereo Equipment, Cell Phones, Pagers)

FLOWER POTS - Recycle cart (Plastic only)

FLUORESCENT BULBS - Recycling Yard

FOOD SCRAPS – garbage container. Food delivery service packaging and containers – garbage cart

FURNITURE - Recycling Yard, Bulky Item Collection, Donate

GLASS CONTAINERS - Recycle cart

GREEN WASTE - green waste container

HOUSEHOLD HAZARDOUS WASTE (HHW) – see HHW information on page 4 or call The County of San Mateo at 650-363-4718 to schedule an appointment

JUNK MAIL - Recycle cart

LUMBER - see Wood

MAGAZINES - Recycle cart

MATTRESSES - Recycling Yard

MOTOR OIL¹ - Recycling Yard

NEWSPAPER - Recycle cart

PAINT; latex¹ - Recycling Yard

PAINT; oil base – See Household Hazardous Waste

PAPER - Recycle cart (colored, computer, mixed)

PAPER BAGS - recycle cart (if clean), garbage container (if dirty)

PHONE BOOKS - Recycle cart

PLANT CONTAINERS (large containers only) Half Moon Bay Nursery
11691 San Mateo Road (Highway 92)
Half Moon Bay

PLASTIC CONTAINERS - (#1 - #7) Recycle cart or the Recycling Yard

PLASTIC BAGS – reuse when possible (i.e. to line garbage cans or picking up animal waste)

PROPANE TANKS – Recycle Yard (empty tank with safety valve) or call The County of San Mateo at 650-363-4718 to schedule an appointment

SATELLITE DISHES - Recycling Yard or TV service provider

SHARPS - Recycling Yard. See page 4 for more details

SHEETROCK/DRYWALL - See Debris Box information on page 8

SOILED PAPER PRODUCTS - garbage container

STYROFOAM BLOCKS, PACKING FORMS - Recycling Yard

TIRES² - Recycling Yard

TREE LIMBS, CUTTINGS - green waste container (cut to 3ft in length or less)

VITAMINS - See Pharmaceutical Disposal on page 4

WOOD – Recycling Yard (natural; untreated, unpainted, unstained) *no plywood or pressure treated wood

YARD WASTE - green waste container

¹ A five-gallon limit per household, per month may apply.

² A fee may be charged for items such as: Refrigerators, computers, tires, etc.

RECYCLE YARD

The **Recology of the Coast Recycle Yard** is located at 1046 Palmetto Ave, in Pacifica. Hours of operation Tuesday, Thursday 8 – 4 and Saturday 8 – 1. Hours of Operation are seasonal. Closed Monday, Wednesday, Sunday and Holidays. Visit our website for days of service: www.recologyofthecoast.com.

Items accepted at the Recycling Yard are:

- Antifreeze¹
- Appliances²
- Car and Household Batteries
- Cellular Phones
- Computers²
- Televisions²
- Cooking Oil, used
- Fluorescent tubes and bulbs
- Furniture
- Latex (water-based) paint¹
- Motor Oil and Filters¹



- Scrap Metal
- Sharps (must be inside a biohazard container)
- Small Household Appliances (like microwaves, radios, space heaters)
- Styrofoam, packing blocks only
- Tires (auto and pick-up truck only)²
- Wood, unpainted & untreated

¹ A five-gallon limit per household, per month may apply.

² A fee may be charged for items such as: Refrigerators, computers, tires, etc.

For more information, please call our Customer Service Department at **650-355-9000** or visit us online at www.recologyofthecoast.com.

The Recycle Yard is closed on the following holidays:

- New Year's Day
- Martin Luther King Day
- President's Day
- Saturday before Christmas Day and New Year's Day
- Memorial Day
- 4th of July
- Labor Day
- Weekend of the Fog Festival
- Thanksgiving Day
- Christmas Day

Household Hazardous Waste (HHW) Information

The County of San Mateo offers free disposal of certain HHWs:

- Art and hobby supplies
- Furniture and metal polishes
- Household cleaners
- Oil and latex based paint
- Paint thinner
- Pesticides
- Pool chemicals
- Photographic chemicals



To schedule an appointment call the automated appointment line at **650-363-4718** or visit their website <http://smchealth.org/hhw/>

RECYCLING THEFT:

It is illegal to remove recycling materials once they have been placed inside of a recycling cart. If you are a witness to this crime, please report it by calling the North Coast County Substation Business Line at: **650-573-2801**.



Pharmaceutical & Sharps Disposal

Vitamins & Medications or Sharps (medical devices for self-injection or blood tests):

North Coast Sub-Station: 500 California Ave, Moss Beach or Half Moon Bay Police Station: 537 Kelly St.

For more information about Sharps and Pharmaceutical disposal visit <http://smchealth.org/hhw>



GARBAGE PICKUP SERVICE REMINDERS:

Please place garbage containers curbside by 6 a.m. on your pickup day for service.

UNACCEPTABLE ITEMS:

Ashes
Dirt/Rocks/Bricks/Concrete
Pesticides

Construction Debris
E-Waste
Paint

Hazardous Waste
Motor oil

Green Waste Service Reminders:

Please place grass clippings, leaves and small branches (cut to less than 3ft in length and less than 3in. in diameter) in your green waste container(s) and place curbside/at the street by **6 a.m.** for service.

UNACCEPTABLE ITEMS

- Animal waste
- Ashes and sod
- Bamboo and palm fronds
- Building materials
- Cat litter
- Compostable bags
- Dirt, rock, and concrete

- Food Waste
- Garbage
- Plastic/biodegradable bags
- Poison oak
- Pumpkins and gourds
- Tree stumps and painted wood
- Sawdust



Green Waste Collection Schedule

Your green waste container(s) are collected every other week on your regular garbage day. To determine if you are on the **YELLOW** or **BLUE** schedule, match the color listed next to your address on page 7 to the Collection Calendar below.

JANUARY 2017

| Sun | Mon | Tue | Wed | Thu | Fri | Sat |
|-----|-----|-----|-----|-----|-----|-----|
| 1 | 2 | 3 | 4 | 5 | 6 | 7 |
| 8 | 9 | 10 | 11 | 12 | 13 | 14 |
| 15 | 16 | 17 | 18 | 19 | 20 | 21 |
| 22 | 23 | 24 | 25 | 26 | 27 | 28 |
| 29 | 30 | 31 | | | | |

FEBRUARY 2017

| Sun | Mon | Tue | Wed | Thu | Fri | Sat |
|-----|-----|-----|-----|-----|-----|-----|
| | | | 1 | 2 | 3 | 4 |
| 5 | 6 | 7 | 8 | 9 | 10 | 11 |
| 12 | 13 | 14 | 15 | 16 | 17 | 18 |
| 19 | 20 | 21 | 22 | 23 | 24 | 25 |
| 26 | 27 | 28 | | | | |

MARCH 2017

| Sun | Mon | Tue | Wed | Thu | Fri | Sat |
|-----|-----|-----|-----|-----|-----|-----|
| | | | 1 | 2 | 3 | 4 |
| 5 | 6 | 7 | 8 | 9 | 10 | 11 |
| 12 | 13 | 14 | 15 | 16 | 17 | 18 |
| 19 | 20 | 21 | 22 | 23 | 24 | 25 |
| 26 | 27 | 28 | 29 | 30 | 31 | |

APRIL 2017

| Sun | Mon | Tue | Wed | Thu | Fri | Sat |
|-----|-----|-----|-----|-----|-----|-----|
| | | | | | | 1 |
| 2 | 3 | 4 | 5 | 6 | 7 | 8 |
| 9 | 10 | 11 | 12 | 13 | 14 | 15 |
| 16 | 17 | 18 | 19 | 20 | 21 | 22 |
| 23 | 24 | 25 | 26 | 27 | 28 | 29 |
| 30 | | | | | | |

MAY 2017

| Sun | Mon | Tue | Wed | Thu | Fri | Sat |
|-----|-----|-----|-----|-----|-----|-----|
| | 1 | 2 | 3 | 4 | 5 | 6 |
| 7 | 8 | 9 | 10 | 11 | 12 | 13 |
| 14 | 15 | 16 | 17 | 18 | 19 | 20 |
| 21 | 22 | 23 | 24 | 25 | 26 | 27 |
| 28 | 29 | 30 | 31 | | | |

JUNE 2017

| Sun | Mon | Tue | Wed | Thu | Fri | Sat |
|-----|-----|-----|-----|-----|-----|-----|
| | | | | 1 | 2 | 3 |
| 4 | 5 | 6 | 7 | 8 | 9 | 10 |
| 11 | 12 | 13 | 14 | 15 | 16 | 17 |
| 18 | 19 | 20 | 21 | 22 | 23 | 24 |
| 25 | 26 | 27 | 28 | 29 | 30 | |

JULY 2017

| Sun | Mon | Tue | Wed | Thu | Fri | Sat |
|-----|-----|-----|-----|-----|-----|-----|
| | | | | | | 1 |
| 2 | 3 | 4 | 5 | 6 | 7 | 8 |
| 9 | 10 | 11 | 12 | 13 | 14 | 15 |
| 16 | 17 | 18 | 19 | 20 | 21 | 22 |
| 23 | 24 | 25 | 26 | 27 | 28 | 29 |
| 30 | 31 | | | | | |

AUGUST 2017

| Sun | Mon | Tue | Wed | Thu | Fri | Sat |
|-----|-----|-----|-----|-----|-----|-----|
| | | 1 | 2 | 3 | 4 | 5 |
| 6 | 7 | 8 | 9 | 10 | 11 | 12 |
| 13 | 14 | 15 | 16 | 17 | 18 | 19 |
| 20 | 21 | 22 | 23 | 24 | 25 | 26 |
| 27 | 28 | 29 | 30 | 31 | | |

SEPTEMBER 2017

| Sun | Mon | Tue | Wed | Thu | Fri | Sat |
|-----|-----|-----|-----|-----|-----|-----|
| | | | | | 1 | 2 |
| 3 | 4 | 5 | 6 | 7 | 8 | 9 |
| 10 | 11 | 12 | 13 | 14 | 15 | 16 |
| 17 | 18 | 19 | 20 | 21 | 22 | 23 |
| 24 | 25 | 26 | 27 | 28 | 29 | 30 |

OCTOBER 2017

| Sun | Mon | Tue | Wed | Thu | Fri | Sat |
|-----|-----|-----|-----|-----|-----|-----|
| 1 | 2 | 3 | 4 | 5 | 6 | 7 |
| 8 | 9 | 10 | 11 | 12 | 13 | 14 |
| 15 | 16 | 17 | 18 | 19 | 20 | 21 |
| 22 | 23 | 24 | 25 | 26 | 27 | 28 |
| 29 | 30 | 31 | | | | |

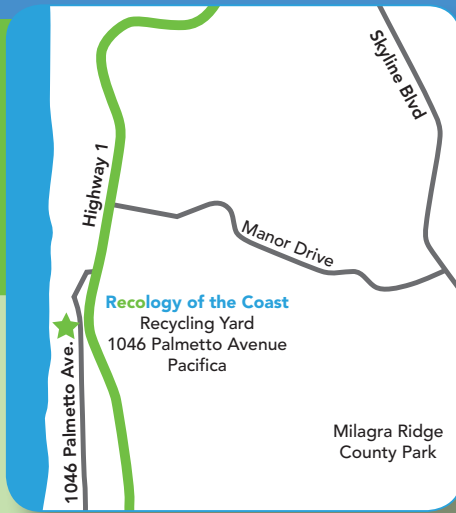
NOVEMBER 2017

| Sun | Mon | Tue | Wed | Thu | Fri | Sat |
|-----|-----|-----|-----|-----|-----|-----|
| | | | 1 | 2 | 3 | 4 |
| 5 | 6 | 7 | 8 | 9 | 10 | 11 |
| 12 | 13 | 14 | 15 | 16 | 17 | 18 |
| 19 | 20 | 21 | 22 | 23 | 24 | 25 |
| 26 | 27 | 28 | 29 | 30 | | |

DECEMBER 2017

| Sun | Mon | Tue | Wed | Thu | Fri | Sat |
|-----|-----|-----|-----|-----|-----|-----|
| | | | | | 1 | 2 |
| 3 | 4 | 5 | 6 | 7 | 8 | 9 |
| 10 | 11 | 12 | 13 | 14 | 15 | 16 |
| 17 | 18 | 19 | 20 | 21 | 22 | 23 |
| 24 | 25 | 26 | 27 | 28 | 29 | 30 |
| 31 | | | | | | |

Pursuant to the Americans with Disabilities Act, those residents defined as disabled, and whose disability prevents their placing containers at the curb, shall have the option of placing their containers near their dwelling, visible from the curb. Recology of the Coast will pick up the refuse and recycling from this location or any other location suitable to both parties, and return the container to the same location. You must contact Recology of the Coast at 650-355-9000 to participate in this program.



Upcoming Events at the Recycling Yard

Must show proof of residency

Compost Giveaways

April 22, 2017 & October 28, 2017

8:00am – 12:00pm (or until supply is gone)

Recycling Yard at 1046 Palmetto Avenue, Pacifica

Each resident may bring 2 – 30 gallon cans to collect compost.

Please note: Only cans will be filled, no boxes or bags.



Free Shredding Events

January 28, 2017 & July 22, 2017

8:00am – 1:00pm (or until the truck is full)

Recycling Yard

1046 Palmetto Avenue, Pacifica

Each resident may bring up to six (6) banker boxes of paper for free confidential shredding per event.

Free Shredding Event, Saturday, May 20, 2017

located at the Burnham Strip parking lot at the end of
Avenue Portola, El Granada 8 am – 1pm
(or until the truck is full)



2017 GREEN WASTE COLLECTION SCHEDULE

Your green waste container(s) are collected **every other week** on your regular garbage day. To find your collection schedule, match the color listed next to your address with the Collection Calendar on page 4.

| STREET | ADDRESS | DAY | WEEK | STREET | ADDRESS | DAY | WEEK | STREET | ADDRESS | DAY | WEEK |
|-----------------|---------------|-----|--------|-----------------|-------------|-----|--------|---------------|------------|-----|--------|
| 1ST AVE | | TU | YELLOW | EL GRANADA BLVD | | THU | BLUE | PRINCETON AVE | | THU | YELLOW |
| 2ND AVE | | TU | YELLOW | ESCALONA | | W | BLUE | PROSPECT | | THU | YELLOW |
| 3RD AVE | | TU | YELLOW | FERDINAND | 307 and 330 | THU | YELLOW | PURISSIMA | | TU | YELLOW |
| 4TH AVE | | TU | YELLOW | FERDINAND | 107 - 562 | W | YELLOW | ROYAL PALM | | THU | YELLOW |
| 5TH AVE | | TU | YELLOW | FERDINAND | 607 - 1123 | W | BLUE | SALVADOR | | TU | YELLOW |
| 6TH AVE | | TU | YELLOW | FRANCISCO | 807 - 997 | TU | YELLOW | SAN ANDREAS | | TU | YELLOW |
| ALAMEDA AVE | 265 - 465 | TU | YELLOW | FRANCISCO | 120 - 795 | W | YELLOW | SAN CARLOS | 507 - 1076 | W | BLUE |
| ALMERIA | | W | BLUE | FURTADO | | TU | YELLOW | SAN CARLOS | 214 - 488 | W | YELLOW |
| ALTO | | TU | YELLOW | GUERRERO | | TU | YELLOW | SAN CLEMENTE | | W | YELLOW |
| AVE ALHAMBRA | 5/9 99 - 499 | W | BLUE | HARBOUR | | THU | YELLOW | SAN JUAN | 300 - 555 | W | BLUE |
| AVENUE ALHAMBRA | 505/555 - 990 | THU | YELLOW | HARVARD | | THU | YELLOW | SAN JUAN | 207 - 239 | W | YELLOW |
| AVENUE CABRILLO | 205 - 345 | THU | YELLOW | HERMOSA | | TU | YELLOW | SAN PEDRO | | W | YELLOW |
| AVENUE CABRILLO | 314 - 730 | TU | YELLOW | HIGHLAND | | THU | BLUE | SANTA ANNA | 130/139 | THU | YELLOW |
| AVENUE GRANADA | | W | BLUE | ISABELLA | 107 - 225 | THU | YELLOW | SANTA MARIA | | W | YELLOW |
| AVENUE PORTOLA | 20 - 222 | THU | YELLOW | ISABELLA | 401 - 659 | W | YELLOW | SANTIAGO | | TU | YELLOW |
| AVENUE PORTOLA | 167/305 - 618 | W | YELLOW | LEE AVE | | TU | YELLOW | SEA CREST CT | | THU | YELLOW |
| BALBOA | 706 - 954 | W | BLUE | LEWIS | | THU | BLUE | SEA RANCH | | THU | YELLOW |
| BALBOA | 102 - 631 | W | YELLOW | MADRID | | W | BLUE | SEVILLA | 446 - 466 | THU | YELLOW |
| BRIDGEPORT | | THU | YELLOW | MADRONA | 107 - 154 | W | BLUE | SEVILLA | 106 - 434 | W | BLUE |
| BROADWAY | | THU | YELLOW | MAGELLAN | | TU | YELLOW | SHELTER COVE | | THU | YELLOW |
| CARMEL | | W | BLUE | MALAGA | | TU | YELLOW | SOLANO | | W | BLUE |
| COLUMBIA | | THU | YELLOW | MEDIO | | TU | YELLOW | SONORA | 814 - 1006 | THU | YELLOW |
| COLUMBUS | 1107 - 1182 | THU | YELLOW | MIRADA | | TU | YELLOW | SONORA | 114 - 807 | W | BLUE |
| COLUMBUS | 1306 - 1378 | TU | YELLOW | MIRAMAR | | TU | YELLOW | STANFORD | | THU | YELLOW |
| COLUMBUS | 114 - 1290 | W | YELLOW | MONTECITO | | W | BLUE | SUNRISE CT | | THU | YELLOW |
| CORAL REEF | | THU | YELLOW | MORO | | TU | YELLOW | TERRACE | 18 - 27 | TU | YELLOW |
| CORNELL | | THU | YELLOW | NAVARRA | | W | BLUE | THE ALAMEDA | 323 - 987 | THU | YELLOW |
| CORONADO | 406 - 639 | THU | YELLOW | OCEAN | 123 - 183 | THU | YELLOW | THE ALAMEDA | 200 - 314 | W | YELLOW |
| CORONADO | 120 - 347 | W | YELLOW | PALM BEACH | 100 - 260 | THU | YELLOW | VALENCIA | | W | BLUE |
| CORONADO AVE | 100 - 491 | TU | YELLOW | PALMA | 422 - 855 | THU | YELLOW | VALLEJO | 607 & 615 | W | BLUE |
| CORTEZ | | TU | YELLOW | PALMA | 900 - 995 | TU | YELLOW | VALLEJO | 115 - 606 | W | YELLOW |
| DEL MONTE | 114 & 122 | THU | BLUE | PALMA | 123 - 255 | W | YELLOW | VASSAR | | THU | YELLOW |
| DEL MONTE | 101 - 273 | W | YELLOW | PALOMA | | W | BLUE | VENTURA | | TU | YELLOW |
| DEL ORO | | W | YELLOW | PLAZA ALHAMBRA | 523 - 625 | THU | YELLOW | WESTPOINT | | THU | YELLOW |
| DOLORES | | W | YELLOW | PLAZA ALHAMBRA | 240 - 260 | W | YELLOW | YALE | | THU | YELLOW |
| DOLPHINE | | THU | BLUE | PRESIDIO | | W | BLUE | | | | |

Important Resources

Recology of the Coast

2305 Palmetto Ave

Pacifica, CA 94044

Ph: 650-355-9000

www.RecologyoftheCoast.com



Coastside Freecycle Group

http://groups.yahoo.com/group/Coastside_freecycle

San Mateo County Recycling & Compost Hotline

888-442-2666

www.RecycleWorks.org

Office Hours:

Monday – Friday, 7:30 am – 4:30 pm



Recology of the Coast
2305 Palmetto Ave, Pacifica, CA 94044
Ph: 650-355-9000
www.RecologyoftheCoast.com



PRST STD
U.S. Postage
PAID
Permit No. 63
Pacifica, CA 94044

Garbage Collection Services

Your monthly rate includes the garbage, recycle and green waste services but your monthly fee is determined by the size of your garbage container.

Life Line Low Income Requirements

To qualify for the Life Line program, you must be enrolled in PG&E’s CARE Program and utilize only 1-30 gallon garbage cart each month. CARE income restrictions are below:

| Number of Persons in Household | Annual income |
|--------------------------------|------------------|
| 1 – 2 | \$32,040 or less |
| 3 | \$40,320 or less |
| 4 | \$48,600 or less |
| 5 | \$56,880 or less |
| 6 | \$65,160 or less |
| 7 | \$73,460 or less |
| 8 | \$81,780 or less |
| 9 | \$90,100 or less |
| 10 | \$98,420 or less |

If you meet the requirements above, please provide a copy of your PG&E bill showing enrollment in the CARE Program to Customer Service and call 650-355-9000 or visit www.recologyofthecoast.com.


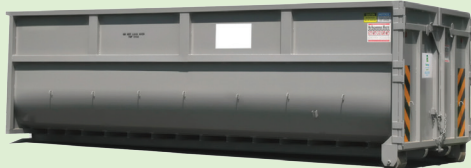
Bulky Goods Pick-Up Program

Residents in single-family, duplexes and triplexes are entitled to curbside bulky collections.

Each collection is limited to either 5-32 gallon bags OR 1 large item, no longer than 6 feet and no heavier than 100 pounds. If you wish to use more than 1 collection at the same time you may request service when ordered.

This service is offered on any of your pick-up days. Please notify our office at least 24 hours in advance of desired pick-up day. Bulky Pickups are non-transferable and cannot be carried over from year to year. Item(s) must be curbside/at the street by 6am for pick up. Driver will NOT remove item(s) from inside your home.

For more information or to schedule collect, please call 650-355-9000 or visit www.recologyofthecoast.com.

**Debris Box Service**

Recology of the Coast is the exclusive debris box hauler for the Granada and Montara Sanitary Districts. Call before 12pm Mon – Fri for same day service. Payment due at time of order. Construction and Demolition (C & D) Recycling Ordinance documentation is available and should be requested at time of order. Recology of the Coast is not liable for damage done to your driveway/property from use of debris box. Owner/Renter/ Occupant accepts responsibility should damage occur.