

2017 Pacifica Service Brochure

New Recycling Service Beginning January 2017

Many Pacificans have contacted our office to ask for every week curbside recycling pickup versus the current bi-weekly service. We are happy to say that we heard your request and **beginning January 2, 2017** Recology of the Coast is happy to announce that curbside recycling pickup will happen **every week**. What does that mean for you? You can put your cart curbside any week of the month along with your green composting cart and your gray garbage cart. Does this mean you need to put out your blue recycling cart weekly? No. **Please put your cart out when it is full**. Customers have told us that they could probably go three weeks before their cart was full but could never make it the full four weeks before the next pickup. Some customers say their cart is full after one week so put out your individual cart to fit your individual recycling needs. This additional service is being provided with **no rate increase for calendar year 2017** so please put your cart out only when it is full. Review our Recyclopedia inside this brochure if you have any questions concerning which materials are taken in which cart. Call the office if you have questions about materials not covered.

Service Reminders.....

COLLECTION TIMES: All carts must be placed curbside by 6am on your service day. Per City of Pacifica Ordinance #6-5.106, your carts should not be set out more than 12 hours in advance of pick-up nor left curbside for more than 12 hours after pick-up. Please be sure to pull your carts back from the curb once they are serviced.

We are not responsible for any articles left on or near collection containers.

CONTAINERS: We will not service ANY carts where the lids do not close completely. Please contact our office for more information at **650-355-9000**.

EXTRA GARBAGE: Extra garbage must be bagged and arrangements made with our office in advance

for pickup. **Extra Bag Tags** are available for a fee by calling **Recology of the Coast** at **650-355-9000**. You may also schedule one of your bulky item collections. See page 4 for more information.

MISSED COLLECTIONS: Please report any missed collections to our office by the following business day to **avoid a return trip charge**. We have a 24 hour messaging service so if you call after hours, please leave a detailed message and a Customer Service Representative will address your missed collection the following day, Monday – Friday.

RECYCLING THEFT: It is illegal to remove recycling materials once they have been placed inside of a recycling cart. If you are a witness to this crime, please report it by calling the Pacifica Police business line at **650-738-7314**.

Upcoming Events at the Recycling Yard – 1046 Palmetto Avenue, Pacifica

Must show proof of residency in the City of Pacifica.

FREE SHREDDING EVENTS

January 28, 2017 & July 22, 2017

8:00am – 1:00pm
(or until the truck is full)

Each resident may bring up to six (6) banker boxes of paper for free confidential shredding per event.

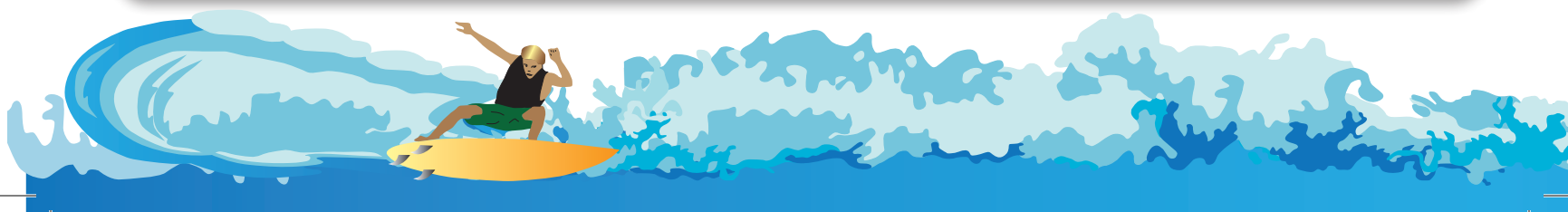


COMPOST GIVEAWAYS

April 22, 2017 and October 28, 2017

8:00am – 12:00pm
(or until supply is gone)

Each resident may bring 2 – 30 gallon cans to collect compost. *Please note: Only cans will be filled, no boxes or bags.*



Organics

The Organics Program allows you to mix green waste, food scraps and soiled paper products in the same **GREEN** cart.

Your organics cart is emptied every week on your regular service day.



ACCEPTABLE ITEMS:

Food Waste

(i.e. bones, coffee grounds, fruit, meat, vegetables)

Greenwaste (i.e. branches – cut to less than 3 feet in length and less than 3 inches in diameter, leaves, yard trimmings)

Soiled Paper Waste (i.e. coffee filters, paper milk cartons, paper plates & napkins, pizza boxes, tea bags)

UNACCEPTABLE ITEMS:

Animal waste	brick, gravel
Diapers	Furniture
Ashes	Garbage
Cat litter	Garden hose
Clothing	Non-recyclable items
Compostable or biodegradable bags	Photographs/negatives
Construction & Demolition	Plastic bags
(C & D) Debris (i.e. Sheetrock)	Recyclable items
	Sawdust
	Treated & painted wood
	Tree stumps

Dirt, rock, concrete,

Your monthly service includes one (1) GREEN and (1) BLUE cart per pickup. If you need more service on a regular basis, you may rent an additional cart for a low monthly fee.

Single Stream Recycling

The Single-Stream Recycling Program allows you to put all your recyclables into the same **BLUE** cart!



ACCEPTABLE ITEMS:

Aluminum (i.e. soda cans, CLEAN aluminum foil)

Aseptic Containers (juice and soup boxes)

Cardboard

Glass Bottles & Jars

Mixed Paper (colored, computer, magazines)

Plastics (bottles, containers #1-7, party cups, plastic cutlery, straws)

UNACCEPTABLE ITEMS:

Bubble wrap	Photographs/negatives
Clothing	Plastic bags
Food contaminated packaging	Plate glass
Furniture	PVC pipes
Garden hoses	Styrofoam
Packing peanuts	Unmarked plastics
Paper towels, napkins, facial tissue	(plastics without the #1-#7 recycling symbol)

For recycling and reuse options of the materials listed above, please visit San Mateo County RecycleWorks at www.RecycleWorks.org.

REMINDER: Please place your carts curbside by 6 a.m. on your regular service day for collection. In order for your carts to be emptied, make sure the lids are closed completely; debris may not be sticking out of the cart. If you have questions about the programs above or to inquire about renting additional carts, please call Recology of the Coast at 650-355-9000 or visit our website at www.recologyofthecoast.com.

Recyclopedia

The following is an alphabetical listing of items that can be disposed or recycled in or around the City of Pacifica. Items shown in **BOLD** are picked up curbside. If you have any questions, please call **Recology of the Coast** at **650-355-9000** or visit **www.recologyofthecoast.com**.

ALUMINUM FOIL - Recycle cart (completely clean)

ANTIFREEZE¹ - Recycling Yard

APPLIANCES² - Recycling Yard

BATTERIES; auto, cell phone – Recycling Yard

BATTERIES; household – in sealed clear plastic bag on top of recycling cart

BICYCLES - Recycling Yard

BRANCHES - Organics cart (cut to less than 3 feet in length and less than 3 inches in diameter)

BRASS - Recycling Yard

BUILDING MATERIALS - See Debris Box Information on page 4

CANS - Recycle cart (aluminum, bimetal, tin)

CARDBOARD - Extra cardboard - Recycling Yard

CHRISTMAS TREES - picked up curbside through January 31st, cut to 4ft in length or less.

COMPUTER PAPER - Recycle cart

CONCRETE - See Debris Box Information
COPPER PIPE AND WIRE - Recycling Yard

DIRT – Call the office for disposal options, 650-355-9000

ELECTRONIC WASTE² - Recycling Yard

(Zip Drives, Speakers, Monitors, Keyboards, Printers, Fax Machines, Copy Machines, Power Cables, TVs, Typewriters, VCRs, Stereo Equipment, Cell Phones, Pagers)

FLOWER POTS - Recycle cart - plastic only

FLUORESCENT/CFL BULBS - Recycling Yard

FOOD SCRAPS – Organics cart.

FURNITURE - Recycling Yard, On-Call Collection, Donate

GARDEN HOSE – Garbage cart

GLASS CONTAINERS - Recycle cart

GREENWASTE - Organics cart.

HOUSEHOLD HAZARDOUS WASTE (HHW) – call The County of San Mateo at 650-363-4718 to schedule an appointment

JUNK MAIL - Recycle cart

LUMBER - see Wood

MAGAZINES - Recycle cart

MATTRESSES – Standard mattress/box spring only at the Recycling Yard. Futons, posturepedic, memory foam, etc are NOT accepted.

MOTOR OIL¹ - Recycling Yard

NEWSPAPER - Recycle cart

PAINT; latex and oil base¹ – See Household Hazardous Waste

PAPER - Recycle cart (colored, computer, mixed)

PAPER BAGS - Recycle or Organics cart

PHONE BOOKS - Recycle cart

PLASTIC BASKETS - Recycle cart

PLASTIC CONTAINERS - (#1 - #7) Recycle cart or the Recycling Yard

PLASTIC BAGS – reuse when possible (i.e. to line garbage cans or picking up animal waste), no plastic bags in recycling cart or organics cart

PROPANE TANKS – Recycle Yard (empty tank with safety valve) or call The County of San Mateo at 650-363-4718 to schedule an appointment

SATELLITE DISHES - Recycling Yard or TV service provider

SHARPS - Recycling Yard.

SHEETROCK/DRYWALL - See Debris Box information on page 4

SOILED PAPER PRODUCTS - Organics cart

STYROFOAM PEANUTS – Garbage cart (bagged).

TIRES² - Recycling Yard

TREE LIMBS, CUTTINGS - Organics cart (cut to less than 3 feet in length and less than 3 inches in diameter)

VITAMINS/MEDICATIONS – Pacifica Police Department: 2075 Coast Highway confidential drop-off container

WOOD – Recycling Yard - Untreated, unpainted, unstained, lumber ONLY - NO pressed board, pressure treated or plywood accepted. NO tree branches, stumps, etc.

YARD WASTE - Organics Cart.

¹ A five-gallon limit per household, per month may apply.

² A fee may be charged for items such as: Refrigerators, tires, etc.

Recycle Yard

The **Recology of the Coast Recycle Yard** is located at 1046 Palmetto Ave, in Pacifica and is open Tuesday and Thursday 8 - 4 pm and Saturday 8-1 pm. Hours of Operation are seasonal.

For the current hours please visit our website at **www.recologyofthecoast.com**

The Recycle Yard is closed on the following holidays:

- New Year's Day
- Martin Luther King Day
- President's Day
- Memorial Day
- 4th of July
- Labor Day
- Weekend of the Fog Festival
- Thanksgiving Day
- Christmas Day
- Saturday before Christmas and New Year's Day



Items accepted at the Recycling Yard are:

- Antifreeze¹
- Appliances²
- Car and Household Batteries
- Cellular Phones
- Clothing (separate bag/box)
- Computers²
- Televisions²
- Cooking Oil, used
- Fluorescent tubes and bulbs
- Furniture
- Latex & Oil based paint¹ - 5 gallons
- Motor Oil and Filters¹
- Scrap Metal
- Sharps (must be inside a biohazard container)
- Small Household Appliances (like microwaves, radios, space heaters)
- Styrofoam, packing blocks only
- Tires (auto and pick-up truck only)²
- Wood, unpainted & untreated lumber

¹ A five-gallon limit per household, per month may apply.

² A fee may be charged for items such as: Refrigerators, tires, etc.

For more information, please call our Customer Service Department at **650-355-9000** or visit us online at **www.recologyofthecoast.com**.





2305 Palmetto Ave
Pacifica, CA 94044



PRST STD
U.S. Postage
PAID
Permit No. 63
Pacifica, CA 94044

Bulky Goods Pick-Up Program - Three (3) per Calendar Year

Residents in single-family, duplexes and triplexes are entitled to 3 free curbside collections per calendar year.

Each collection is limited to either 5-32 gallon bags OR 1 large item no longer than 6 feet and no heavier than 100 pounds. If you wish to use all your collections at one time, you may request it when you place your order.

This service is offered by appointment only and is subject to availability. Pick-ups are non-transferable and cannot be carried over from year to year. To avoid a return trip fee, item(s) must be curbside/at the street by 6am for pick-up. Driver will NOT remove item(s) from inside your home.

Seniors: If you need help, please call our office the day before your collection and we will send someone to help bring your garage located items to the curb. We will not be able to enter other areas of your home.

For more information or to schedule a collection, please call **650-355-9000**.

Unacceptable items include green waste, tree trunks, dirt, rock, concrete, hazardous waste and Construction and Demolition (C & D) debris.

NOTE: Please **DO NOT** use your carts in lieu of bags or boxes for disposal. Weight limits may apply and acceptability of items are up to the discretion of the driver.

ALL 2017 BULKY ITEM PICK UPS MUST BE SCHEDULED NO LATER THAN DECEMBER 15TH.

DEBRIS BOX SERVICE

Recology of the Coast is the exclusive debris box hauler for the City of Pacifica. Call before 12pm Mon – Fri for same day service. Payment due at time of order. Construction and Demolition (C & D) Recycling Ordinance documentation is available upon request – please request at time of order. Recology of the Coast is not liable for damage done to your driveway/property from use of debris box. Owner/Renter/Occupant accepts responsibility should damage occur.

Debris boxes cannot contain hazardous waste, e-waste, universal waste, toxic materials, explosives, fuel, oil, paints, solvents, chemicals, asbestos, tires, refrigerators, air conditioners, computer monitors or televisions.

Due to new disposal site regulations, the following items cannot be placed in the debris box: sofas, loveseats, mattresses, box springs and overstuffed chairs. **Extra charges will be applied if these items are included in a debris box rental.**

Life Line Low Income Requirements

To qualify for the Life Line program, you must be enrolled in PG&E's CARE Program and utilize only 1 – 20 gallon garbage cart each month. CARE income restrictions are below:

Number of Persons in Household	Annual income
1 – 2	\$32,040 or less
3	\$40,320 or less
4	\$48,600 or less
5	\$56,880 or less
6	\$65,160 or less
7	\$73,460 or less
8	\$81,780 or less
9	\$90,100 or less
10	\$98,420 or less

If you meet the requirements above, please provide a copy of your PG&E bill showing enrollment in the CARE Program to Customer Service and call **650-355-9000** or visit **www.recologyofthecoast.com**.