

Santa Rosa Recycling News

The Ratto Group

A family of companies

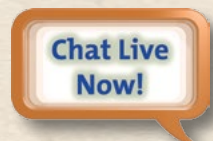


Spring 2016

unicycler.com

Contact Us:

Santa Rosa Recycling & Collection
707-586-1478



Online Chat at:
unicycler.com

Phone Hours

Monday - Friday 7am-6pm
Saturday - Sunday 7am-3pm



/NorthBayUnicycler

Upcoming Events:

April 23rd:

EARTH DAY SANTA ROSA

May 5th:

Roseland's Cinco de Mayo Festival

May 4th - Aug. 17th:

Wednesday Night Market



May 7th:



May 21st:



July 4th:

**FIREWORKS
AT THE FAIRGROUNDS**

July 22nd - Aug. 7th:



WE'RE ALL IN THIS TOGETHER

It was a simpler time. We had one can, steel, no wheels. We dragged it back and forth to the curb each week. It was the small minority who recycled by taking their bottles and cans back to redemption centers in town. Curbside recycling was introduced. Three crates: glass, newspaper, and cans. People were encouraged to rinse out their food and beverage containers so they were clean for recycling. By 2003 The Ratto Group had introduced single-stream recycling. Now residents could co-mingle all of their recyclables in one large container (with wheels!). The increase in recycling participation was dramatic. It was more convenient. Residents no longer felt that they were putting all of their recyclables on display for the whole neighborhood to see. As the years went on, The Ratto Group continued to find markets for materials so that the stream could be widened. Rigid plastics were added to the mix allowing residents to recycle broken toys, laundry baskets, and even patio chairs (as long as they fit into the container). Residents no longer had to rinse out their food containers. As long as they were empty, people could be confident in knowing that the material would be recycled without using additional precious water. The Ratto Group long had a mantra of "When in doubt-recycle it!" when it came to deciding whether something should be recycled or thrown in the garbage. Now the climate is changing again.



Today's reality is that most of the world's manufacturing is done in China and throughout the Asian Pacific. This means that in order for materials to be effectively recycled, they must be shipped to markets overseas. In recent years, China has made efforts to reduce their pollution from manufacturing as well as waste. They have increased the standards for the recyclable materials which they receive for manufacturing. This means that now, more than ever, it is important to ensure that those jars of pasta sauce and cans of soup are empty. This doesn't mean that we need to go back to rinsing our containers again, but they should be completely empty so that any residue is not going to leak out and contaminate the other materials that are in your single-stream recycling container.

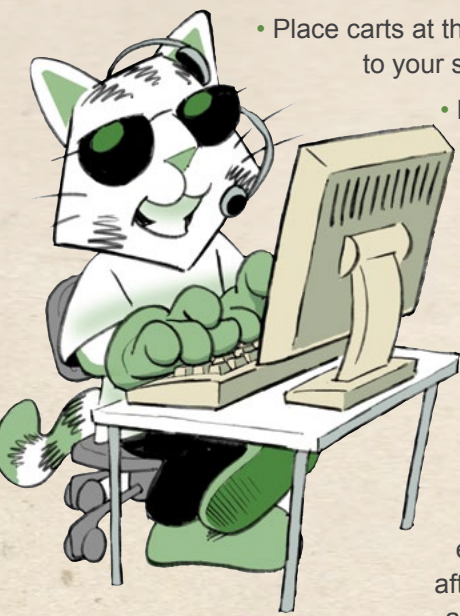
Many people wonder just what happens to the contents of your recycling container once it is emptied into the truck each week. Most people by now are well aware that the Ratto Group uses "Split-body" trucks which allows for picking up two different containers in one trip. This means that the garbage can be taken to the landfill and emptied there, while the recycling material is taken to our sorting facility on Standish Avenue in Santa Rosa. There the material is sorted by hand as well as automated machines. The material is then baled and prepared for shipping to manufacturing companies overseas. There is always some material left over that cannot be recycled. This material is called "Residuals". The facilities on Standish Avenue are recycling facilities, and not for garbage disposal. Therefore the State of California monitors these facilities to ensure that only a small percentage of the material is residual which ultimately ends up in the landfill. A recent article in The Atlantic quoted Tom Szaky- CEO of Terracycle in New York as saying "Typically, 50% of what you put in your recycling bin is never recycled. It's sorted and thrown out..." California rules for residual require that percentage to be less than 10%. This is why it is very important that residents only use their recycling containers for acceptable recyclable materials. Garbage in the recycling containers contaminates the rest of the materials and puts the facility and its workers at risk.

This changing climate is not unique to Sonoma County. In a recent San Jose Mercury News article it was reported that the City of San Jose is considering increasing the size of garbage containers to help reduce recycling contamination. They are finding that residents are placing garbage in with their recycling when they do not have room for it in their garbage containers. As a Ratto Group customer you have a choice as to which size garbage container you have. We all want to have the smallest size garbage container and recycle as much as possible, but in some cases it may be necessary to have a larger garbage container to ensure that the recycling is full of clean and recyclable materials. The cost savings of having a smaller garbage container may be off-set by fees associated with contaminating your recycling. In other words, if your garbage container is too small to accommodate your waste, don't contaminate your recycling. Just contact us for a larger container.

Links to the articles referenced above can be found on our website unicycler.com in our news section. There, you can also find helpful videos solving some of those more "controversial" questions such as: When is a pizza box recyclable? How clean do food containers have to be? The website also contains helpful, printable materials which explain just what is acceptable in your recycling container. By following the rules and spreading the word, together we can keep recycling convenient and cost-effective in Sonoma County.

Guidelines & Reminders from Customer Service

To help us provide the best service to you, please observe the following:



- Place carts at the road edge the night prior to your service day.
- Please leave 3 feet between garbage, recycling & yard waste carts.
- Place garbage loosely in your cart. Carts that are overstuffed or have material jammed into them may not empty completely.
- Please remove your containers from the road edge as soon as possible after they have been serviced as is practical.

- Be sure all items are contained inside your carts. Carts that have items sticking out of them or have material piled on top may not be emptied or may receive additional charges.
- You may opt to set out recycle and yard waste carts only when full if you choose.

For everyone’s safety and convenience, we request that you pay special attention to the following:

- Do not place carts within three feet of vehicles, mailboxes, fire hydrants, other obstacles or personal property.
- Collection vehicles need 14’ overhead clearance. Carts should not be placed in an area with overhangs, trees or other obstacles.
- Please park your car in your driveway the night before your collection day whenever possible. There may be a delay in collection of blocked carts.
- If you have any questions, please call or check out our new on-line chat option at *unicycler.com*.

Extra Trash

- If you have an overloaded garbage cart or extra bags of garbage piled on top of, or alongside your cart, you may receive an automatic charge for each extra bag or can of garbage. Carts are considered overloaded if the lid will not close.
- If you have extra garbage, call our office at 586-1478 by 2:30 pm the day before your regular collection day to order extra service and avoid confusion when you receive your bill. Do not overstuff your carts as they may not empty completely.

Bulky Item Pickups

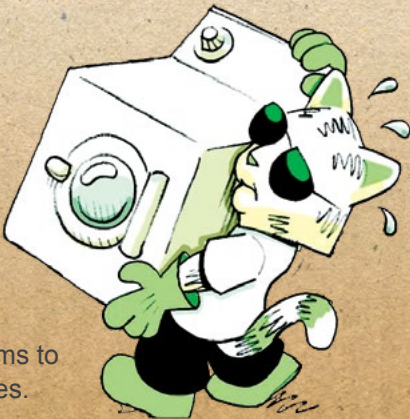
The Ratto Group - *A family of companies* local hauler (Santa Rosa Recycling & Collection) offers Bulky Item Pick up for items that are too large for your cart.

Items such as mattresses, couches, and large furniture items can be picked up free of charge (up to 4 times per year) for single-family residential customers. Call us at 586-1478 to schedule a pick up. Details for this service can be found on our website www.unicycler.com.

We make any attempt to reduce, reuse and recycle your bulky items and keep them out of the landfill. Help us out by trying to donate your item before disposing of it.

Please Remember:

- We are unable to pick up hazardous waste. Call the HHW hotline at 795-2025 or visit *unicycler.com* for more information.
- Please direct reusable items to thrift or second hand stores.



Ask the Unicycler

Dear Unicycler,

What is one of the easiest ways to reduce the amount of waste sent to the landfill each month?

Signed,

Randy Reducer

Dear Mr. Reducer:

One of the best ways to reduce your waste is by composting your food scraps! Residents can now put ALL food scraps in their yard debris cart. Almost 30% of residential garbage is food waste. By sending your food scraps to be composted instead of land filled you are preserving landfill space and allowing the resource to be used as soil-enriching compost rather than buried forever in a landfill. This includes: meat/fish bones, cheese, food leftovers (be sure to remove all packaging), fruits, vegetables, & their peelings, pasta, rice, bread, coffee grounds (filters too!), tea bags, soiled paper towels and egg shells. This in addition to the usual items accepted such as: weeds, leaves, landscape pruning, grass clippings, tree branches less than 4” in diameter by 2’ long.

In order for this program to be successful, we need to work together to keep contaminants out of our yard debris cart. That means NO: glass, plastic bags (even so-called “compostable” plastics), poison oak, cactus, palm fronds, pampas grass, bamboo, Sudden Oak Death infested material, sod, dirt, rocks, animal waste, tree stumps, or any other refuse.

For a complete list of yes & no items please visit our website

unicycler.com



Have a recycling or environmental question? Email us at greenteam@unicycler.com. Or, like us on Facebook and post your questions there.

Yard Waste Guidelines

- Place all grass cuttings, leaves & weeds, tree & shrubbery trimmings, berry bushes and other yard & garden waste inside your green rolling cart, also referred to as your yard waste cart. Branches under 4 inches in diameter and less than 2 feet long are accepted.
- Also accepted in the yard waste carts are all food scraps such as fruits and vegetables (including pits and nuts), coffee grounds with filters, tea bags, kitchen prep scraps, bread, grains, pasta, baked goods, eggs, eggshells and non-coated paper products such as paper plates, shredded paper and napkins.
- Place your yard waste cart at the curb allowing at least three feet of space between containers.
- All green waste must be in the container. Loose material will not be collected.
- Do not put yard waste in plastic bags.
- Please put your garbage in the correct can. Contamination can lead to higher costs and higher prices in garbage service.

Keep Your Green Clean!

Keep your cart clean by wrapping your food scraps in a brown paper bag or newspaper. The following materials are banned from your yard waste cart.

- garbage • sod or dirt • rock • gravel or concrete • lumber • playground bark • plastic bags
- nursery pots or plastic • pet waste • palm fronds • processed or treated wood products
- bamboo • cups, packaging & straws • liquid waste & ice • plastics • take-out containers
- compostable plastics (even bio-bags) • synthetic corks • waxed cardboard • poison oak
- Sudden Oak Death infested material • BBQ ashes • tree stumps

✂ Cut Out This Handy Recycle Guide ✂

ACCEPTED FOR RECYCLING ONLY

ACEPTADO PARA RECICLAR SOLAMENTE



Metal & Aluminum Cans
Latas de Metal y Aluminio



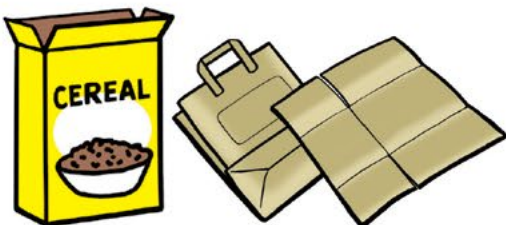
Glass Bottles & Jars
Jarras y Botellas de Vidrio



Plastic Bottles (with lid)
Botellas de Plástico (con Tapa)



Empty Household Plastic Containers & Rigid Plastic Items (No Clamshells)
Recipientes Para el Hogar de Plástico Vacíos Así Como los Artículos de Plástico Rígido (No Envases Para Empaque de Poliester Tipo Almeja)



Paper (No Shredded Paper), Paper Bags, Cereal Boxes, Cardboard (Flattened)
Papel (No Papel Picado), Bolsas del Papel, Cajas de Cereales, Carton (Aplaste Todas las Cajas),



Milk Cartons, Soy/Rice Milk & Juice Boxes
Cartones de Leche, de Soya/Arroz y Cajas de Jugo



Newspaper, Magazines, Office Paper, Catalogs & Telephone Books
Periódicos, Revistas, Papel de Oficina, Catálogos y Guías Telefónicas



No Plastic Bags
No Bolsas de Plástico

Questions? Not sure which bin?

¿Preguntas? ¿No estoy seguro que contenedor?

unicycler.com

No Trash
No Basura

TRGHH12X91015

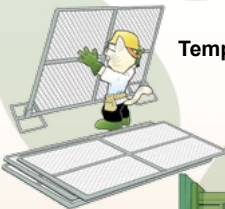
Unicycler Offers Full Construction Services!

The Unicycler has been busy as of late. We are proud to announce that the Ratto Group is now offering full construction services for all of your disposal needs. By "Construction Services" we mean just about everything a general contractor would need to get a building project going. This also includes disposal of the construction and demolition materials. The majority of this is diverted from the landfill. Exchanges of debris boxes can even be done same day. We now offer a full array of the following:

Home & Business Cleanouts



Temporary Fencing



Recycling & Debris Boxes



Private Street Sweeping



Give us a call at 707-585-5222 or visit us at www.unicycler.com for more information

Why is it Important to Recycle Used Motor Oil and Oil Filters?

- Used oil can contain contaminants such as lead, magnesium, copper, zinc, chromium, arsenic, cadmium and chlorinated compounds.
- Don't pour used motor oil down the drain or on the ground. One gallon of used motor oil can pollute one million gallons of drinking water.
- Used motor oil represents more than 40 percent of the oil pollution in our country's waterways.
- Used oil is easy to recycle. It can be re-refined into usable motor oil.
- Recycle your used oil filter. Even after draining, used oil filters contain about 10 ounces of used oil, as well as one pound of reusable steel.
- All the used oil filters sold annually in California could be recycled into 67 million pounds of steel, enough to build three large football stadiums!



Here in Sonoma County we recycle 3,800 gallons of oil per year. Recycling used oil and filters reduces our dependence on foreign oil, saves valuable resources, protects the health of our families, and is the only legal way to dispose of them! You haven't finished changing your oil until you've taken this last important step. There are convenient options for recycling used oil and filters in Sonoma County:

Curbside recycling service for used motor oil and filters!

Call Customer Service at 586-2283 or 800-243-0291 to request a special container and zip-lock filter bag. Then call our office to request a pickup. Place oil and filter at the curb next to (not in) your recycling cart for pickup on your regular collection day. The driver will leave a replacement container when your full one is collected.

Drop-off Recycling Locations!

There are many locations in Sonoma County that accept motor oil for recycling. Most also take filters. To find a list of locations nearest you, visit http://recyclenow.org/toxics/motor_oil_dropoff.asp. Or check your Sonoma County Recycling Guide in the AT&T Phone Book. Find it behind the tab under Recycling in the AT&T Yellow Pages.

Chat Live Now!

No need to spend your time on the phone. Simply go to unicycler.com during business hours and click on the "Chat Now" option on the right side. A Customer Service Agent will be able to handle whatever situation you may have. Or, if it's past business hours, click on "Leave a message" and we'll get back to you within 24 hours.



Santa Rosa Recycling & Collection

PO Box 4299
Santa Rosa, CA 95402

Tel (707) 586-1478
Tel (800) 243-0291
Fax (707) 586-5543

A Message From The Ratto Group

Dear Valued Customer,

The Ratto Group, a family of companies, is proud to have served the Sonoma County residents for many decades. Providing refuse and recycling services requires a great many dedicated individuals. This is the perfect opportunity to recognize a very special group of employees. Because of their hard work and dedication to the Community they love The Ratto Group has been able to provide great service for years on end. The beneficiary of this dedication has been the Cities and Communities that make up Sonoma County. The special employees listed below have all been with our family of companies for over 25 years, some as long as 40 years! We all owe them a debt of gratitude.

Agustin Barajas	Jerry Roy, Jr.	Leonard Cox	Ramon F. Vega, Jr.
Agustin G. Rico	Jerry Roy, Sr.	Leonel Fabian Rodriguez	Raul Barajas Carbajal
Armando Tapia	Jerry Wimmer	Lino Laranjo	Richard L. White
Arturo Morales	Jesus Garfia	Lorenza M. Sanchez	Robert Dieckmann
Bertha Sotelo	Jody Ann Weiland	Loretta Shaw	Rogelio Guzman
Charles Giovanetti	John L. Roy	Luis Beltran Campos	Rogelio Roman
Cheryl Ferina	John Scoma, Jr.	Manuel Escandon	Salvador Garcia
Daniel Clark	Jose De La Pena	Manuel Laranjo	Salvador Sanchez
David Estupinan	Jose Gomez-Rizo	Mark Steiner	Santiago Magdaleno-Enriquez
Eliseo B. Jacques	Jose Guadalupe Sotelo-Arias	Michael A. Tournahu	Stanley G. Pronzini
Fidel Medina-Barajas	Jose L. Robles	Michael Lockwood	Susan L. Nelson
Francisco Gonzalez	Jose L. Solorio	Nicholas J. Mattos	Walter (Dutchy) Myers
Henry V. Overbay, Jr.	Jose Meza-Reyes	Octavio Estupinan Guerrero	
Ismael Rico	Jose Palomino Pareja	Pedro Gomez	
Javier Sotelo-Arias	Juan Garcia	Phyllis Hand	



This group of special employees and the entire Ratto Team work diligently each and every day to provide these great services to the Community. We are proud to recognize their contribution to our company and the community as a whole. - Rick Downey - General Manager and The Ratto Family

TOXICS DISPOSAL IN SONOMA COUNTY

SERVICE OPTIONS FOR RESIDENTS

Household Toxics Facility

The Household Toxics Facility is open every week for **free drop-off** of toxics from Sonoma County residents.

Appointment: Not required

Hours: **Thursday, Friday & Saturday 7:30 am–2:30 pm**

Location: **Central Disposal Site (Bldg. 5) 500 Mecham Rd., Petaluma**

Community Toxics Collections

Every week there is a toxics collection somewhere in Sonoma County. Bring your ID to prove residency.

Appointment required: Call **795-2025 option 3** or toll-free **1-877-747-1870** or email toxicsdisposal@cleanharbors.com

Hours: **Tuesdays 4-8 pm**

Toxic Rover Pickup Service

Have your toxics picked up at your home. Services are provided on a first-come-first-serve basis.

Fee: \$50/pickup (limit 440 pounds). Limited free pickup available for seniors over 80 years of age and housebound residents.

Appointment required: Call **795-2025 option 4** or toll-free **1-877-747-1870** or email toxicsdisposal@cleanharbors.com

Hours: **Wednesdays** limited appointments

Community Toxics Collections schedule

March 2016	May 2016	July 2016
1 Rincon Valley	3 Guerneville	5 Cloverdale
8 Petaluma	10 Oakmont	12 Santa Rosa, SE
15 Larkfield	17 Healdsburg	19 Sonoma
22 Sebastopol	24 Boyes Hot Springs	26 Rohnert Park
29 Santa Rosa, NW	31 Larkfield	
April 2016	June 2016	August 2016
5 Windsor	7 Bodega Bay	2 Windsor
12 Sonoma	14 Santa Rosa, NW	9 Sebastopol
19 Cloverdale	21 Petaluma	16 Forestville
26 Santa Rosa, SE	28 Kenwood	23 Glen Ellen
		30 Cotati

Locations of Community Toxics Collections will be provided when you schedule your appointment. Call at least 24 hours prior to the collection event. **For a complete schedule, visit www.recyclenow.org**

Transportation & packing: State transportation laws limit each vehicle to a maximum of 15 gallons of liquid (with a maximum of 5 gallons per container) or 125 pounds of solid material • Never mix chemicals • Place in sealed containers in the trunk, packed to prevent spills • Syringes/needles must be in a sealed and labeled *approved* container. **Not accepted:** Explosives or ammunition • Radioactive materials • Electronics • Biological wastes (except syringes) • Controlled substances.



SERVICE OPTIONS FOR BUSINESSES

Household Toxics Facility

Located at the Central Disposal Site, the Household Toxics Facility is open for drop-off of hazardous waste from qualified Sonoma County businesses.

Appointment required: Call **795-2025 option 2** or toll-free **1-877-747-1870** or email toxicsdisposal@cleanharbors.com

Forms & fees: Paperwork required. Download forms at www.recyclenow.org. \$25 processing fee plus disposal fees based on type and quantity of waste.

Hours: **Tuesdays & Wednesdays 7:30 am–2:30 pm**

Location: **Central Disposal Site (Bldg. 5) at 500 Mecham Rd., Petaluma**

Community Toxics Collections

Every week there is a toxics collection somewhere in Sonoma County. Space may be limited for business appointments and is based on availability.

Appointment required: Call **795-2025 option 2** or toll-free **1-877-747-1870**

Forms & fees: Paperwork required. Download forms at www.recyclenow.org. \$25 processing fee plus disposal fees based on type and quantity of waste.

Hours: **Tuesdays 4-8 pm** for a complete schedule of Community Toxics Collections, visit www.recyclenow.org



The Household Hazardous Waste Program is funded by the Sonoma County Waste Management Agency.

www.recyclenow.org Eco-Desk 565-3375



SONOMA COUNTY 2016 RECYCLING GUIDE

Get info to reduce your waste.

Americans waste 25% of the food they purchase.

Food. Too good to waste.

On average, each Sonoma County household disposes of 190 pounds of food in the household garbage per year.



565-DESK(3375)

WWW.RECYCLENOW.ORG

