

Petaluma Recycling News



Part of **The Ratto Group**
A Family of Companies

Spring 2017

unicycler.com

Contact Us:

Petaluma Refuse & Recycling

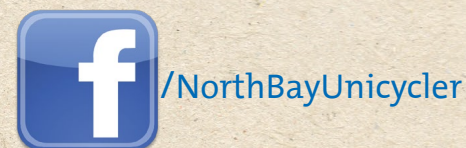
PO Box 14609
Santa Rosa, CA 95402
(707) 766-6026

Phone Hours

Monday - Friday 7am-6pm
Saturday - Sunday 7am-3pm

Office Address

1309 Dynamic St.,
Petaluma, CA 94954



Upcoming Events:

March 6th - 10th:

**Petaluma Spring Curbside
Cleanup**

April 29th:



June 21st - June 25th:



LOOKING TOWARD THE FUTURE

The recycling industry is an ever-changing landscape of new ideas and advancing technology. To keep up with the changing climate companies like The Ratto Group need to be ready to make changes both big and small to capture as many recyclable materials as possible, and reduce waste in Sonoma County. We have come a long way from the three crates at the curb containing paper, aluminum, and glass. With the advent of single stream recycling, we have seen a huge increase in the materials diverted from landfills and participation has been brought to mainstream levels where recycling has become as common as brushing your teeth. To effectively recycle all of the mixed materials residents can now place in their blue carts, those materials must be sorted and prepared for shipping to manufacturers who can give them a new life.



One big change that is currently happening at our facilities on Standish Avenue in Santa Rosa is a complete overhaul of our Materials Recovery Facility (MRF). These sorting facilities are essential to maintaining the convenience and effectiveness of single-stream recycling. Our first MRF was built in 2002 and at the time it was the latest and greatest for sorting recycling and preparing the material for market. Technology has advanced since then, as has the variety of material that can be accepted for recycling.

Currently we operate 2 MRFs in Santa Rosa. One at 3417 Standish which was opened in 2002 and another right across the street at 3400 which was acquired when we took over the facility from Waste Management in 2008. In December 2016, the 3417 site was shut down to begin phase 1 of what will be a two-phase project to improve recycling in Sonoma County. The entire yard has been re-paved and new concrete surfaces have been placed in the receiving and processing areas inside the facility. We are installing a gray water system for proper treatment of run off when the materials are brought in to the facility. The building itself was also in need of improvements and repairs which are also being completed. We are working with the county to obtain new permits which will allow for effective sorting well into the future. A combination of new equipment and rebuilding existing equipment will allow us further sorting of materials and reduce residuals (materials that cannot be recycled and must be taken to a landfill).

According to General Manager Rick Powell the first phase of this project will be completed in the summer of 2017. Once completed, our second MRF at 3400 will be shut down for a similar remodel. The entire project is expected to be completed by the end of 2017 with a price tag of over \$10 million dollars.

In addition to improved sorting capabilities we are also in the process of replacing trucks in our fleet. We have also changed the entire fleet to Neste Renewable Diesel. Neste is a pioneer and world leader in renewable fuels. Their renewable diesel is 100% sustainable produced from waste fats, residues, and vegetable oils. The change to this fuel reduces greenhouse gas emissions by up to 80%.

The Ratto Group has served Sonoma County for decades. We've been privileged to be a part of the efforts to reduce greenhouse gases, and solid waste disposal. We are confident with these new innovations; our community will continue on to the future with a culture of ecologically-minded values that is part of what makes this such a special place to live.

Yard Waste Guidelines

- Place all grass cuttings, leaves & weeds, tree & shrubbery trimmings, berry bushes and other yard & garden waste inside your green rolling cart, also referred to as your yard waste cart. Branches under 4 inches in diameter and less than 2 feet long are accepted.
- Also accepted in the yard waste carts, are all food scraps such as fruits and vegetables (including pits and nuts), coffee grounds with filters, tea bags, kitchen prep scraps, bread, grains, pasta, baked goods, eggs, eggshells and non-coated paper products such as paper plates, shredded paper, and napkins.
- Place your yard waste cart at the curb allowing at least three feet of space between containers.
- All green waste must be in the container. Loose material will not be collected.
- Do not put yard waste in plastic bags.
- Please put your garbage in the correct can. Contamination can lead to higher costs and higher prices in garbage service.

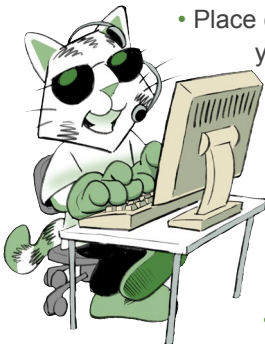
Petaluma Refuse & Recycling
PO Box 14609
Santa Rosa, CA 95402

Tel (707) 766-6026
Tel (800) 243-0291
Fax (707) 586-5543



Guidelines & Reminders from Customer Service

To help us provide the best service to you, please observe the following:



- Place carts at the road edge the night prior to your service day.
- Please leave 3 feet between garbage, recycling & yard waste carts.
- Place garbage loosely in your cart. Carts that are overstuffed or have material jammed into them may not empty completely.
- Please remove your containers from the road edge as soon after they have been serviced as is practical.
- Be sure all items are contained inside your carts. Carts that have items sticking out of them or have material piled on top may not be emptied or may receive additional charges.
- You may opt to set out recycle and yard waste carts only when full if you choose.

For everyone's safety and convenience, we request that you pay special attention to the following:

- Do not place carts within three feet of vehicles, mailboxes, fire hydrants, other obstacles or personal property.
- Collection vehicles need 14' overhead clearance. Carts should not be placed in an area with overhangs, trees or other obstacles.
- Please park your car in your driveway the night before your collection day whenever possible. There may be a delay in collection of blocked carts.
- If you have any questions, please call or check out our new on-line chat option at unicycler.com.

Extra Trash

- If you have an overloaded garbage cart or extra bags of garbage piled on top of, or alongside your cart, you may receive an automatic charge for each extra bag or can of garbage. Carts are considered overloaded if the lid will not close.
- If you have extra garbage, call our office at 766-6026 by 2:30 pm the day before your regular collection day to order extra service and avoid confusion when you receive your bill. Do not overstuff your carts as they may not empty completely.

Bulky Item Pickups

The Ratto Group - A family of companies local hauler (Petaluma Refuse & Recycling) offers Bulky Item Pick up for items that are too large for your cart.

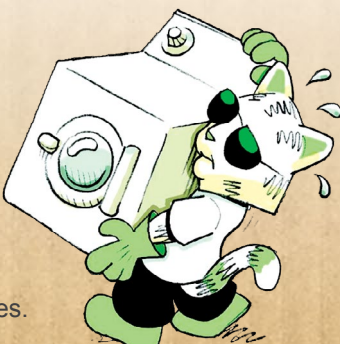
Items such as mattresses, couches, and large furniture items can be picked up for single-family residential customers. Since we use a different truck to collect these items, please call Petaluma Refuse & Recycling at 766-6026 to schedule a pick up.

We make any attempt to reduce, reuse and recycle your bulky items and keep them out of the landfill. Help us out by trying to donate your item before disposing of it.

Please Remember:

- We are unable to pick up hazardous waste. Call the HHW hotline at 795-2025 or visit unicycler.com for more information.
- Please direct reusable items to thrift or second hand stores.

*Certain items have pick-up fees. Please call or chat online at unicycler.com for details.



Cut Out This Handy Recycle Guide



ACCEPTED FOR RECYCLING ONLY

ACEPTADO PARA RECICLAR SOLAMENTE

Metal & Aluminum Cans
Latás de Metal y Aluminio

Glass Bottles & Jars
Jarras y Botellas de Vidrio

Plastic Bottles (with lid) & Rigid Plastic Items
Botellas de Plástico (con tapa)
Recipientes Para el Hogar de Plástico Vacíos Así Como los Artículos de Plástico Rígido (No Envases Para Empaque de Poliéster Tipo Almeja)

Empty Household Plastic Containers

Paper (No Shredded Paper), Paper Bags, Cereal Boxes, Cardboard (Flattened)
Papel (No Papel Picado), Bolsas del Papel, Cajas de Cereales, Carton (Aplaste Todas las Cajas),

Milk Cartons, Soy/Rice Milk & Juice Boxes
Cartones de Leche, de Soya/Arroz y Cajas de Jugo

Newspaper, Magazines, Office Paper, Catalogs & Telephone Books
Perifoneos, Revistas, Papel de Oficina, Catálogos y Guías Telefónicas

Questions? Not sure which bin?

¿Preguntas? ¿No estoy seguro que contenedor?

unicycler.com

No Trash
No Basura

TRCHH2X9105

TOXICS DISPOSAL IN SONOMA COUNTY

SERVICE OPTIONS FOR RESIDENTS

Household Toxics Facility

The Household Toxics Facility is open every week for free drop-off of toxics from Sonoma County residents.

Appointment: Not required

Hours: **Thursday, Friday & Saturday**
7:30 am–2:30 pm

Location: **Central Disposal Site (Bldg. 5)**
500 Mechem Rd., Petaluma

Community Toxics Collections

Every week there is a toxics collection somewhere in Sonoma County. Bring your ID to prove residency.

Appointment: Call 795-2025 option 3 or toll-free 1-877-747-1870 or email toxicsdisposal@cleanharbors.com

Hours: **Tuesdays 4-8 pm**

Toxic Rover Pickup Service

Have your toxics picked up at your home. Services are provided on a first-come-first-serve basis.

Fee: \$50/pickup (limit 440 pounds). Limited free pickup available for seniors over 80 years of age and household residents.

Appointment: Call 795-2025 option 4 or toll-free 1-877-747-1870 or email toxicsdisposal@cleanharbors.com

Hours: **Wednesdays** limited appointments

Community Toxics Collections schedule

April 2017

4 Windsor
11 Sonoma
18 Cloverdale
25 Santa Rosa, E
May 2017
2 Guerneville
9 Oakmont
16 Healdsburg
23 Boyes Hot Springs
30 Larkfield

June 2017

6 Bodega Bay
13 Santa Rosa, W
20 Petaluma
27 Kenwood
July 2017
11 Cloverdale
18 Santa Rosa, NE
25 Sonoma

Locations of Community Toxics Collections will be provided when you schedule your appointment. Call at least 24 hours prior to the collection event. For a complete schedule, visit www.recyclenow.org

Transportation & packing: State transportation laws limit each vehicle to a maximum of 15 gallons of liquid (with a maximum of 5 gallons per container) or 125 pounds of solid material • Never mix chemicals • Place in sealed containers in the trunk, packed to prevent spills • Syringes/needles must be in a sealed and labeled approved container. **Not accepted:** Explosives or ammunition • Radioactive materials • Electronics • Biological wastes (except syringes) • Controlled substances.

SERVICE OPTIONS FOR BUSINESSES

Household Toxics Facility

Located at the Central Disposal Site, the Household Toxics Facility is open for drop-off of hazardous waste from qualified Sonoma County businesses.

Appointment: Call 795-2025 option 2 or required: toll-free 1-877-747-1870 or email toxicsdisposal@cleanharbors.com

Forms & fees: Paperwork required. Download forms at www.recyclenow.org. \$25 processing fee plus disposal fees based on type and quantity of waste.

Hours: **Tuesdays & Wednesdays 7:30 am–2:30 pm**

Location: **Central Disposal Site**
(Bldg. 5) at 500 Mechem Rd., Petaluma

Community Toxics Collections

Every week there is a toxics collection somewhere in Sonoma County. Space may be limited for business appointments and is based on availability.

Appointment: Call 795-2025 option 2 or required: toll-free 1-877-747-1870

Forms & fees: Paperwork required. Download forms at www.recyclenow.org. \$25 processing fee plus disposal fees based on type and quantity of waste.

Hours: **Tuesdays 4-8 pm** for a complete schedule of Community Toxics Collections, visit www.recyclenow.org

