

Petaluma Recycling News



Part of **The Ratto Group**
A Family of Companies

Spring 2015

unicycler.com

Contact Us:

Petaluma Refuse & Recycling

PO Box 14609
Santa Rosa, CA 95402
(707) 766-6026

Phone Hours

Monday - Friday 7am-6pm
Saturday - Sunday 7am-3pm

Office Address

1309 Dynamic St.,
Petaluma, CA 94954

New!

Online Chat at:
unicycler.com



/NorthBayUnicycler

Upcoming Events:

March 9th - 13th:

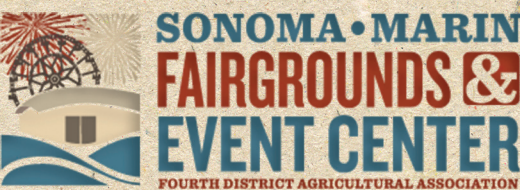
**Petaluma Spring Curbside
Cleanup**

April 25th:



June 24th - 28th:

Sonoma Marin Fair



In This Issue

How to Recycle Oil.....	1
Save Money on Can Size.....	1
Green Waste Requirements.....	1
Guidelines, Overloads and BIPs.....	2
Curbside Recycle Guidelines.....	2
Our Green Family Members.....	2
ToxicDisposalGuide.....	2

It's Time For Spring! Clean Out and Clean Up!

It's about that time to start spring cleaning and de-cluttering your home. Often our busy lives become too overwhelmed. Clutter starts to build. The Ratto Group's mission is to help get things back on track with our "Go Green Clean Out" program.

Whether items were left behind by an old tenant, remodeling project, office move, or planning for a remodel of your home or backyard, we can help get rid of the debris! Why move items yourself? We will haul everything from where it sits, just point out what you no longer want, need, or have a use for, and we will take care of the rest!

Our teams consist of green waste disposal professionals who can help you with your home clean out. We will provide you with the peace of mind of knowing that you're "junk" is being disposed of in the most ethical way possible. We offer professional crews that have been trained in cleanout practices to make the job as efficient as possible.

No worries. We will provide dumpsters, cans, bins, and containers. We have the arsenal for any size job! We provide the following services for:

- Garage clean out •Basement clean out •Attic clean out •Property clean out •Estate clean out •Office clean out
- Warehouse clean out •Construction clean out •Foreclosure trash out and clean up •Downsizing clean out •Yard waste clean out

We love what we do!

As fully licensed proprietors of a D-63 Construction Clean-up contractor license, our experienced staff is fully skilled in working closely with construction teams or on their own. We are not only licensed but fully insured.

Where does your stuff go?

We here at The Ratto Group, pride ourselves in doing our best to keep the environment green, and we'll donate, recycle, and reuse all possible items to do our part in keeping Sonoma County clean! Our team will first sort out anything in good condition. We donate what we can and recycle the rest so that the community and the environment benefit. Our crew can quickly identify what can and cannot be recycled and separate the remaining items accordingly. The team also ensures that all hazardous materials like refrigerant, medical items or items with lead-based paint are removed before sending the "junk" to our recycling center. Particular care is taken when recycling old appliances and electronic equipment which can pose hazards.

How to get started:

Just give us a call at 707-495-0864, provide the location, and we will check out the site and give an estimate at no cost then provide your onsite quote! Our team operates seven days a week. All you have to do is provide us with access, and we will have everything cleaned out in no time!



Save Yourself Some Money!

If you are generating less waste, you can reward yourself with a smaller garbage bill by exchanging your current cart for a smaller size.

We offer four levels of service. Super recyclers or small families may be able to reduce their waste and subscribe to the 20 gallon service.

If you would like to change your service level, please contact our office for details and rates.

Yard Waste Guidelines

- Place all grass cuttings, leaves & weeds, tree & shrubbery trimmings, berry bushes and other yard & garden waste inside your green rolling cart, also referred to as your yard waste cart. Branches under 4 inches in diameter and less than 2 feet long are accepted.
- Also accepted in the yard waste carts are food scraps such as fruits and vegetables (including pits and nuts), coffee grounds with filters, tea bags, kitchen prep scraps, bread, grains, pasta, baked goods, eggs, eggshells and non-coated paper products such as paper plates and napkins. **No meat, bones, dairy or seafood products in the yardwaste can.**
- Place your yard waste cart at the curb allowing at least three feet of space between containers.
- All green waste must be in the container. Loose material will not be collected.
- Do not put yard waste in plastic bags.
- Please put your garbage in the correct can. Contamination can lead to higher costs and higher prices in garbage service.

Keep Your Green Clean!

Keep your cart clean by wrapping your food scraps in a brown paper bag or newspaper.
The following materials are banned from your yard waste cart.

- garbage • sod or dirt • rock • gravel or concrete • lumber • playground bark • plastic bags • nursery pots or plastic • pet waste • palm fronds • processed or treated wood products • bamboo • cups, packaging & straws • liquid waste & ice • plastics • cardboard • take-out containers • compostable plastics (even bio-bags) • synthetic corks • waxed cardboard • poison oak • Sudden Oak Death infested material • BBQ ashes • tree stumps • meat & bones • seafood & shells • cheese • dairy products

Petaluma Refuse & Recycling

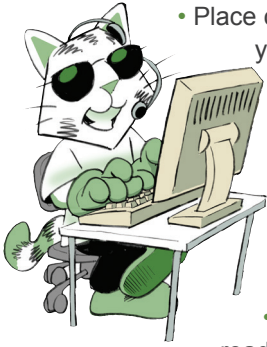
PO Box 14609
Santa Rosa, CA 95402

Tel (707) 766-6026
Tel (800) 243-0291
Fax (707) 586-5543



Guidelines & Reminders from Customer Service

To help us provide the best service to you, please observe the following:



- Place carts at the road edge the night prior to your service day.
- Please leave 3 feet between garbage, recycling & yard waste carts.
- Place garbage loosely in your cart. Carts that are overstuffed or have material jammed into them may not empty completely.
- Please remove your containers from the road edge as soon after they have been serviced as is practical.

- Be sure all items are contained inside your carts. Carts that have items sticking out of them or have material piled on top may not be emptied or may receive additional charges.
- You may opt to set out recycle and yard waste carts only when full if you choose.

For everyone's safety and convenience, we request that you pay special attention to the following:

- Do not place carts within three feet of vehicles, mailboxes, fire hydrants, other obstacles or personal property.
- Collection vehicles need 14' overhead clearance. Carts should not be placed in an area with overhangs, trees or other obstacles.
- Please park your car in your driveway the night before your collection day whenever possible. There may be a delay in collection of blocked carts.
- If you have any questions, please call or check out our new on-line chat option at unicycler.com.

Extra Trash

- If you have an overloaded garbage cart or extra bags of garbage piled on top of, or alongside your cart, you may receive an automatic charge for each extra bag or can of garbage. Carts are considered overloaded if the lid will not close.
- If you have extra garbage, call our office at 766-6026 by 2:30 pm the day before your regular collection day to order extra service and avoid confusion when you receive your bill. Do not overstuff your carts as they may not empty completely.

Bulky Item Pickups

The Ratto Group - A family of companies local hauler (Petaluma Refuse & Recycling) offers Bulky Item Pick up for items that are too large for your cart.

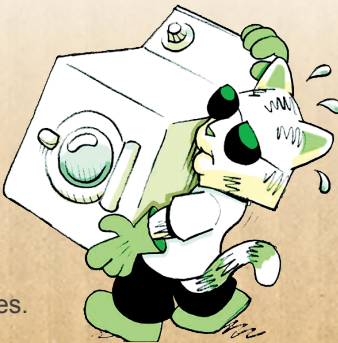
Items such as mattresses, couches, and large furniture items can be picked up for single-family residential customers. Since we use a different truck to collect these items, please call Petaluma Refuse & Recycling at 766-6026 to schedule a pick up.

We make any attempt to reduce, reuse and recycle your bulky items and keep them out of the landfill. Help us out by trying to donate your item before disposing of it.

Please Remember:

- We are unable to pick up hazardous waste. Call the HHW hotline at 795-2025 or visit unicycler.com for more information.
- Please direct reusable items to thrift or second hand stores.

*Certain items have pick-up fees. Please call or chat online at unicycler.com for details.



Single-Stream Recycling Guide

Place all recycling together inside the blue cart

Mixed Paper and Cardboard

Flatten or cut boxes to fit loosely inside cart. Place shredded paper in clear plastic or paper bag.

Yes!

- White & Colored Paper
- Office Paper & Junk Mail
- Newspaper
- Magazines & Catalogs
- Cereal & Shoe Boxes
- Corrugated Cardboard

No!

- Napkins, Towels, Tissues
- Food-Contaminated Paper
- Photographs or Blueprint Paper
- Waxed Cardboard or Paper



Milk Cartons and Juice/Rice/Soy Boxes

Remove straws. Empty before recycling.

Yes!

- Milk Cartons
- Drink Boxes

No!

- Plastic-Lined Cartons
- Straws or Pop Tops



Glass Bottles & Jars

Empty before recycling. Leave caps screwed on.

Yes!

- Clear & Colored Glass
- Food & Beverage Jars

No!

- Window or Mirror Glass
- Ceramic, Dishes or Stemware
- Loose Caps less than 4"



Plastic Containers

Wash & squash. Empty before recycling. Leave caps screwed on.

Yes!

- Plastic Containers
- Milk & Water Jugs
- Soda & Juice Bottles
- Yogurt & Deli Tubs
- Consolidated Plastic Bags
- Rigid Plastics

No!

- Loose Caps less than 4"
- Styrofoam



Metal Cans

Wash & squash, leave labels on. Empty before recycling.

Yes!

- Aluminum Cans
- Steel & Tin Cans
- Bimetal Cans
- Empty Paint/ Aerosol Cans

No!

- Plastic Caps
- Styrofoam
- Loose Caps less than 4"



Our "Green Family" - Partners in Food Waste Recycling

Our "Green Family" consists of businesses in our community who currently take advantage of our Food Waste Recycling program. Please support and thank them for making every effort to reduce our local footprint.



Want to join our "Green Family"?
Email now to GreenFamily@unicycler.com

TOXICS DISPOSAL IN SONOMA COUNTY

SERVICE OPTIONS FOR RESIDENTS

Household Toxics Facility

The Household Toxics Facility is open every week for free drop-off of toxics from Sonoma County residents.

Appointment: Not required

Hours: Thursday, Friday & Saturday 7:30 am-2:30 pm

Location: Central Disposal Site (Bldg. 5) 500 Meham Rd., Petaluma

Community Toxics Collections

Every week there is a toxics collection somewhere in Sonoma County. Bring your ID to prove residency.

Appointment required: Call 795-2025 option 3 or toll-free 1-877-747-1870

or email toxicsdisposal@cleanharbors.com

Hours: Tuesdays 4-8 pm

Toxic Rover Pickup Service

Have your toxics picked up at your home. Services are provided on a first-come-first-serve basis.

Fee: \$50/pickup (limit 440 pounds). Limited free pickup available for seniors over 80 years of age and housebound residents.

Appointment required: Call 795-2025 option 4 or toll-free 1-877-747-1870

or email toxicsdisposal@cleanharbors.com

Hours: Wednesdays limited appointments

2015 Community Toxics Collections schedule

March 2015

3 Rohnert Park

10 Larkfield

17 Monte Rio

24 Santa Rosa, NW

31 Sebastopol

May 2015

5 Oakmont

12 Guerneville

19 Larkfield

26 Boyes Hot Springs

June 2015

2 Santa Rosa, NW

9 Healdsburg

16 Kenwood

23 Bodega Bay

30 Petaluma

July 2015

7 Sonoma

14 Cloverdale

21 Santa Rosa, SE

28 Rohnert Park

August 2015

4 Windsor

11 Sebastopol

18 Glen Ellen

25 Oakmont

Locations of Community Toxics Collections will be provided when you schedule your appointment. Call at least 24 hours prior to the collection event. For a complete schedule, visit www.recyclenow.org

Transportation & packing: State transportation laws limit each vehicle to a maximum of 15 gallons of liquid (with a maximum of 5 gallons per container) or 125 pounds of solid material. Never mix chemicals. Place in sealed containers in the trunk, packed to prevent spills. Syringes/needles must be in a sealed and labeled approved container. Not accepted: Explosives or ammunition. Radioactive materials. Electronics. Biological wastes (except syringes). Controlled substances.

SERVICE OPTIONS FOR BUSINESSES

Household Toxics Facility

Located at the Central Disposal Site, the Household Toxics Facility is open for drop-off of hazardous waste from qualified Sonoma County businesses.

Appointment required: Call 795-2025 option 2 or toll-free 1-877-747-1870 or email toxicsdisposal@cleanharbors.com

Forms & fees: Paperwork required. Download forms at www.recyclenow.org. \$25 processing fee plus disposal fees based on type and quantity of waste.

Hours: Tuesdays & Wednesdays 7:30 am-2:30 pm

Location: Central Disposal Site (Bldg. 5) at 500 Meham Rd., Petaluma

Community Toxics Collections

Every week there is a toxics collection somewhere in Sonoma County. Space may be limited for business appointments and is based on availability.

Appointment required: Call 795-2025 option 2 or toll-free 1-877-747-1870

Forms & fees: Paperwork required. Download forms at www.recyclenow.org. \$25 processing fee plus disposal fees based on type and quantity of waste.

Hours: Tuesdays 4-8 pm for a complete schedule of Community Toxics Collections, visit www.recyclenow.org



The Household Hazardous Waste Program is funded by the Sonoma County Waste Management Agency.

www.recyclenow.org Eco-Desk 565-3375

