

Petaluma Recycling News



Part of **The Ratto Group**
A Family of Companies

Fall 2016

unicycler.com

Contact Us:

Petaluma Refuse & Recycling

PO Box 14609
Santa Rosa, CA 95402
(707) 766-6026

Phone Hours

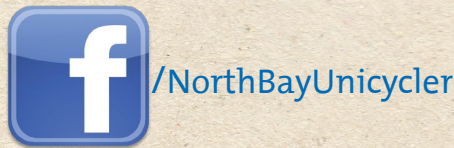
Monday - Friday 7am-6pm
Saturday - Sunday 7am-3pm

Office Address

1309 Dynamic St.,
Petaluma, CA 94954

Chat Live
Now!

Online Chat at:
unicycler.com



Upcoming Events:

Petaluma Fall Curbside Cleanup
October 3-7

December 26th - January 16th
Christmas Tree Pickup

Curbside Collection:

December 26th - January 2nd

Place whole trees at the curb on regularly scheduled collection day. Trees over 6ft must be cut in half.

Drop-off Location:

December 26th -January 16th

Daily 8am-5pm at the Sonoma-Marin Fairgrounds

175 Fairgrounds Dr.

General Information:

-General Holiday Collection: Christmas and New Years fall on a Sunday so there will be not change in service.

-Green Waste Cart Collection: Trees are accepted in Green Waste Carts at **ANYTIME**. Trees **MUST** be cut to fit inside cart with the lid closed. Flocked trees are **NOT** accepted

-All lights, tinsel, ornaments and stands **MUST** be removed prior to any collection

-Flocked trees are considered trash and must either fit in the trash cart or be taken to a transfer station. Flocked trees will NOT be collected by any curbside, green cart or drop-off program.



GREEN WASTE JUST GOT GREENER

Your residential green can is perfect for yard trimmings AND food scraps.

Facts about food waste disposal in Sonoma County:

- Waste characterization studies show that 36% of residential garbage is organics (vegetative & non-vegetative) – a resource that could be re-used instead of landfilled
- Sending organics to the landfill increases dirty landfill gas, wastes potential resources, reduces diversion and potentially increases greenhouse gas emissions
- Residential customers are now able to add food scraps to the green bin
- Collect items for the green can in a biodegradable paper bag or a convenient kitchen countertop bin (available for purchase, \$6 from The Ratto Group)
- Commercial customers can enroll in the company's commercial food waste program, and businesses generating more that 8 cubic yards of food waste are required to enroll and divert by law
- Without an available local diversion option, residential and commercial food waste is hauled out of Sonoma County and recovered through composting

What's compostable

Qué se puede compostar

Fruit, vegetables & peelings
Frutas, vegetales & sus peladuras

Pasta, rice, bread, eggshells, tea bags, coffee grounds & filters
Pasta, arroz, pan, cascarones de huevo, bolitas de té, granos de café & filtros

Meat, cheese, bones & seafood including shells
Carne, queso, huesos y los mariscos incluyendo las conchas/cascarones

Food leftovers (packaging removed)
Restos de comida (retirando el empaque)

Non-coated paper products such as paper plates & food-soiled napkins (small amounts okay)
Los productos de papel no recubiertos como platos de papel y servilletas manchadas con comida (en pequeñas cantidades)

Leaves, weeds, grass, landscape prunings (maximum 4 inches in diameter by 2 feet long) & wood ashes (cold)
Hojas, hierbas, pajas, podadoras (con un máximo de 4 pulgadas de diámetro por 2 ft. de largo) Cenizas de madera (frías)

Keep your cart clean by wrapping your scraps in a brown paper bag or newspaper.
Mantenga su contenedor limpio envolviendo los desperdicios de comida en una bolsa de papel o en papel periódico.

No trash or recycling
No basura o reciclaje

No plastic bags including compostable plastics
No bolsas de plástico incluyendo plásticos biodegradables

No garbage or recycling
No basura o reciclaje

No paper towels used for personal hygiene or cleaning
No toallas de papel utilizadas para la higiene personal o para limpiar

No Styrofoam™
No espuma de poliestireno

No poison oak, cactus, palm fronds, pampas grass, bamboo, dirt, rocks, sod or tree stumps
No líquen, cactus, palmas, acacia, caña de azúcar, bambú, arena, piedras, ramas de pasto o troncos de árbol

No liquid waste, oil or grease
No residuos líquidos, aceite o grasa

No hazardous waste
No residuos peligrosos

No dimensional lumber or treated wood
No madera dimensionada o madera tratada

No waxed paper products
No papeles encerados

North Bay Corporation/Redwood Empire Disposal
800-243-0291 www.unicycler.com

SONOMA COUNTY Waste Management Agency

Eco-Desk 565-3375
www.recyclenow.org

For a full, printable version please visit recyclenow.org

Yard Waste Guidelines

- Place all grass cuttings, leaves & weeds, tree & shrubbery trimmings, berry bushes and other yard & garden waste inside your green rolling cart, also referred to as your yard waste cart. Branches under 4 inches in diameter and less than 2 feet long are accepted.
- Also accepted in the yard waste carts, are all food scraps such as fruits and vegetables (including pits and nuts), coffee grounds with filters, tea bags, kitchen prep scraps, bread, grains, pasta, baked goods, eggs, eggshells and non-coated paper products such as paper plates and napkins.
- Place your yard waste cart at the curb allowing at least three feet of space between containers.
- All green waste must be in the container. Loose material will not be collected.
- Do not put yard waste in plastic bags.
- Please put your garbage in the correct can. Contamination can lead to higher costs and higher prices in garbage service.

Petaluma Refuse & Recycling

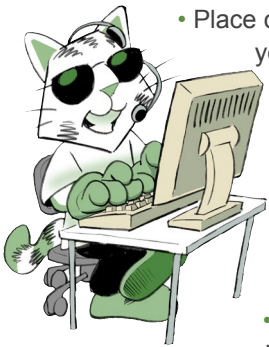
PO Box 14609
Santa Rosa, CA 95402

Tel (707) 766-6026
Tel (800) 243-0291
Fax (707) 586-5543



Guidelines & Reminders from Customer Service

To help us provide the best service to you, please observe the following:



- Place carts at the road edge the night prior to your service day.
- Please leave 3 feet between garbage, recycling & yard waste carts.
- Place garbage loosely in your cart. Carts that are overstuffed or have material jammed into them may not empty completely.
- Please remove your containers from the road edge as soon after they have been serviced as is practical.

- Be sure all items are contained inside your carts. Carts that have items sticking out of them or have material piled on top may not be emptied or may receive additional charges.
- You may opt to set out recycle and yard waste carts only when full if you choose.

For everyone's safety and convenience, we request that you pay special attention to the following:

- Do not place carts within three feet of vehicles, mailboxes, fire hydrants, other obstacles or personal property.
- Collection vehicles need 14' overhead clearance. Carts should not be placed in an area with overhangs, trees or other obstacles.
- Please park your car in your driveway the night before your collection day whenever possible. There may be a delay in collection of blocked carts.
- If you have any questions, please call or check out our new on-line chat option at unicycler.com.

Extra Trash

- If you have an overloaded garbage cart or extra bags of garbage piled on top of, or alongside your cart, you may receive an automatic charge for each extra bag or can of garbage. Carts are considered overloaded if the lid will not close.
- If you have extra garbage, call our office at 766-6026 by 2:30 pm the day before your regular collection day to order extra service and avoid confusion when you receive your bill. Do not overstuff your carts as they may not empty completely.

Bulky Item Pickups

The Ratto Group - A family of companies local hauler (Petaluma Refuse & Recycling) offers Bulky Item Pick up for items that are too large for your cart.

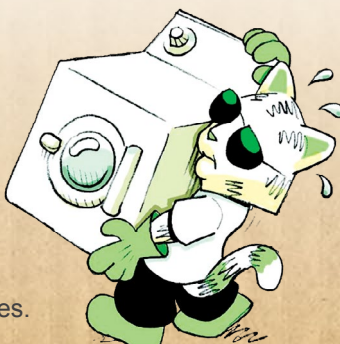
Items such as mattresses, couches, and large furniture items can be picked up for single-family residential customers. Since we use a different truck to collect these items, please call Petaluma Refuse & Recycling at 766-6026 to schedule a pick up.

We make any attempt to reduce, reuse and recycle your bulky items and keep them out of the landfill. Help us out by trying to donate your item before disposing of it.

Please Remember:

- We are unable to pick up hazardous waste. Call the HHW hotline at 795-2025 or visit unicycler.com for more information.
- Please direct reusable items to thrift or second hand stores.

*Certain items have pick-up fees. Please call or chat online at unicycler.com for details.



Cut Out This Handy Recycle Guide



ACCEPTED FOR RECYCLING ONLY

ACEPTADO PARA RECICLAR SOLAMENTE

Metal & Aluminum Cans
Latás de Metal y Aluminio

Glass Bottles & Jars
Jarras y Botellas de Vidrio

Plastic Bottles (with lid)
Botellas de Plástico (con Tapa)

Empty Household Plastic Containers & Rigid Plastic Items (No Clamshells)
Recipientes Para el Hogar de Plástico Vacíos Así Como los Artículos de Plástico Rígido (No Envases Para Empaque de Poliéster Tipo Alméjra)

Paper (No Shredded Paper), Paper Bags, Cereal Boxes, Cardboard (Flattened)
Papel (No Papel Picado), Bolsas del Papel, Cajas de Cereales, Carton (Aplaste Todas las Cajas),

Soy/Rice Milk & Juice Boxes
Cartones de Leche, de Soya/Arroz y Cajas de Jugo

Newspaper, Magazines, Office Paper, Catalogs & Telephone Books
Perifoneos, Revistas, Papel de Oficina, Catálogos y Guías Telefónicas

No Trash
No Basura

Questions? Not sure which bin?
Preguntas? ¿No estoy seguro que contenedor?

unicycler.com

TOXICS DISPOSAL IN SONOMA COUNTY

SERVICE OPTIONS FOR RESIDENTS

Household Toxics Facility

The Household Toxics Facility is open every week for free drop-off of toxics from Sonoma County residents.

Appointment: Not required

Hours: Thursday, Friday & Saturday 7:30 am-2:30 pm

Location: Central Disposal Site (Bldg. 5) 500 Meham Rd., Petaluma

Community Toxics Collections

Every week there is a toxics collection somewhere in Sonoma County. Bring your ID to prove residency.

Appointment: Call 795-2025 option 3 or toll-free 1-877-747-1870 or email toxicsdisposal@cleanharbors.com

Hours: Tuesdays 4-8 pm

Toxic Rover Pickup Service
Have your toxics picked up at your home. Services are provided on a first-come-first-served basis.

Fee: \$50/pickup (limit 440 pounds). Limited free pickup available for seniors over 80 years of age and housebound residents.

Appointment required: Call 795-2025 option 4 or toll-free 1-877-747-1870 or email toxicsdisposal@cleanharbors.com

Hours: Wednesdays limited appointments

Community Toxics Collections schedule

September 2016	November 2016	January 2017
6 Oakmont	1 Guerneville	10 Santa Rosa, NW
13 Santa Rosa, NW	8 Windsor	17 Sonoma
20 Healdsburg	15 Oakmont	24 Cloverdale
27 Sonoma	29 Santa Rosa, NE	31 Healdsburg

October 2016	December 2016	February 2017
4 Cloverdale	6 Sebastopol	7 Rohnert Park
11 Larkfield	13 Kenwood	14 Monte Rio
18 Petaluma		21 Oakmont
25 Santa Rosa, SE		28 Rincon Valley

Locations of Community Toxics Collections will be provided when you schedule your appointment. Call at least 24 hours prior to the collection event. **For a complete schedule, visit www.recyclenow.org**

Transportation & packing: State transportation laws limit each vehicle to a maximum of 15 gallons of liquid (with a maximum of 5 gallons per container) or 125 pounds of solid material. Never mix chemicals. Place in sealed containers in the trunk, packed to prevent spills. Syringes/needles must be in a sealed and labeled approved container. **Not accepted:** Explosives or ammunition. Radioactive materials. Electronics. Biological wastes (except syringes). Controlled substances.

SERVICE OPTIONS FOR BUSINESSES

Household Toxics Facility

Located at the Central Disposal Site, the Household Toxics Facility is open for drop-off of hazardous waste from qualified Sonoma County businesses.

Appointment required: Call 795-2025 option 2 or toll-free 1-877-747-1870 or email toxicsdisposal@cleanharbors.com

Forms & fees: Paperwork required. Download forms at www.recyclenow.org. \$25 processing fee plus disposal fees based on type and quantity of waste.

Hours: Tuesdays & Wednesdays 7:30 am-2:30 pm

Location: Central Disposal Site (Bldg. 5) at 500 Meham Rd., Petaluma

Community Toxics Collections

Every week there is a toxics collection somewhere in Sonoma County. Space may be limited for business appointments and is based on availability.

Appointment required: Call 795-2025 option 2 or toll-free 1-877-747-1870

Forms & fees: Paperwork required. Download forms at www.recyclenow.org. \$25 processing fee plus disposal fees based on type and quantity of waste.

Hours: Tuesdays 4-8 pm for a complete schedule of Community Toxics Collections, visit www.recyclenow.org

SONOMA COUNTY 2016 RECYCLING GUIDE

Get info to reduce your waste. Americans waste 25% of the food they purchase.

Food. Too good to waste.
On average, each Sonoma County household disposes of 190 pounds of food in the household garbage per year.

190 pounds

565-DESK(3375)
WWW.RECYCLENOW.ORG