

# Rohnert Park Recycling News



## The Ratto Group

*A family of companies*



Spring 2017

[unicycler.com](http://unicycler.com)

**Contact Us:**  
**Rohnert Park Disposal**  
(707) 586-2283



Online Chat at:  
**unicycler.com**

### Phone Hours

Monday - Friday 7am-6pm  
Saturday - Sunday 7am-3pm



/NorthBayUnicycler

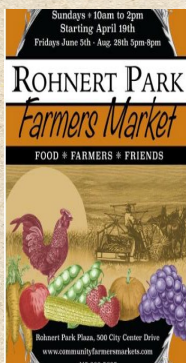
No need to stay on hold any longer. Simply go to [unicycler.com](http://unicycler.com) and chat online with a friendly customer service agent now!

## Upcoming Events:

**May 8th - May 12th:**

**Rohnert Park Spring Curbside Clean-up**

**May 5th**



**May 10th**



**June 24th - 25th**

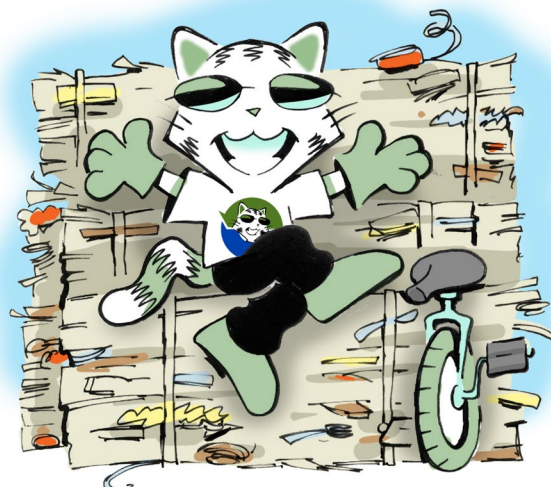


**Aug. 3rd-Aug. 13th:**



## LOOKING TOWARD THE FUTURE

The recycling industry is an ever-changing landscape of new ideas and advancing technology. To keep up with the changing climate companies like The Ratto Group need to be ready to make changes both big and small to capture as many recyclable materials as possible, and reduce waste in Sonoma County. We have come a long way from the three crates at the curb containing paper, aluminum, and glass. With the advent of single stream recycling, we have seen a huge increase in the materials diverted from landfills and participation has been brought to mainstream levels where recycling has become as common as brushing your teeth. To effectively recycle all of the mixed materials residents can now place in their blue carts, those materials must be sorted and prepared for shipping to manufacturers who can give them a new life.



One big change that is currently happening at our facilities on Standish Avenue in Santa Rosa is a complete overhaul of our Materials Recovery Facility (MRF). These sorting facilities are essential to maintaining the convenience and effectiveness of single-stream recycling. Our first MRF was built in 2002 and at the time it was the latest and greatest for sorting recycling and preparing the material for market. Technology has advanced since then, as has the variety of material that can be accepted for recycling.

Currently we operate 2 MRFs in Santa Rosa. One at 3417 Standish which was opened in 2002 and another right across the street at 3400 which was acquired when we took over the facility from Waste Management in 2008. In December 2016, the 3417 site was shut down to begin phase 1 of what will be a two-phase project to improve recycling in Sonoma County. The entire yard has been re-paved and new concrete surfaces have been placed in the receiving and processing areas inside the facility. We are installing a gray water system for proper treatment of run off when the materials are brought in to the facility. The building itself was also in need of improvements and repairs which are also being completed. We are working with the county to obtain new permits which will allow for effective sorting well into the future. A combination of new equipment and rebuilding existing equipment will allow us further sorting of materials and reduce residuals (materials that cannot be recycled and must be taken to a landfill).

According to General Manager Rick Powell the first phase of this project will be completed in the summer of 2017. Once completed, our second MRF at 3400 will be shut down for a similar remodel. The entire project is expected to be completed by the end of 2017 with a price tag of over \$10 million dollars.

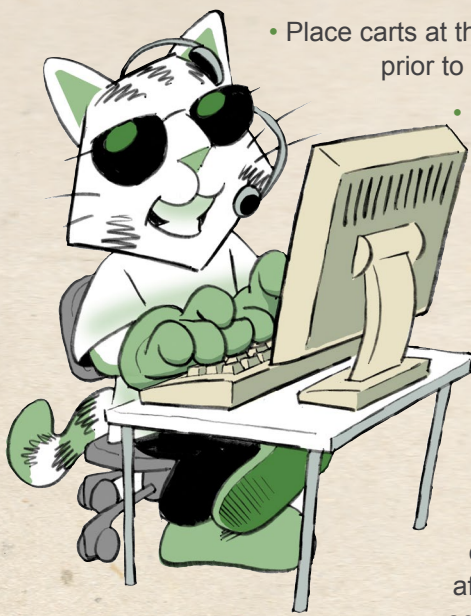
In addition to improved sorting capabilities we are also in the process of replacing trucks in our fleet. We have also changed the entire fleet to Neste Renewable Diesel. Neste is a pioneer and world leader in renewable fuels. Their renewable diesel is 100% sustainable produced from waste fats, residues, and vegetable oils. The change to this fuel reduces greenhouse gas emissions by up to 80%.

The Ratto Group has served Sonoma County for decades. We've been privileged to be a part of the efforts to reduce greenhouse gases, and solid waste disposal. We are confident with these new innovations; our community will continue on to the future with a culture of ecologically-minded values that is part of what makes this such a special place to live.



## Guidelines & Reminders from Customer Service

To help us provide the best service to you, please observe the following:



- Place carts at the road edge the night prior to your service day.
  - Please leave 3 feet between garbage, recycling & yard waste carts.
  - Place garbage loosely in your cart. Carts that are overstuffed or have material jammed into them may not empty completely.
  - Please remove your containers from the road edge as soon as possible after they have been serviced as is practical.
- Be sure all items are contained inside your carts. Carts that have items sticking out of them or have material piled on top may not be emptied or may receive additional charges.
  - You may opt to set out recycle and yard waste carts only when full if you choose.

For everyone's safety and convenience, we request that you pay special attention to the following:

- Do not place carts within three feet of vehicles, mailboxes, fire hydrants, other obstacles or personal property.
- Collection vehicles need 14' overhead clearance. Carts should not be placed in an area with overhangs, trees or other obstacles.
- Please park your car in your driveway the night before your collection day whenever possible. There may be a delay in collection of blocked carts.
- If you have any questions, please call or check out our new on-line chat option at [unicycler.com](http://unicycler.com).

## Extra Trash

- If you have an overloaded garbage cart or extra bags of garbage piled on top of, or alongside your cart, you may receive an automatic charge for each extra bag or can of garbage. Carts are considered overloaded if the lid will not close.
- If you have extra garbage, call our office at 586-2283 by 2:30 pm the day before your regular collection day to order extra service and avoid confusion when you receive your bill. Do not overstuff your carts as they may not empty completely.

## Bulky Item Pickups

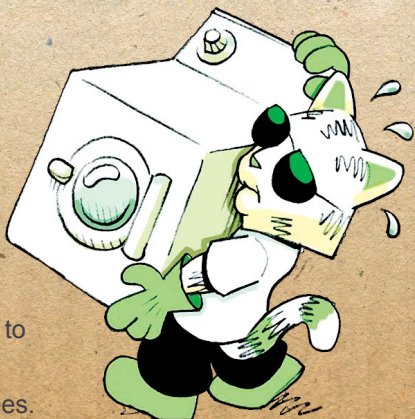
The Ratto Group - *A family of companies* local hauler (Rohnert Park Disposal) offers Bulky Item Pick up for items that are too large for your cart.

Items such as mattresses, couches, and large furniture items can be picked up for a fee for single-family residential customers. Call Rohnert Park Disposal at 586-2283 to schedule a pick up.

We make any attempt to reduce, reuse and recycle your bulky items and keep them out of the landfill. Help us out by trying to donate your item before disposing of it.

### Please Remember:

- We are unable to pick up hazardous waste. Call the HHW hotline at 795-2025 or visit [unicycler.com](http://unicycler.com) for more information.
  - Please direct reusable items to thrift or second hand stores.
- \*Certain items have pick-up fees. Please call or chat online at [unicycler.com](http://unicycler.com) for details.



## Ask the Unicycler

*Dear Unicycler,*

*We are having an office debate on whether plastic bags are recyclable in our recycling containers at work and or at home? Can you help us clear this up?*

*Signed,*

*Polly Ethylene*

Dear Polly:

Plastic bags are one of the most visible forms of litter we see around Sonoma County. They are lightweight plastic which never breaks down and blows away easily. This is one of the many reasons why they were banned in Sonoma County in 2014. They are also next to impossible to recycle in a single-stream environment which is why we cannot accept them in the blue can you use at home or the blue bin you use in your business. Plastic bags mixed with other recyclables become a contaminate. Empty bags are often filled with moisture and other contaminants in the truck or in your container. They also get bound up in our sorting equipment and result in down time when they have to be removed, or even damage to the equipment itself.

Here's a few ways on how you can help keep plastic bags out of your waste stream:

Buy reusable bags for friends and family members as a gift. Encourage your co-workers, family and friends to avoid plastic bags.

Please keep plastic bags out of your recycling bin or cart

- Place recyclable materials in recycle containers loose

- If you have a lot of plastic bags, thrift stores are often in need of clean plastic bags or some local grocery stores still accept them for recycling

. Questions on what is accepted in your recycle container? Please refer to the recycle guide on the next page.

**Have a recycling or environmental question? Email us at [greenteam@unicycler.com](mailto:greenteam@unicycler.com). Or, like us on Facebook and post your questions there.**

## Rohnert Park Curbside Cleanup May 8th - May 12th

Rohnert Park residents may place extra garbage (contained in bags or boxes) at the curb for collection on their regular collection day during this week. Please keep E-waste items separate from garbage. Only Rohnert Park residential customers and multi-family complexes may participate in the cleanup. Multifamily complexes must request cleanup service by scheduling service no later than Friday May 5th. Businesses and property managers may not participate. Call Rohnert Park Disposal at 586-2283 to schedule and for full descriptions of what is acceptable to be removed. Residents are limited to two cubic yards of material at the curb--equivalent of 14 bags, boxes or bins or one bulky item plus seven bags or boxes or 2 bulky items.

### Bulky Items:

Large furniture requires an appointment. There is a \$20 charge for mattresses (box springs included). Payment is due at time of pickup. Call Rohnert Park Disposal 586-2283 before Friday, May 5, 2016 for an appointment.

### E-Waste Items:

Household appliances can be picked up Call Rohnert Park Disposal 586-2283 to make an appointment.

E-waste items include:

- Televisions & monitors (tube, plasma, LCD or projection)
- VCR/DVD players, printers, household appliances and \*microwaves
- Scrap metal, bicycles, BBQs, washers, dryers, hot water heater and \*refrigerators

**\*Fee is applied for Freon and/or microwave disposal.**

### Prohibited Items:

The following items are not accepted. They will be tagged and left at the curb.

- Dirt, rocks, concrete, tires, stumps.
- Pressure treated or chemically treated wood/lumber.
- Lawnmowers, propane tanks, batteries
- Hazardous waste such as paint, motor oil, chemicals, cleaners, pesticides, herbicides, & thinners

## Yard Waste Guidelines

- Place all grass cuttings, leaves & weeds, tree & shrubbery trimmings, berry bushes and other yard & garden waste inside your green rolling cart, also referred to as your yard waste cart. Branches under 4 inches in diameter and less than 2 feet long are accepted.
- Also accepted in the yard waste carts are all food scraps such as fruits and vegetables (including pits and nuts), coffee grounds with filters, tea bags, kitchen prep scraps, bread, grains, pasta, baked goods, eggs, eggshells and non-coated paper products such as paper plates shredded paper and napkins.
- Place your yard waste cart at the curb allowing at least three feet of space between containers.
- All green waste must be in the container. Loose material will not be collected.
- Do not put yard waste in plastic bags.
- Please put your garbage in the correct can. Contamination can lead to higher costs and higher prices in garbage service.

## Keep Your Green Clean!

Keep your cart clean by wrapping your food scraps in a brown paper bag or newspaper. The following materials are banned from your yard waste cart.

- garbage • sod or dirt • rock • gravel or concrete • lumber • playground bark • plastic bags
- nursery pots or plastic • pet waste • palm fronds • processed or treated wood products
- bamboo • cups, packaging & straws • liquid waste & ice • plastics • take-out containers
- compostable plastics (even bio-bags) • synthetic corks • waxed cardboard • poison oak
- Sudden Oak Death infested material • BBQ ashes • tree stumps



✂ Cut Out This Handy Recycle Guide ✂

# ACCEPTED FOR RECYCLING ONLY

## ACEPTADO PARA RECICLAR SOLAMENTE



✓ **Metal & Aluminum Cans**  
Latas de Metal y Aluminio



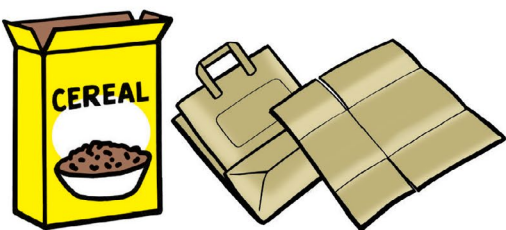
✓ **Glass Bottles & Jars**  
Jarras y Botellas de Vidrio



✓ **Plastic Bottles (with lid)**  
Botellas de Plástico (con Tapa)



✓ **Empty Household Plastic Containers & Rigid Plastic Items**  
Recipientes Para el Hogar de Plástico Vacíos Así Como los Artículos de Plástico Rígido (No Envases Para Empaque de Poliester Tipo Almeja)



✓ **Paper (No Shredded Paper), Paper Bags, Cereal Boxes, Cardboard (Flattened)**  
Papel (No Papel Picado), Bolsas del Papel, Cajas de Cereales, Carton (Aplaste Todas las Cajas),



✓ **Milk Cartons, Soy/Rice Milk & Juice Boxes**  
Cartones de Leche, de Soya/Arroz y Cajas de Jugo



✓ **Newspaper, Magazines, Office Paper, Catalogs & Telephone Books**  
Periódicos, Revistas, Papel de Oficina, Catálogos y Guías Telefónicas

## Questions? Not sure which bin?

¿Preguntas? ¿No estoy seguro que contenedor?

**unicycler.com**

**No Trash**  
**No Basura**

TRGHH12X91015

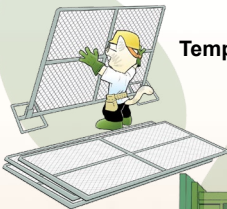
## Unicycler Offers Full Construction Services!

The Unicycler has been busy as of late. We are proud to announce that the Ratto Group is now offering full construction services for all of your disposal needs. By "Construction Services" we mean just about everything a general contractor would need to get a building project going. This also includes disposal of the construction and demolition materials. The majority of this is diverted from the landfill. Exchanges of debris boxes can even be done same day. We now offer a full array of the following:

### Home & Business Cleanouts



### Temporary Fencing



### Recycling & Debris Boxes



### Private Street Sweeping



## Why is it Important to Recycle Used Motor Oil and Oil Filters?

- Used oil can contain contaminants such as lead, magnesium, copper, zinc, chromium, arsenic, cadmium and chlorinated compounds.
- Don't pour used motor oil down the drain or on the ground. One gallon of used motor oil can pollute one million gallons of drinking water.
- Used motor oil represents more than 40 percent of the oil pollution in our country's waterways.
- Used oil is easy to recycle. It can be re-refined into usable motor oil.
- Recycle your used oil filter. Even after draining, used oil filters contain about 10 ounces of used oil, as well as one pound of reusable steel.
- All the used oil filters sold annually in California could be recycled into 67 million pounds of steel, enough to build three large football stadiums!

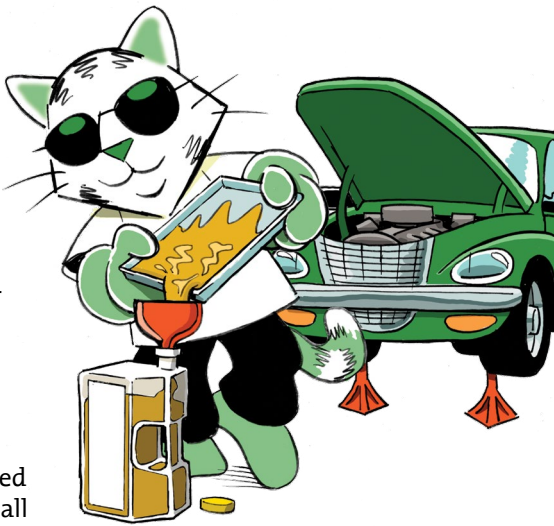
Here in Sonoma County we recycle 3,800 gallons of oil per year. Recycling used oil and filters reduces our dependence on foreign oil, saves valuable resources, protects the health of our families, and is the only legal way to dispose of them! You haven't finished changing your oil until you've taken this last important step. There are convenient options for recycling used oil and filters in Sonoma County:

### Curbside recycling service for used motor oil and filters!

Call Customer Service at 586-2283 or 800-243-0291 to request a special container and zip-lock filter bag. Then call our office to request a pickup. Place oil and filter at the curb next to (not in) your recycling cart for pickup on your regular collection day. The driver will leave a replacement container when your full one is collected.

### Drop-off Recycling Locations!

There are many locations in Sonoma County that accept motor oil for recycling. Most also take filters. To find a list of locations nearest you, visit [http://recyclenow.org/toxics/motor\\_oil\\_dropoff.asp](http://recyclenow.org/toxics/motor_oil_dropoff.asp). Or check your Sonoma County Recycling Guide in the AT&T Phone Book. Find it behind the tab under Recycling in the AT&T Yellow Pages.



**Chat Live**  
**Now!**

No need to spend your time on the phone. Simply go to [unicycler.com](http://unicycler.com) during business hours and click on the "Chat Now" option on the right side. A Customer Service Agent will be able to handle whatever situation you may have. Or, if it's past business hours, click on "Leave a message" and we'll get back to you within 24 hours.

Give us a call at 707-585-5222 or visit us at [www.unicycler.com](http://www.unicycler.com) for more information





### Rohnert Park Disposal

PO Box 1916  
Santa Rosa, CA 95402

Tel (707) 586-2283  
Tel (800) 243-0291  
Fax (707) 586-5543

## Businesses are doing their part. And we're here to help!

To comply with State law, businesses in Sonoma County have begun sorting their Organic Waste into two separate containers; Yard Waste and Food Waste.

If you receive garbage service, you may qualify for help in complying with the law. Sonoma County Waste Management Agency and The Ratto Group offer assistance.

For more information:

[http://recyclenow.org/business/commercial\\_organics.asp](http://recyclenow.org/business/commercial_organics.asp)  
or call 707-585-0291 or 707-565-2413



**Redwood Empire Disposal**  
unicycler.com



### AB 1826: Mandatory Organics Recycling Law

Starting in 2016, California state law requires businesses and public entities including schools, healthcare facilities, restaurants, government buildings, and other establishments to begin separating food waste and organics for recycling.

This law helps California achieve its aggressive recycling and greenhouse gas emission reduction goals, and address climate change.

To help businesses recycle and comply with State laws, the County has established a food waste recycling program at no additional cost to qualified customers receiving garbage service.

**Food Waste:**  
Vegetables  
Fruit  
Meat and bones  
Food-soiled paper

Call us to get started



**Yard Debris:**  
Leaves  
Branches  
Lumber under 2"  
Lawn clippings

## TOXICS DISPOSAL IN SONOMA COUNTY

### SERVICE OPTIONS FOR RESIDENTS

#### Household Toxics Facility

The Household Toxics Facility is open every week for **free drop-off** of toxics from Sonoma County residents.

**Appointment:** Not required

**Hours:** **Thursday, Friday & Saturday 7:30 am–2:30 pm**

**Location:** **Central Disposal Site (Bldg. 5) 500 Mecham Rd., Petaluma**

#### Community Toxics Collections

Every week there is a toxics collection somewhere in Sonoma County. Bring your ID to prove residency.

**Appointment required:** Call **795-2025 option 3** or toll-free **1-877-747-1870** or email [toxicsdisposal@cleanharbors.com](mailto:toxicsdisposal@cleanharbors.com)

**Hours:** **Tuesdays 4-8 pm**

#### Toxic Rover Pickup Service

Have your toxics picked up at your home. Services are provided on a first-come-first-serve basis.

**Fee:** \$50/pickup (limit 440 pounds). Limited free pickup available for seniors over 80 years of age and housebound residents.

**Appointment required:** Call **795-2025 option 4** or toll-free **1-877-747-1870** or email [toxicsdisposal@cleanharbors.com](mailto:toxicsdisposal@cleanharbors.com)

**Hours:** **Wednesdays** limited appointments

#### Community Toxics Collections schedule

##### April 2017

4 Windsor  
11 Sonoma  
18 Cloverdale  
25 Santa Rosa, E

##### May 2017

2 Guerneville  
9 Oakmont  
16 Healdsburg  
23 Boyes Hot Springs  
30 Larkfield

**Locations of Community Toxics Collections will be provided when you schedule your appointment.** Call at least 24 hours prior to the collection event. **For a complete schedule, visit [www.recyclenow.org](http://www.recyclenow.org)**

**Transportation & packing:** State transportation laws limit each vehicle to a maximum of 15 gallons of liquid (with a maximum of 5 gallons per container) or 125 pounds of solid material • Never mix chemicals • Place in sealed containers in the trunk, packed to prevent spills • Syringes/needles must be in a sealed and labeled approved container. **Not accepted:** Explosives or ammunition • Radioactive materials • Electronics • Biological wastes (except syringes) • Controlled substances.

##### June 2017

6 Bodega Bay  
13 Santa Rosa, W  
20 Petaluma  
27 Kenwood

##### July 2017

11 Cloverdale  
18 Santa Rosa, NE  
25 Sonoma



### SERVICE OPTIONS FOR BUSINESSES

#### Household Toxics Facility

Located at the Central Disposal Site, the Household Toxics Facility is open for drop-off of hazardous waste from qualified Sonoma County businesses.

**Appointment required:** Call **795-2025 option 2** or toll-free **1-877-747-1870** or email [toxicsdisposal@cleanharbors.com](mailto:toxicsdisposal@cleanharbors.com)

**Forms & fees:** Paperwork required. Download forms at [www.recyclenow.org](http://www.recyclenow.org). \$25 processing fee plus disposal fees based on type and quantity of waste.

**Hours:** **Tuesdays & Wednesdays 7:30 am–2:30 pm**

**Location:** **Central Disposal Site (Bldg. 5) at 500 Mecham Rd., Petaluma**

#### Community Toxics Collections

Every week there is a toxics collection somewhere in Sonoma County. Space may be limited for business appointments and is based on availability.

**Appointment required:** Call **795-2025 option 2** or toll-free **1-877-747-1870**

**Forms & fees:** Paperwork required. Download forms at [www.recyclenow.org](http://www.recyclenow.org). \$25 processing fee plus disposal fees based on type and quantity of waste.

**Hours:** **Tuesdays 4-8 pm** for a complete schedule of Community Toxics Collections, visit [www.recyclenow.org](http://www.recyclenow.org)

