

West Marin Recycling News



Redwood Empire Disposal

The Ratto Group
A family of companies

Spring 2017

unicycler.com

Contact Us:

Redwood Empire Disposal

PO Box 14609
Santa Rosa, CA 95402
(800) 243-0291

Phone Hours

Monday - Friday 7am-6pm
Saturday - Sunday 7am-3pm

Office Address

3400 Standish Ave.
Santa Rosa, CA 95407



Online Chat at:

unicycler.com



[/NorthBayUnicycler](https://www.facebook.com/NorthBayUnicycler)

Upcoming Events:

April 17th - 21st:

West Marin Cleanup

June 23rd - Nov. 3rd



Yardwaste service
has increased to
every week on your
normal curbside
garbage and recycle
service day.

ZERØWASTEMARIN

PROTECTING OUR RESOURCES TOGETHER

ZeroWasteMarin.org

Zero Waste Marin would like to pass along a few tips to help Marin County residents reduce waste.

- **Reusable Containers:** Instead of plastic or paper bags, use reusable containers to pack your family's food and beverages. Whether you are going for a hike on Mt. Tam, heading to the park for the afternoon or packing a school lunch, reusable containers are the best way to hold snacks for the trip.
- **Cloth Napkins:** Swap paper towels for cloth napkins and dishcloths both at home and in packed lunches. Cloth napkins are easy to clean and can be reused for years, and you will save money on paper towels.
- **BYOBag:** Add a reminder to bring your own reusable shopping bag to your shopping list. Simple actions like this help keep waste out of our landfills. Remember to keep a reusable shopping bag in your car for any unplanned trips.
- **"Compostable" Plastics:** Even though they claim to be biodegradable and compostable, vegetable-based "compostable" utensils, cups and bags cannot be placed in the Green Cart in Marin County. Please put them, along with paper cups with thin plastic liners, in the landfill cart. Instead, use firmware that can be washed and reused.

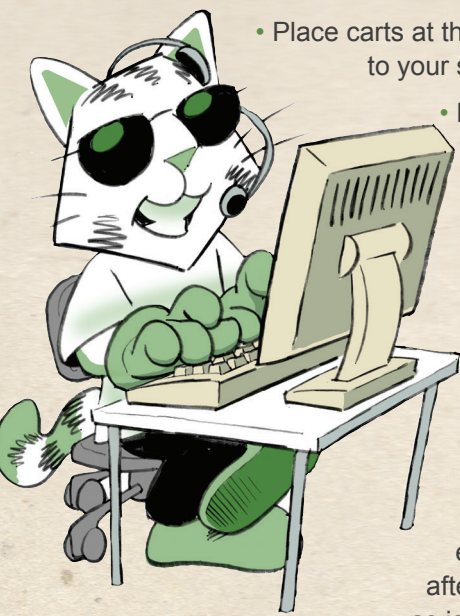
Spring is a great time of year for us all to embrace new waste reduction habits at home. Let's continue to work together to keep Marin County beautiful and thriving.

Zero Waste Marin works with cities and towns throughout Marin County to educate residents about reducing the amount of waste that goes into our local landfills. For more information, visit ZeroWasteMarin.org.



Guidelines & Reminders from Customer Service

To help us provide the best service to you, please observe the following:



- Place carts at the road edge the night prior to your service day.
- Please leave 3 feet between garbage, recycling & yard waste carts.
- Place garbage loosely in your cart. Carts that are overstuffed or have material jammed into them may not empty completely.
- Please remove your containers from the road edge as soon as possible after they have been serviced as is practical.
- Be sure all items are contained inside your carts. Carts that have items sticking out of them or have material piled on top may not be emptied or may receive additional charges.
- You may opt to set out recycle and yard waste carts only when full if you choose.

For everyone’s safety and convenience, we request that you pay special attention to the following:

- Do not place carts within three feet of vehicles, mailboxes, fire hydrants, other obstacles or personal property.
- Collection vehicles need 14' overhead clearance. Carts should not be placed in an area with overhangs, trees or other obstacles.
- Please park your car in your driveway the night before your collection day whenever possible. There may be a delay in collection of blocked carts.
- If you have any questions, please call or check out our new on-line chat option at *unicycler.com*.

Extra Trash

- If you have an overloaded garbage cart or extra bags of garbage piled on top of, or alongside your cart, you may receive an automatic charge for each extra bag or can of garbage. Carts are considered overloaded if the lid will not close.
- If you have extra garbage, call our office at 800-243-0291 by 2:30 pm the day before your regular collection day to order extra service and avoid confusion when you receive your bill. Do not overstuff your carts as they may not empty completely.

Bulky Item Pickups

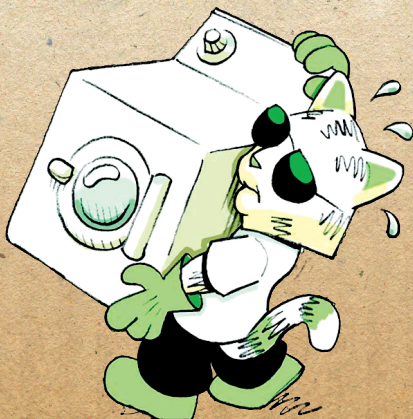
The Ratto Group - *A family of companies* local hauler (Redwood Empire Disposal) offers Bulky Item Pick up for items that are too large for your cart.

Items such as mattresses, couches, and household appliances with freon can be picked up **for a fee** for single-family residential customers. Call Redwood Empire Disposal at 800-243-0291 to schedule a pick up.

We make any attempt to reduce, reuse and recycle your bulky items and keep them out of the landfill. Help us out by trying to donate your item before disposing of it.

Please Remember:

- We are unable to pick up hazardous waste. Visit www.unicycler.com or www.marinrecycles.org for more information.
- Please direct reusable items to thrift or second hand stores.



Ask the Unicycler

Dear Unicycler,

What is the easiest and most efficient way to pay my bill?

Signed,

Mr. Green

Dear Mr. Green:

Our online bill pay is the easiest and most efficient way to pay your garbage bill. With our online service you no longer receive paper bills, eliminate the use of stamps and handwritten checks which reduces the use of paper.

To get started, follow these 4 simple steps:

- Go to unicycler.com and click on pay bill in the right hand corner
- Have your bill with your unique ID available
- Click on the register button
- Enter in your information

Once you have created your account you will be able to: Pay your bill with credit, debit or bank withdrawal (residential billing is done quarterly and commercial billing is done monthly). Set up automatic "no-hassle" future payments. View your bills and billing history. Go Green - Enroll in paperless billing. Save trees, time and hassle.



PARTICIPATING RETAILERS:

Bolinas Bay Lumber & Landscape 1 Olema-Bolinas Rd, Bolinas	(415) 868-2900
Building Supply Center 11280 State Route 1, Pt. Reyes	(415) 663-1737
Marin Ace 180 Merrydale Rd, San Rafael	(415) 479-9393
Goodman Building Supply 775 Redwood Hwy, Mill Valley	(415) 388-6233
Jackson’s Hardware 435 Du Bois St, San Rafael	(415) 454-3740
Jim Corbet’s Ace Hardware 800 Magnolia Ave, Larkspur	(415) 924-7013
Knight’s Hardware 1650 Tiburon Blvd, Tiburon	(415) 435-4603
Good Earth Natural Foods 720 Center Blvd, Fairfax	(415) 454-0123
Waterstreet Hardware 318 Caledonia St, Sausalito	(415) 332-4318
Novato Builders Supply 800 Sweetser Ave, Novato	(415) 892-1651



Marin County
Hazardous and Solid Waste Management
Joint Powers Authority (JPA)

BATTERIES (of 4 lbs or less)

Any common everyday battery used in the home such as cell phone, cordless electric devices, laptop computers, power tools, rechargeable batteries including standard size AAA through D and those found in watches and hearing aids.



Mercury & Carbon Zinc



Rechargeable Nickel Cadmium (NiCad) & Lithium Ion (L-Ion)



Alkaline



Small Sealed Lead Acid

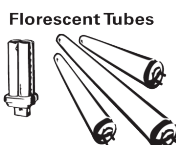


Silver Button




NOT ACCEPTING large lead acid Automotive batteries found in cars, trucks, boats or motorcycles


BULBS



Fluorescent Tubes



Compact Florescent Bulbs



NOT ACCEPTING non-Fluorescent Bulbs such as halogen or incandescents

MarinRecycles.org
ZeroWasteMarin.org

YardWaste Guidelines

- Place all grass cuttings, leaves & weeds, tree & shrubbery trimmings, berry bushes and other yard & garden waste inside your green rolling cart, also referred to as your yard waste cart. Branches under 4 inches in diameter and less than 2 feet long are accepted.
- Also accepted in the yard waste carts are food scraps such as fruits and vegetables (including pits and nuts), coffee grounds with filters, tea bags, plate scrapings and kitchen prep scraps, bread, grains, pasta, baked goods, eggs, eggshells and non-coated paper products such as paper plates and napkins.
- Place your yard waste cart at the curb allowing at least three feet of space between containers.
- All green waste must be in the container. Loose material will not be collected.
- Do not put yard waste in plastic bags.
- Acceptable (except in Bolinas & Stinson Beach) - Meat, bones, dairy & seafood including shells.

Keep Your Green Clean!

Keep your cart clean by wrapping your food scraps in a brown paper bag or newspaper. The following materials are banned from your yard waste cart.

- garbage • sod or dirt • rock • gravel or concrete • lumber •playground bark • plastic bags
- nursery pots or plastic • pet waste • palm fronds • processed or treated wood products
- bamboo • cups, packaging & straws • liquid waste & ice • plastics • cardboard
- take-out containers • compostable plastics (even bio-bags) • corks • nursery pots or plastic
- pet waste



ACCEPTED FOR RECYCLING ONLY

ACEPTADO PARA RECICLAR SOLAMENTE



Metal & Aluminum Cans
Latas de Metal y Aluminio



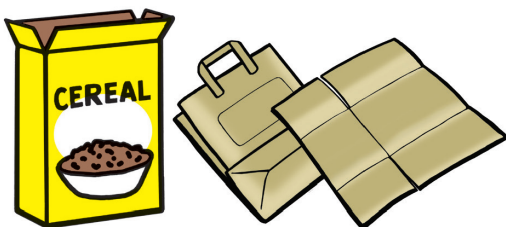
Glass Bottles & Jars
Jarras y Botellas de Vidrio



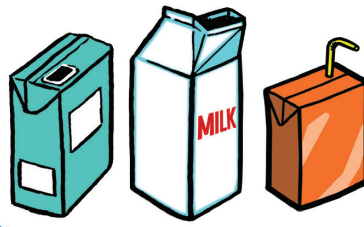
Plastic Bottles (with lid)
Botellas de Plástico (con Tapa)



Empty Household Plastic Containers & Rigid Plastic Items
Recipientes Para el Hogar de Plástico Vacíos Así Como los Artículos de Plástico Rígido (No Envases Para Empaque de Poliester Tipo Almeja)



Paper (No Shredded Paper), Paper Bags, Cereal Boxes, Cardboard (Flattened)
Papel (No Papel Picado), Bolsas del Papel, Cajas de Cereales, Carton (Aplaste Todas las Cajas),



Milk Cartons, Soy/Rice Milk & Juice Boxes
Cartones de Leche, de Soya/Arroz y Cajas de Jugo



Newspaper, Magazines, Office Paper, Catalogs & Telephone Books
Periódicos, Revistas, Papel de Oficina, Catálogos y Guías Telefónicas

Questions? Not sure which bin?

¿Preguntas? ¿No estoy seguro que contenedor?

unicycler.com

**No Trash
No Basura**

TRGHH12X91015

Unicycler Offers Full Construction Services!

The Unicycler has been busy as of late. We are proud to announce that the Ratto Group is now offering full construction services for all of your disposal needs. By "Construction Services" we mean just about everything a general contractor would need to get a building project going. This also includes disposal of the construction and demolition materials. The majority of this is diverted from the landfill. Exchanges of debris boxes can even be done same day. We now offer a full array of the following:

Home & Business Cleanouts

Temporary Fencing

Recycling & Debris Boxes

Private Street Sweeping

Why is it Important to Recycle Used Motor Oil and Oil Filters?

- Used oil can contain contaminants such as lead, magnesium, copper, zinc, chromium, arsenic, cadmium and chlorinated compounds.
- Don't pour used motor oil down the drain or on the ground. One gallon of used motor oil can pollute one million gallons of drinking water.
- Used motor oil represents more than 40 percent of the oil pollution in our country's waterways.
- Used oil is easy to recycle. It can be re-refined into usable motor oil.
- Recycle your used oil filter. Even after draining, used oil filters contain about 10 ounces of used oil, as well as one pound of reusable steel.
- All the used oil filters sold annually in California could be recycled into 67 million pounds of steel, enough to build three large football stadiums!

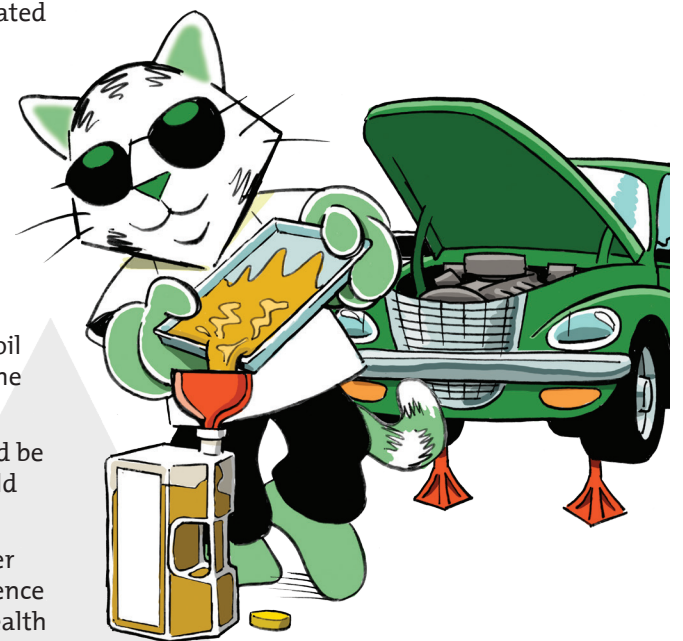
Here in Marin County we recycle 3,800 gallons of oil per year. Recycling used oil and filters reduces our dependence on foreign oil, saves valuable resources, protects the health of our families, and is the only legal way to dispose of them! You haven't finished changing your oil until you've taken this last important step. There are convenient options for recycling used oil and filters in West Marin:

Curbside recycling service for used motor oil and filters!

Call Customer Service at 800-243-0291 or go to unicycler.com and chat live to request a free oil recycling kit. Transfer the used oil into the provided oil recycling container. Place the filter in the provided bag. Then call our office to request a pickup. Place oil and filter at the curb next to (not in) your recycling cart for pickup on your regular collection day. The driver will leave a replacement container when your full one is collected.

Drop-off Recycling Locations!

There are many locations in Marin County that accept motor oil for recycling. Most also take filters. To find a list of locations nearest you, visit www.marinrecycles.org. Or check your Sonoma County Recycling Guide in the AT&T Phone Book. Find it behind the tab under Recycling in the AT&T Yellow Pages.



**Chat Live
Now!**

No need to spend your time on the phone. Simply go to unicycler.com during business hours and click on the "Chat Now" option on the right side. A Customer Service Agent will be able to handle whatever situation you may have. Or, if it's past business hours, click on "Leave a message" and we'll get back to you within 24 hours.

Give us a call at 707-585-5222 or visit us at www.unicycler.com for more information on what we can do to help out your jobsite.



Redwood Empire Disposal

PO Box 14609
Santa Rosa, CA 95402

Tel (800) 243-0291
Fax (707) 586-5543

Keep Your Eye Out For Split Bodied Trucks!

Have you seen the garbage truck stop to collect the garbage cart and then pull forward and collect the blue recycling cart? These items are not being mixed, but are being placed in separate compartments of Redwood Empire Disposal's split body trucks. You may see these trucks, with a split compartment body, which keeps garbage and recycling separate within the truck.

Used in some areas of Sonoma and Marin County, these eco-friendly vehicles decrease the number of trips through neighborhoods by one-third, while the split compartment trucks keep trash and recycling separate. Collecting two materials in one truck decreases the amount of fuel and energy used, not to mention reduced traffic on roadways and in neighborhoods.

California has California Air Resource Board rules that went into effect in 2010; these new trucks meet and exceed all of the California air quality standards. Our entire fleet of collection vehicles run on Ultra-Low Sulfur Diesel Fuel, specifically refined diesel fuel that has dramatically reduced sulfur content from the previous standard in highway diesel. Keep your eye out for these split bodied trucks in your neighborhood!

Truck Benefits:

- Collection of Two Materials in One Truck
- Reduced Truck Trips in Your Neighborhood
- Reduces Wear and Tear on Your Streets
- Reduced Emissions Exceeds State Standards



Recycling Leftover Paint is the Only Way to Go!

PaintCare Inc. is a non-profit organization established by the American Coatings Association to implement California's Paint Stewardship Law and is establishing hundreds of drop-off sites for postconsumer (leftover) paint at retailers and other sites throughout California. On October 19, 2012, the first day of the California PaintCare Program, 340 new sites started accepting paint from the public. PaintCare will continue to set up additional sites throughout California.

Due to the overwhelming response to the program at the beginning, please call the site prior to bringing them your leftovers to make sure they are able to accept your paint and to check on the quantity of paint they will accept.

The drop off sites near you are listed below:

Kelly Moore- 881 Olive Ave, Novato, CA 94945 - (415) 897-5151

Dunn-Edwards- 717 Francisco Blvd E, San Rafael, CA 94901 (415) 259-0302

Kelly Moore- 601 E Francisco Blvd, San Rafael, CA 94901 (415) 258-0627

Sherwin-Williams- 444 Du Bois St, San Rafael, CA 94901 (415) 485-6739



Household Hazardous Waste (HHW) Options

Marin HHW Facility: 565 Jacoby Street, San Rafael

Operating Hours:

Business: By appointment only, (415) 458-5549

Residential: Tuesday-Saturday, 8:00 am - 3:30 pm, (415) 485-6806

Types of HHW accepted:

- oil based paints, stains & thinners • household & car batteries
- fluorescent bulbs & tubes • pesticides, insecticides • propane tanks
- computer monitors & TVs + other electronic waste • motor oil & filters
- engine cleaners/brake fluid • poisons, bait & sprays • pool chemicals
- mercury thermometers & switches • approved sharps containers • latex paint
- household cleaners • asbestos with special handling. Call for instructions

Toxic Away Days

One day drop off events are scheduled periodically in West Marin. Sponsored by the Marin JPA, Marin & San Rafael Fire Departments and Phillips Services. For more information, call the San Rafael Fire Department at (415) 485-3309.

