

# 2018 Pacifica Service Brochure

## New Recycling Service Beginning January 2018

Recology of the Coast began weekly pickup in January 2018. This service has increased our diversion percentage through September 2018 by 8.5%. Customers have remarked on social media that they still are putting their bins out weekly after six months of the start of the new program. It is important that during the beginning of the Christmas purchasing/rainy season that all your cardboard boxes are put into the recycling cart to keep the material as dry as possible. Christmas trees are free of charge from December 26th through January 31st. Flocked trees are acceptable. The tree must be cut in half if the tree is over six feet tall. All lights and ornamentation must be removed from the tree. Christmas wrappings can be included in the recycling cart but no Styrofoam or plastic wrap please.

- **HOLIDAY PICKUP FOR 2018**
- **Thanksgiving Day**
- Regular pickup - have carts out by 5am
- **Christmas Day, Tuesday, 12/25/18**
- Service changed to **SATURDAY, DECEMBER 22nd**. Have all scheduled carts out by 5am
- **New Year's Day, Tuesday, 1/1/19**
- Service changed to **SATURDAY, DECEMBER 29th**. Have all scheduled carts out by 5am
- **Recycling Yard closed Saturday before Christmas and Saturday before New Years.**

## Service Reminders.....

**COLLECTION TIMES:** All carts must be placed curbside by 6am on your service day. Per City of Pacifica Ordinance #6-5.106, your carts should not be set out more than 12 hours in advance of pick-up nor left curbside for more than 12 hours after pick-up. Please be sure to pull your carts back from the curb once they are serviced.

We are not responsible for any articles left on or near collection containers.

**CONTAINERS:** We will not service **ANY** carts where the lids do not close completely. Please contact our office for more information at **650-355-9000**.

**EXTRA GARBAGE:** Extra garbage must be bagged and arrangements made with our office in advance for pickup. **Extra Bag Tags** are available for a fee by calling **Recology of the Coast at 650-355-9000**. You may also schedule one of your bulky item collections. See page 4 for more information.

**MISSED COLLECTIONS:** Please report any missed collections to our office by the following business day. We have a 24 hour messaging service so if you call after hours, please leave a detailed message and a Customer Service Representative will address your missed collection the following day, Monday – Friday.

## Upcoming Events at the Recycling Yard – 1046 Palmetto Avenue, Pacifica

*Must show proof of residency in the Recology of the Coast service area.*

### FREE SHREDDING EVENTS

**June 9, 2018 & December 8, 2018**

8:00am – 12 noon  
(or until the truck is full)

Each residence is allowed up to six (6) banker boxes of paper for free confidential shredding per event.

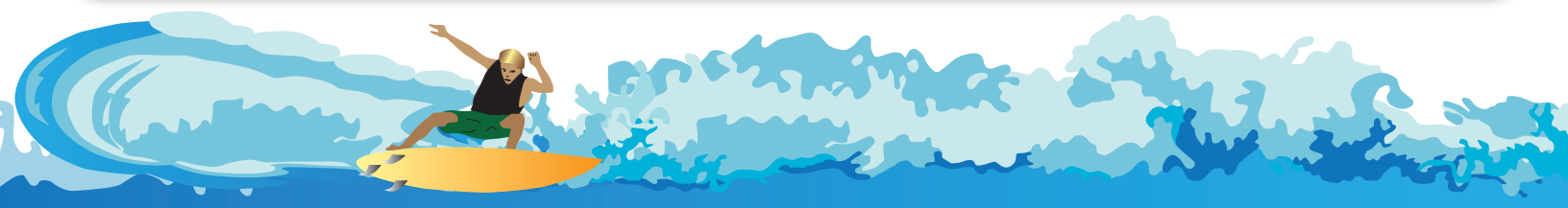


### COMPOST GIVEAWAYS

**March 10, 2018 & September 8, 2018**

8:00am – 12 noon  
(or until supply is gone)

Each residence may bring 2 – 30 gallon cans to collect compost. *Please note:* Only cans will be filled, no boxes or bags.



# Organics

The Organics Program allows you to mix green waste, food scraps and soiled paper products in the same **GREEN** cart.

Your organics cart is emptied every week on your regular service day.



We are bag-free carts! No biodegradable, compostable or plastic bags, please.

## ACCEPTABLE ITEMS:

### Food Waste

(i.e. bones, coffee grounds, fruit, meat, vegetables)

**Greenwaste** (i.e. branches – cut to less than 3 feet in length and less than 3 inches in diameter, leaves, yard trimmings)

**Soiled Paper Waste** (i.e. coffee filters, paper milk cartons, paper plates & napkins, pizza boxes, tea bags)

## UNACCEPTABLE ITEMS:

Animal waste	brick, gravel
Diapers	Furniture
Ashes	Garbage
Cat litter	Garden hose
Clothing	Non-recyclable items
Compostable or biodegradable bags	Photographs/negatives
Construction & Demolition (C & D) Debris (i.e. Sheetrock)	Plastic bags
	Recyclable items
	Sawdust
	Treated & painted wood
	Tree stumps

Dirt, rock, concrete,

Your monthly service includes one (1) GREEN and (1) BLUE cart per pickup. If you need more service on a regular basis, you may rent an additional cart for a low monthly fee.

# Single Stream Recycling

The Single-Stream Recycling Program allows you to put all your recyclables into the same **BLUE** cart!



## ACCEPTABLE ITEMS:

**Aluminum** (i.e. soda cans, CLEAN aluminum foil)

**Aseptic Containers** (juice and soup boxes)

**Cardboard**

**Glass Bottles & Jars**

**Mixed Paper** (colored, computer, magazines)

**Plastics** (bottles, containers #1-7, party cups, plastic cutlery, straws)

## UNACCEPTABLE ITEMS:

Bubble wrap	Photographs/negatives
Clothing	Plastic bags
Food contaminated packaging	Plate glass
Furniture	PVC pipes
Garden hoses	Styrofoam
Packing peanuts	Unmarked plastics (plastics without the #1-#7 recycling symbol)
Paper towels, napkins, facial tissue	

For recycling and reuse options of the materials listed above, please visit San Mateo County RecycleWorks at [www.RecycleWorks.org](http://www.RecycleWorks.org).

**REMINDER:** Please place your carts curbside by 6 a.m. on your regular service day for collection. In order for your carts to be emptied, make sure the lids are closed completely; debris may not be sticking out of the cart. If you have questions about the programs above or to inquire about renting additional carts, please call Recology of the Coast at 650-355-9000 or visit our website at [www.recology.com](http://www.recology.com).



# Recyclopedia

The following is an alphabetical listing of items that can be disposed or recycled in or around the City of Pacifica. Items shown in **BOLD** are picked up curbside. If you have any questions, please call **Recology of the Coast** at **650-355-9000** or visit **www.recology.com**.

- ALUMINUM FOIL** - Recycle cart (completely clean)
- ANTIFREEZE<sup>1</sup> - Recycling Yard
- APPLIANCES<sup>2</sup> - Recycling Yard
- BATTERIES; auto, cell phone – Recycling Yard
- BATTERIES**; household – in sealed clear plastic bag on top of recycling cart
- BICYCLES - Recycling Yard
- BRANCHES** - Organics cart (cut to less than 3 feet in length and less than 3 inches in diameter)
- BRASS - Recycling Yard
- BUILDING MATERIALS - See Debris Box Information on page 4
- CANS** - Recycle cart (aluminum, bimetal, tin)
- CARDBOARD** - Extra cardboard - Recycling Yard
- CHRISTMAS TREES** - picked up curbside through January 31st, cut to 4ft in length or less.
- COFFEE PODS - Office at 2305 Palmetto Ave
- COMPUTER PAPER** - Recycle cart
- CONCRETE - See Debris Box
- InformationCOPPER PIPE AND WIRE - Recycling Yard
- DIRT – Call the office for disposal options, 650-355-9000
- ELECTRONIC WASTE<sup>2</sup> - Recycling Yard  
(Zip Drives, Speakers, Monitors, Keyboards, Printers, Fax Machines, Copy Machines, Power Cables, TVs, Typewriters, VCRs, Stereo Equipment, Cell Phones, Pagers)
- FLOWER POTS** - Recycle cart - plastic only
- FLUORESCENT/CFL BULBS - Recycling Yard
- FOOD SCRAPS** – Organics cart.
- FURNITURE - Recycling Yard, On-Call Collection, Donate
- GARDEN HOSE – Garbage cart
- GLASS CONTAINERS** - Recycle cart
- GREENWASTE** - Organics cart.
- HOUSEHOLD HAZARDOUS WASTE (HHW) – call The County of San Mateo at 650-363-4718 to schedule an appointment
- JUNK MAIL** - Recycle cart
- LUMBER - see Wood
- **MAGAZINES** - Recycle cart
- MATTRESSES – Standard mattress/box spring only at the Recycling Yard. Futons, posturepedic, memory foam, etc are NOT accepted.
- MOTOR OIL<sup>1</sup> - Recycling Yard
- **NEWSPAPER** - Recycle cart
- PAINT; latex and oil base<sup>1</sup> – See Household Hazardous Waste
- **PAPER** - Recycle cart (colored, computer, mixed)
- **PAPER BAGS** - Recycle or Organics cart
- **PHONE BOOKS** - Recycle cart
- PLASTIC BASKETS - Recycle cart
- **PLASTIC CONTAINERS** - (#1 - #7) Recycle cart or the Recycling Yard
- PLASTIC BAGS – Garbage cart only
- PROPANE TANKS – Recycle Yard (empty tank with safety valve) or call The County of San Mateo at 650-363-4718 to schedule an appointment
- SATELLITE DISHES - Recycling Yard or TV service provider
- SHARPS - Recycling Yard.
- SHEETROCK/DRYWALL - See Debris Box information on page 4
- **SOILED PAPER PRODUCTS** - Organics cart
- STYROFOAM PEANUTS – Garbage cart (bagged).
- TIRES<sup>2</sup> - Recycling Yard
- **TREE LIMBS, CUTTINGS** - Organics cart (cut to less than 3 feet in length and less than 3 inches in diameter)
- VITAMINS/MEDICATIONS – Pacifica Police Department: 2075 Coast Highway confidential drop-off container
- WOOD – Recycling Yard - Untreated, unpainted, unstained, lumber ONLY - NO pressed board, pressure treated or plywood accepted. NO tree branches, stumps, etc.
- **YARD WASTE** - Organics Cart.

<sup>1</sup> A five-gallon limit per household, per month may apply.

<sup>2</sup> A fee may be charged for items such as: Refrigerators, tires, etc.

## Recycle Yard

The **Recology of the Coast Recycle Yard** is located at 1046 Palmetto Ave, in Pacifica and is open Tuesday and Thursday 8 - 4 pm and Saturday 8-1 pm. Hours of Operation are seasonal.

For the current hours please visit our website at **recology.com**

### The Recycle Yard is closed on the following holidays:

- New Year's Day
- Martin Luther King Day
- President's Day
- Memorial Day
- 4th of July
- Labor Day
- Weekend of the Fog Festival
- Thanksgiving Day
- Christmas Day
- Saturday before Christmas and New Year's Day



### Items accepted at the Recycling Yard are:

- Antifreeze<sup>1</sup>
- Appliances<sup>2</sup>
- Car and Household Batteries
- Cellular Phones
- Computers<sup>2</sup>
- Televisions<sup>2</sup>
- Cooking Oil, used
- Fluorescent tubes and bulbs
- Furniture
- Latex & Oil based paint<sup>1</sup> - 5 gallons
- Motor Oil and Filters<sup>1</sup>
- Scrap Metal
- Sharps (must be inside a biohazard container)
- Small Household Appliances (like microwaves, radios, space heaters)
- Styrofoam, packing blocks only
- Tires (auto and pick-up truck only)<sup>2</sup>
- Wood, unpainted & untreated lumber

<sup>1</sup> A five-gallon limit per household, per month may apply.

<sup>2</sup> A fee may be charged for items such as: Refrigerators, tires, etc.

For more information, please call our Customer Service Department at **650-355-9000** or visit us online at **www.recology.com**.

Items accepted at the discretion of the lot attendant.







2305 Palmetto Ave  
Pacifica, CA 94044



PRST STD  
U.S. Postage  
**PAID**  
Permit No. 63  
Pacifica, CA 94044

## Bulky Goods Pick-Up Program - Three (3) per Calendar Year

Residents in single-family, duplexes and triplexes are entitled to 3 free curbside collections per calendar year.

Each residence is allowed up to either 5-32 gallon bags OR 1 large item no longer than 6 feet and no heavier than 100 pounds. If you wish to use all your collections at one time, you may request it when you place your order.

This service is offered by appointment only and is subject to availability. Pick-ups are non-transferable and cannot be carried over from year to year. **To avoid a return trip fee**, item(s) must be curbside/at the street by 6am for pick-up. Driver will NOT

remove item(s) from inside your home.

**Seniors:** If you need help, please call our office the day before your collection and we will send someone to help bring your garage located items to the curb. We will not be able to enter other areas of your home.

For more information or to schedule a collection, please call **650-355-9000**.

**Unacceptable items** include green waste, tree trunks, dirt, rock, concrete, hazardous waste and Construction and Demolition (C & D) debris.

**NOTE: Please DO NOT use your carts in lieu of bags or boxes for disposal.** Weight limits may apply and acceptability of items are up to the discretion of the driver.

**ALL 2018 BULKY ITEM PICK UPS MUST BE SCHEDULED NO LATER THAN DECEMBER 14TH.**

## DEBRIS BOX SERVICE

Recology of the Coast is the exclusive debris box hauler for the City of Pacifica. Call before 12pm Mon – Fri for same day service. Payment due at time of order. Construction and Demolition (C & D) Recycling Ordinance documentation is available upon request – please request at time of order. Recology of the Coast is not liable for damage done to your driveway/property from use of debris box. Owner/Renter/Occupant accepts responsibility should damage occur.

Debris boxes cannot contain hazardous waste, e-waste, universal waste, toxic materials, explosives, fuel, oil, paints, solvents, chemicals, asbestos, tires, refrigerators, air conditioners, computer monitors or televisions.

Due to new disposal site regulations, the following items cannot be placed in the debris box: sofas, loveseats, mattresses, box springs and overstuffed chairs. **Extra charges will be applied if these items are included in a debris box rental.**

## Life Line/Low Income Customers

If you are on the PG&E Care program, please contact Customer Service at 650-355-9000 to sign up for low income rate. Rate applies to 20 gallon cart only.

## Recology of the Coast PAYMENT OPTIONS

On-line at Recology.com

Self service by phone: 650-451-0185

In person or by mail:

2305 Palmetto Avenue  
Pacifica, CA 94044

Phone assisted: 650-355-9000