

2020 Montara/Moss Beach

Residential Greenwaste Calendar & Service Brochure



SERVICE REMINDERS

COLLECTION TIMES:

All collection containers must be placed **at the street by 6 a.m.** on your service day. We recommend placing containers out the night before as pick-up times may vary. After service, please bring your containers back from the street as they should not sit out longer than 12 hours.

We will not service **ANY** container where the lids do not close completely. We are not responsible for any articles left on or near collection containers.

EXTRA GARBAGE:

Extra garbage must be bagged and arrangements made with our office in advance for pickup. **Extra Bag Tags** are available for a fee by calling **Recology of the Coast** at **650-355-9000**. You may also schedule one of your free collections. See page 8 for more information.

MISSED COLLECTIONS:

Please report any missed collections to our office by the following business day. We have a 24 hour messaging service so if you call after hours, please leave a detailed message and a Customer Service Representative will address your missed collection the following day, Monday – Friday.

CHRISTMAS TREE RECYCLING:

Christmas Trees will be collected at the curb/street on your regular greenwaste collection day through **January 31** and should be cut to 4 feet or less in length. Those trees not picked up during the month above should be cut up and put into your green waste container(s). **Please remove all ornaments, tinsel, lights and stands. Flocked trees are ok.**

HOLIDAY PICKUP FOR 2020



Thanksgiving Day

Regular pickup - have carts out by 5am

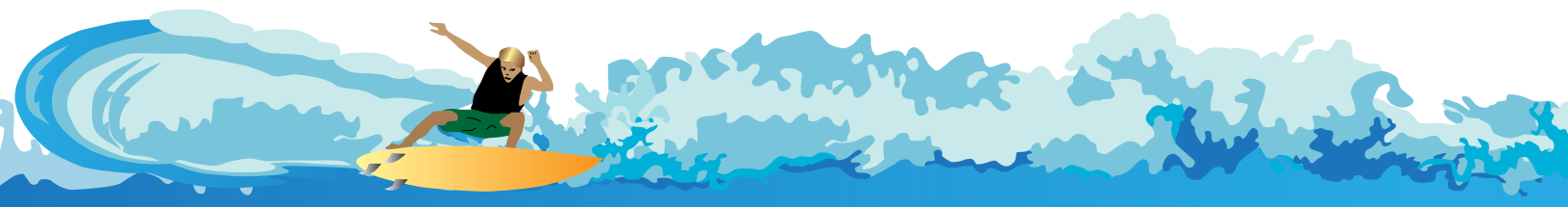
Christmas Day, Friday, 12/25/20

Service changed to Saturday, December 26th. Have all scheduled carts out by 5am

New Year's Day, Friday, 1/1/21

Service changed to Saturday, January 2nd. Have all scheduled carts out by 5am

Please note: 1 extra bag at no charge on each of these Saturday dates



Quarterly Recycle Days

Montara, Moss Beach

Farallone View School, 1100 LeConte & Kanoff in Montara

Time: 8:00am - 12:00pm

DATES:

February 8, 2020

May 9, 2020

August 8, 2020

November 7, 2020

For more information call:

650-355-9000 or 650-728-3545

ITEMS NOT ACCEPTED

Antifreeze & Motor Oil
Concrete
Hazardous Waste
Packing Peanuts
Paint, Aerosol Cans
Painted & Pressure Treated Wood
Pesticides
Sheetrock
Tires (large truck or tractors)



ITEMS ACCEPTED

Appliances (1 per household, refrigerators/freezers no charge)
Batteries (auto & household)
Carpet & Carpet padding (1 room only no larger than 12x12)
Cell Phones, pagers
Computers, Monitors, Keyboards
Fluorescent bulbs
Furniture
Green Waste/Yard waste (limit of 4 - 30 gallon cans)
Mattress/Box Spring (1 set only)
Printers, Cartridges, Cables
Scrap Metal & Metal Car Parts
Small Fax & Copy Machines
Stereos, TVs, VCRs
Styrofoam (large blocks only)
Tires (auto, motorcycle, pick-up) - limit of 4
Untreated wood



Single Stream Recycling

The Single-Stream Recycling Program allows you to put all your recyclables into the same rolling cart and will be serviced **every week!** Please place your cart curbside/at the street by **6 a.m.** on your regular service day for collection.



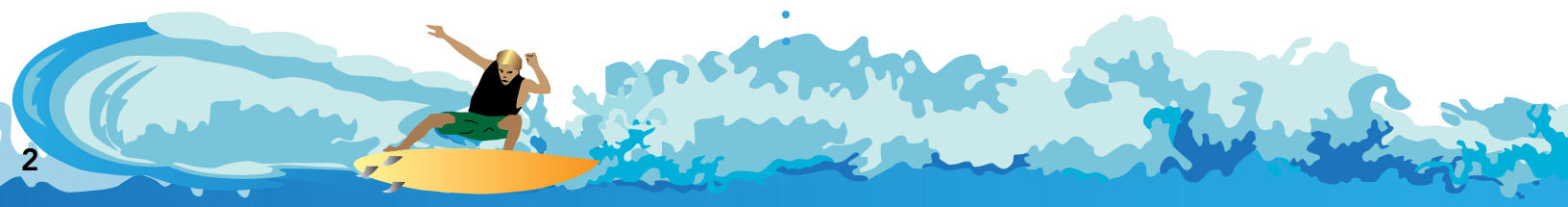
UNACCEPTABLE ITEMS:

Animal Waste
Bubble wrap
Ceramics
Clothing
Compostable bags
Diapers
Food contaminated packaging
Furniture
Garden hoses
Packing peanuts
Paper towels, napkins, facial tissue
Photographs/Negatives
Plastic Bags
PVC pipes
Styrofoam
Unmarked plastics (plastics without the #1-#7 recycling symbol)

ACCEPTABLE ITEMS:

Aluminum
(i.e. soda cans, **CLEAN** aluminum foil)
Aseptic Containers
(juice and soup boxes)
Cardboard
(extra cut down to 3ft x 3ft)
Glass Bottles & Jars
Mixed Paper (colored, computer, magazines)
Plastics
(containers #1-7)

For recycling and reuse options of the materials listed above, please visit San Mateo County RecycleWorks at www.RecycleWorks.org.



Recyclopedia

The following is an alphabetical listing of items that can be disposed or recycled in or around your area. Items shown in **BOLD** are picked up curbside. If you have any questions, please call **Recology of the Coast** at **650-355-9000** or visit **www.recologyofthecoast.com**.

ALUMINUM FOIL - Recycle cart (completely clean)

ANTIFREEZE¹ - Recycling Yard

APPLIANCES² - Recycling Yard

BATTERIES; auto, cell phone – Recycling Yard

BATTERIES; household – in sealed clear plastic bag on top of recycling cart

BICYCLES - Recycling Yard

BOOKS - hardbound and softbound books Discovery Book kiosk outside recycling yard

BRANCHES - Organics cart (cut to less than 3 feet in length and less than 3 inches in diameter)

BRASS - Recycling Yard

BUILDING MATERIALS - See Debris Box Information on page 4

CANS - Recycle cart (aluminum, bimetal, tin)

CARDBOARD - Extra cardboard - Recycling Yard

CHRISTMAS TREES - picked up curbside through January 31st, cut to 4ft in length or less.

COMPOSTABLE BAGS - green cart only

COMPUTER PAPER - Recycle cart

CONCRETE - See Debris Box

COPPER PIPE AND WIRE - Recycling Yard

DIRT – Call the office for disposal options, 650-355-9000

ELECTRONIC WASTE - Recycling Yard (Zip Drives, Speakers, Monitors, Keyboards, Printers, Fax Machines, Copy Machines, Power Cables, TVs, Typewriters, VCRs, Stereo Equipment, Cell Phones, Pagers)

FLOWER POTS - Recycle cart - plastic only

FLUORESCENT/CFL BULBS - Recycling Yard

FOOD SCRAPS – Garbage cart.

FURNITURE - Recycling Yard, On-Call Collection, Donate

GARDEN HOSE – Garbage cart

GLASS CONTAINERS - Recycle cart

GREENWASTE - Organics cart.

HOUSEHOLD HAZARDOUS WASTE (HHW) – call The County of San Mateo at 650-363-4718 to schedule an appointment

JUNK MAIL - Recycle cart

LUMBER - see Wood

MAGAZINES - Recycle cart

MATTRESSES – Standard mattress/box spring only at the Recycling Yard. Futons, posturepedic, memory foam, etc are NOT accepted.

MOTOR OIL¹ - Recycling Yard

NEWSPAPER - Recycle cart

PAINT; latex and oil base¹ – See Household Hazardous Waste

PAPER - Recycle cart (colored, computer, mixed)

PAPER BAGS - Recycle or Organics cart

PHONE BOOKS - Recycle cart

PLASTIC BASKETS - Recycle cart

PLASTIC CONTAINERS - (#1 - #7) Recycle cart or the Recycling Yard

PLASTIC BAGS – Garbage cart only

PROPANE TANKS – call The County of San Mateo at 650-363-4718 to schedule an appointment

SATELLITE DISHES - Recycling Yard or TV service provider

SHARPS - Recycling Yard.

SHEETROCK/DRYWALL - See Debris Box information on page 4

SOILED PAPER PRODUCTS - Organics cart

STYROFOAM PEANUTS – Garbage cart (bagged).

STYROFOAM BLOCKS – Recycling Yard

TIRES² - Recycling Yard

TREE LIMBS, CUTTINGS - Organics cart (cut to less than 3 feet in length and less than 3 inches in diameter)

VITAMINS/MEDICATIONS – Pacifica Police Department: 2075 Coast Highway confidential drop-off container

WOOD – Recycling Yard - Untreated, unpainted, unstained, lumber ONLY - NO pressed board, pressure treated or plywood accepted. NO tree branches, stumps, etc.

YARD WASTE - Organics Cart.

¹ A five-gallon limit per household, per month may apply.

² A fee may be charged for items such as: Refrigerators, tires, etc.

RECYCLE YARD

The **Recology of the Coast Recycle Yard** is located at 1046 Palmetto Ave, in Pacifica. Hours of operation Tuesday, Thursday 8 – 4 and Saturday 8 – 1. Hours of Operation are seasonal. Closed Monday, Wednesday, Friday, Sunday and Holidays. Visit our website for days of service: www.recology.com.

Items accepted at the Recycling Yard are:

- Antifreeze¹
- Appliances²
- Car and Household Batteries
- Cellular Phones
- Computers²
- Televisions²
- Cooking Oil, used
- Fluorescent tubes and bulbs
- Furniture
- Latex (water-based) paint¹
- Motor Oil and Filters¹
- Scrap Metal



- Sharps (must be inside a biohazard container)
- Small Household Appliances (like microwaves, radios, space heaters)
- Styrofoam, packing blocks only
- Tires (auto and pick-up truck only)²
- Wood, unpainted & untreated

¹ A five-gallon limit per household, per month may apply.

² A fee may be charged for items such as: Refrigerators, computers, tires, etc.

For more information, please call our Customer Service Department at **650-355-9000** or visit us online at www.recology.com. Items accepted at discretion of Recycling lot attendant.

The Recycle Yard is closed on the following holidays:

- New Year's Day
- Martin Luther King Day
- President's Day
- Saturday after Christmas Day and New Year's Day
- Memorial Day
- 4th of July
- Labor Day
- Weekend of the Fog Festival
- Thanksgiving Day
- Christmas Day

Household Hazardous Waste (HHW) Information

The County of San Mateo offers free disposal of certain HHWs:

- Art and hobby supplies
- Furniture and metal polishes
- Household cleaners
- Oil and latex based paint
- Paint thinner
- Pesticides
- Pool chemicals
- Photographic chemicals



To schedule an appointment call the automated appointment line at **650-363-4718** or visit their website <http://smchealth.org/hhw/>

RECYCLING THEFT:

It is illegal to remove recycling materials once they have been placed inside of a recycling cart. If you are a witness to this crime, please report it by calling the North Coast County Substation Business Line at: **650-573-2801**.



Pharmaceutical & Sharps Disposal

Vitamins & Medications or Sharps (medical devices for self-injection or blood tests):

North Coast Sub-Station: 500 California Ave, Moss Beach or Half Moon Bay Police Station: 537 Kelly St.

For more information about Sharps and Pharmaceutical disposal visit <http://smchealth.org/hhw>



GARBAGE PICKUP SERVICE REMINDERS:

Please place garbage containers curbside by 6 a.m. on your pickup day for service.

UNACCEPTABLE ITEMS:

Ashes
Dirt/Rocks/Bricks/Concrete
Pesticides

Construction Debris
E-Waste
Paint

Hazardous Waste
Motor oil

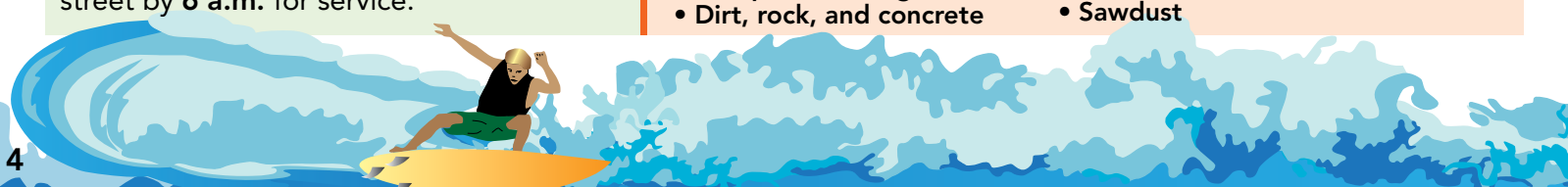
Green Waste Service Reminders:

Please place grass clippings, leaves and small branches (cut to less than 3ft in length and less than 3in. in diameter) in your green waste container(s) and place curbside/at the street by **6 a.m.** for service.

UNACCEPTABLE ITEMS

- Animal waste
- Ashes and sod
- Bamboo and palm fronds
- Building materials
- Cat litter
- Compostable bags
- Dirt, rock, and concrete

- Food Waste
- Garbage
- Plastic/biodegradable bags
- Poison oak
- Pumpkins and gourds
- Tree stumps and painted wood
- Sawdust



Green Waste Collection Schedule

Your green waste container(s) are collected every other week on your regular garbage day. To determine if you are on the **YELLOW** or **BLUE** schedule, match the color listed next to your address on page 6 to the Collection Calendar below.

JANUARY 2020

Sun	Mon	Tue	Wed	Thu	Fri	Sat
			1	2	3	4
5	6	7	8	9	10	11
12	13	14	15	16	17	18
19	20	21	22	23	24	25
26	27	28	29	30	31	

FEBRUARY 2020

Sun	Mon	Tue	Wed	Thu	Fri	Sat
						1
2	3	4	5	6	7	8
9	10	11	12	13	14	15
16	17	18	19	20	21	22
23	24	25	26	27	28	29

MARCH 2020

Sun	Mon	Tue	Wed	Thu	Fri	Sat
1	2	3	4	5	6	7
8	9	10	11	12	13	14
15	16	17	18	19	20	21
22	23	24	25	26	27	28
29	30	31				

APRIL 2020

Sun	Mon	Tue	Wed	Thu	Fri	Sat
			1	2	3	4
5	6	7	8	9	10	11
12	13	14	15	16	17	18
19	20	21	22	23	24	25
26	27	28	29	30		

MAY 2020

Sun	Mon	Tue	Wed	Thu	Fri	Sat
					1	2
3	4	5	6	7	8	9
10	11	12	13	14	15	16
17	18	19	20	21	22	23
24	25	26	27	28	29	30
31						

JUNE 2020

Sun	Mon	Tue	Wed	Thu	Fri	Sat
	1	2	3	4	5	6
7	8	9	10	11	12	13
14	15	16	17	18	19	20
21	22	23	24	25	26	27
28	29	30				

JULY 2020

Sun	Mon	Tue	Wed	Thu	Fri	Sat
			1	2	3	4
5	6	7	8	9	10	11
12	13	14	15	16	17	18
19	20	21	22	23	24	25
26	27	28	29	30	31	

AUGUST 2020

Sun	Mon	Tue	Wed	Thu	Fri	Sat
						1
2	3	4	5	6	7	8
9	10	11	12	13	14	15
16	17	18	19	20	21	22
23	24	25	26	27	28	29
30	31					

SEPTEMBER 2020

Sun	Mon	Tue	Wed	Thu	Fri	Sat
		1	2	3	4	5
6	7	8	9	10	11	12
13	14	15	16	17	18	19
20	21	22	23	24	25	26
27	28	29	30			

OCTOBER 2020

Sun	Mon	Tue	Wed	Thu	Fri	Sat
				1	2	3
4	5	6	7	8	9	10
11	12	13	14	15	16	17
18	19	20	21	22	23	24
25	26	27	28	29	30	31

NOVEMBER 2020

Sun	Mon	Tue	Wed	Thu	Fri	Sat
1	2	3	4	5	6	7
8	9	10	11	12	13	14
15	16	17	18	19	20	21
22	23	24	25	26	27	28
29	30					

DECEMBER 2020

Sun	Mon	Tue	Wed	Thu	Fri	Sat
		1	2	3	4	5
6	7	8	9	10	11	12
13	14	15	16	17	18	19
20	21	22	23	24	25	26
27	28	29	30	31		

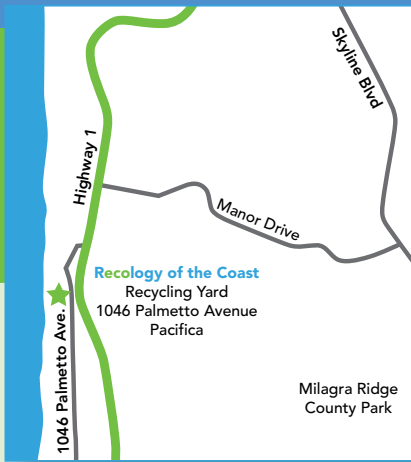
Pursuant to the Americans with Disabilities Act, those residents defined as disabled, and whose disability prevents their placing containers at the curb, shall have the option of placing their containers near their dwelling, visible from the curb. Recology of the Coast will pick up the refuse and recycling from this location or any other location suitable to both parties, and return the container to the same location. You must contact Recology of the Coast at 650-355-9000 to participate in this program.

2020 GREEN WASTE COLLECTION SCHEDULE

Your green waste container(s) are collected **every other week** on your regular garbage day. To find your collection schedule, match the color listed next to your address with the Collection Calendar on page 5.

STREET	ADDRESS	DAY	WEEK	STREET	ADDRESS	DAY	WEEK	STREET	ADDRESS	DAY	WEEK
10TH ST		F	YELLOW	CEDAR	844 - 1398	M	YELLOW	LINDA VISTA	839 - 888 & 909	F	YELLOW
11TH ST	202 - 391	F	YELLOW	CODO - MOBILE HOME PARK		THU	BLUE	LINDA VISTA	900 & 998	M	YELLOW
11TH ST	130 - 194	TU	BLUE	CORONA - MOBILE HOME PARK		THU	BLUE	LOMA VISTA		F	YELLOW
12TH ST	221 - 381	F	YELLOW	CORONA	901 - 935	M	YELLOW	LOS BANOS		TU	BLUE
12TH ST	101 - 165	TU	BLUE	CRESCENT AVE	146 - 180	F	YELLOW	MADRONE	20 - 171	TU	BLUE
13TH ST	321 - 397	F	YELLOW	CRESCENT	1112 - 1140	M	BLUE	MAIN ST	605 - 1409	M	YELLOW
13TH ST	141 ONLY	TU	BLUE	CULEBRA - MOBILE HOME PARK		THU	BLUE	MAIN ST	1410 - 1521	F	BLUE
14TH ST	297 - 397	F	YELLOW	CYPRESS	501 - 590	F	YELLOW	MAIN ST	1541 - 1734	F	YELLOW
14TH ST	101 - 200	TU	BLUE	CYPRESS	140 - 490	TU	BLUE	MARINE	505 - 570	F	YELLOW
16TH ST		F	YELLOW	CYPRESS	1400 ONLY	M	BLUE	MARINE	148 - 491	TU	BLUE
1ST ST		M	YELLOW	DATE		M	YELLOW	MONTANA	100 - 864	M	YELLOW
2ND ST		M	YELLOW	DEL MAR	100 ONLY	TU	BLUE	MONTARA BLVD		M	BLUE
3RD ST		M	BLUE	DERECHO - MOBILE HOME PARK		THU	BLUE	NEVADA		TU	BLUE
4TH ST		M	BLUE	DRAKE		M	YELLOW	NIZHONI		M	BLUE
5TH ST		F	YELLOW	EAST	1265 - 1650	F	YELLOW	NORTHLAKE		TU	BLUE
5TH ST		M	YELLOW	EAST	1165 ONLY	M	YELLOW	OAK AVE		TU	BLUE
6TH ST	300 - 598	F	YELLOW	EDISON		M	YELLOW	OCEAN	686 - 1001	TU	BLUE
6TH ST	168 - 296	M	YELLOW	ELLENDALE		TU	BLUE	ORVAL		TU	BLUE
7TH ST	227 - 595	F	BLUE	ELM		M	YELLOW	PARK		TU	BLUE
7TH ST	171 - 178	M	YELLOW	ETHELDORE	655 - 827	F	BLUE	PEARL		F	YELLOW
7TH ST	100 - 155	TU	BLUE	ETHELDORE	858 - 1862	F	YELLOW	PEDRO MT RD		M	YELLOW
8TH ST		F	BLUE	FARALLONE - 464 & 494 ONLY		F	BLUE	PINE		TU	BLUE
9TH ST	200 - 386	F	BLUE	FARALLONE	175 - 444	F	YELLOW	PRECITA		TU	BLUE
9TH ST	301/310/320	F	BLUE	FARALLONE	501 - 700	M	YELLOW	REEF POINT		TU	BLUE
ACACIA		M	YELLOW	FRANKLIN		M	YELLOW	RETIRO - MOBILE HOME PARK		THU	BLUE
ADMIRAL		F	BLUE	GEORGE		M	YELLOW	RIVERA RD		M	YELLOW
AFAR		F	YELLOW	GRANT		M	BLUE	SAN LUCAS		TU	BLUE
AIRPORT		TU	BLUE	HARTE	900 - 1175	M	BLUE	SAN RAMON		TU	BLUE
ALAMO		M	BLUE	HARTE	610 - 881	M	YELLOW	SEACLIFF		TU	BLUE
ALTA VISTA		M	YELLOW	HAWTHORNE		M	BLUE	SIERRA	506 - 782	F	BLUE
ALTON		TU	BLUE	HERMOSA	35 - 50	M	BLUE	SIERRA	800 - 895	F	YELLOW
ARBOR LANE		TU	BLUE	HILL		M	BLUE	STETSON	400 - 785	F	BLUE
ASPEN		M	YELLOW	HOWELL		M	BLUE	SUNSHINE VALLEY	1850 - 1924	F	YELLOW
AUDUBON	1225-1435	F	BLUE	IRVING		M	BLUE	SUNSHINE VALLEY	1151 - 1790	M	BLUE
AUDUBON	1201/1202/1210	M	YELLOW	IVY		M	BLUE	TAMARIND		M	YELLOW
AVENUE PORTOLA	1320/1350	M	BLUE	JORDAN		M	BLUE	TEMPLE		M	BLUE
AVERY		M	BLUE	JUNE HOLLOW		M	BLUE	TERRACE	96 - 497	TU	BLUE
BARRANCA - MOBILE HOME PARK		TH	BLUE	JULIANA AVE		TU	BLUE	TERRACE	510 - 621	F	YELLOW
BEACH		TU	BLUE	KANOFF		M	YELLOW	THE STRAND		TU	BLUE
BERNAL		TU	BLUE	KELMORE	511 - 779	F	BLUE	TIERRA ALTA	800 - 887	F	YELLOW
BIRCH		M	YELLOW	KELMORE	786 - 896	F	YELLOW	VALLECITOS		M	YELLOW
BONITA - MOBILE HOME PARK		THU	BLUE	LA GRANADA - MOBILE HOME PARK		THU	BLUE	VALLEMAR		TU	BLUE
BUENA VISTA	500 - 990	F	YELLOW	LA GRANDE		TU	BLUE	VALVERDE		M	BLUE
BUENA VISTA	1365 - 1670	M	BLUE	LANCASTER	500 - 775	F	YELLOW	VERMONT	502 - 698	F	YELLOW
CABRILLO HWY - 8445/9555/9575		F	YELLOW	LANCASTER	375 - 471	TU	BLUE	VERMONT	207 - 475	TU	BLUE
CABRILLO HWY	8200 - 9690	TU	BLUE	LAS FLORES		M	BLUE	VIRGINIA		TU	BLUE
CALIFORNIA	533 - 735	F	BLUE	LE CONTE	500/1280 - 1385	F	BLUE	VUE DE MAR	600 - 650	F	YELLOW
CALIFORNIA	33 - 475	TU	BLUE	LE CONTE	1220 - 1265	M	YELLOW	WIENKE		TU	BLUE
CARLOS		F	BLUE	LINCOLN		F	YELLOW	WYLVALE		TU	BLUE





Upcoming Events

Must show proof of residency

Compost Giveaways

March 7, 2020 and September 12, 2020
8:00am – 12:00pm *(or until supply is gone)*

Recycling Yard at 1046 Palmetto Avenue, Pacifica

Each residence may bring 2 – 30 gallon cans to collect compost.

Please note: Only cans will be filled, no boxes or bags.



Free Shredding Events

June 6, 2020 and December 5, 2020

8:00am – 12:00pm *(or until the truck is full)*

Recycling Yard

1046 Palmetto Avenue, Pacifica

Each residence may bring up to six (6) banker boxes of paper for free confidential shredding per event.



Important Resources

Recology of the Coast

2305 Palmetto Ave
Pacifica, CA 94044
Ph: 650-355-9000

www.Recology.com

Office Hours: Monday – Friday, 7:30 am – 4:30 pm



Coastside Freecycle Group

http://groups.yahoo.com/group/Coastside_freecycle

San Mateo County Recycling & Compost Hotline

888-442-2666

www.RecycleWorks.org



Recology of the Coast

2305 Palmetto Ave, Pacifica, CA 94044

Ph: 650-355-9000

www.Recology.com



PRST STD
U.S. Postage
PAID
Permit No. 63
Pacifica, CA 94044

Garbage Collection Services

Your monthly rate includes the garbage, recycle and green waste services but your monthly fee is determined by the size of your garbage container.

Recology of the Coast

Office Hours: Monday – Friday, 7:30 am – 4:30 pm

Payment options:

On-line at Recology.com

Self service by phone: 650.451.0185

In person or by mail: 2305 Palmetto Avenue, Pacifica

Phone assisted: 650.355.9000



Life Line Low Income Requirements

If you are on the PG&E Care program, please contact Customer Service at 650-355-9000 to sign up for low income rate. Rate applies to 30 gallon cart only.

If you meet the requirements, please provide a copy of your PG&E bill showing enrollment in the CARE Program to Customer Service and call 650-355-9000 or visit www.recology.com.

Bulky Goods Pick-Up Program

Items accepted at the discretion of the driver.

Residents in single-family, duplexes and triplexes are entitled to 4 curbside bulky items per calendar year (Refrigerators/Freezers no longer accepted for curbside pickup but may be taken to the Quarterly Recycling Day drop off (free or charge) or to the Recycling Yard (charges apply)

Each collection is limited to either 5-32 gallon bags OR 1 large item, no longer than 6 feet and no heavier than 100 pounds. If you wish to use more than 1 collection at the same time you may request service when ordered.

This service is offered on any of your pick-up days. Please notify our office at least 24 hours in advance of desired pick-up day. Bulky Pickups are non-transferable and cannot be carried over from year to year. Item(s) must be curbside/at the street by 6am for pick up. Driver will NOT remove item(s) from inside your home.

For more information or to schedule collections, please call 650-355-9000 or visit www.recology.com.



Debris Box Service

Recology of the Coast is the exclusive debris box hauler for the Granada and Montara Sanitary Districts. Debris boxes delivered Monday-Friday only. Payment due at time of order. Construction and Demolition (C & D) Recycling Ordinance documentation is available and should be requested at time of order. Recology of the Coast is not liable for damage done to your driveway/property from use of debris box. Owner/Renter/Occupant accepts responsibility should damage occur.