

# 2020 El Granada/Princeton/Miramar Residential Greenwaste Calendar & Service Brochure

## SERVICE REMINDERS

### COLLECTION TIMES:

All collection containers must be placed at **the street by 6 a.m.** on your service day. We recommend placing containers out the night before as pick-up times may vary. After service, please bring your containers back from the street as they should not sit out longer than 12 hours.

We will not service **ANY** container where the lids do not close completely. We are not responsible for any articles left on or near collection containers.

### EXTRA GARBAGE:

Extra garbage must be bagged and arrangements made with our office in advance for pickup. **Extra Bag Tags** are available for a fee by calling **Recology of the Coast** at **650-355-9000**. You may also schedule one of your free collections. See page 8 for more information.

### MISSED COLLECTIONS:

Please report any missed collections to our office by the following business day. We have a 24 hour messaging service so if you call after hours, please leave a detailed message and a Customer Service Representative will address your missed collection the following day, Monday – Friday.

### CHRISTMAS TREE RECYCLING:

Christmas Trees will be collected at the curb/street on your regular greenwaste collection day through **January 31** and should be cut to 4 feet or less in length. Those trees not picked up during the month above should be cut up and put into your green waste container(s). **Please remove all ornaments, tinsel, lights and stands. Flocked trees are ok.**

### HOLIDAY PICKUP FOR 2020



#### Thanksgiving Day

Regular pickup - have carts out by 5am

#### Christmas Day, Friday, 12/25/20

Service changed to Saturday, December 26th. Have all scheduled carts out by 5am

#### New Year's Day, Friday, 1/1/21

Service changed to Saturday, January 2nd. Have all scheduled carts out by 5am

**Please note:** 1 extra bag at no charge on each of these Saturday dates





## Quarterly Recycle Days

Below you will find the Special Item Recycling Drop-Off Days for 2020. Remember, disposal is **FREE** and only one (1) trip per household, please.  
**Must present id with district address.**

### El Granada, Miramar, Princeton

In the Burnham Strip parking lot at the end of Avenue Portola  
Time: 8:00am - 12:00noon

#### DATES:

January 25, 2020

April 25, 2020

July 25, 2020

October 24, 2020

For more information call:

650-355-9000 or 650-726-7093

#### ITEMS NOT ACCEPTED

Antifreeze & Motor Oil  
Concrete  
Hazardous Waste  
Packing Peanuts  
Paint, Aerosol Cans  
Painted & Pressure Treated Wood  
Pesticides  
Sheetrock  
Tires (large truck or tractors)



#### ITEMS ACCEPTED

Appliances (1 per household, refrigerators/freezers no charge)  
Batteries (auto & household)  
Carpet & Carpet padding (1 room only no larger than 12x12)  
Cell Phones, pagers  
Computers, Monitors, Keyboards  
Fluorescent bulbs  
Furniture  
Green Waste/Yard waste (limit of 4 - 30 gallon cans)  
Mattress/Box Spring (1 set only)  
Printers, Cartridges, Cables  
Scrap Metal & Metal Car Parts  
Small Fax & Copy Machines  
Stereos, TVs, VCRs  
Styrofoam (large blocks only)  
Tires (auto, motorcycle, pick-up) - limit of 4  
Untreated wood



## Single Stream Recycling

The Single-Stream Recycling Program allows you to put all your recyclables into the same rolling cart and will be serviced **every week!** Please place your cart curbside/at the street by **6 a.m.** on your regular service day for collection.



#### UNACCEPTABLE ITEMS:

Animal Waste  
Bubble wrap  
Ceramics  
Clothing  
Compostable bags  
Diapers  
Food contaminated packaging  
Furniture  
Garden hoses  
Packing peanuts  
Paper towels, napkins, facial tissue  
Photographs/Negatives  
Plastic Bags  
PVC pipes  
Styrofoam  
Unmarked plastics (plastics without the #1-#7 recycling symbol)

#### ACCEPTABLE ITEMS:

Aluminum (i.e. soda cans, **CLEAN** aluminum foil)  
Aseptic Containers (juice and soup boxes)  
Cardboard (extra cut down to 3ft x 3ft)  
Glass Bottles & Jars  
Mixed Paper (colored, computer, magazines)  
Plastics (containers #1-7)

For recycling and reuse options of the materials listed above, please visit San Mateo County RecycleWorks at [www.RecycleWorks.org](http://www.RecycleWorks.org).

# Recyclopedia

The following is an alphabetical listing of items that can be disposed or recycled in or around your area. Items shown in **BOLD** are picked up curbside. If you have any questions, please call **Recology of the Coast** at **650-355-9000** or visit **recology.com**.

**ALUMINUM FOIL** - Recycle cart (completely clean)

**ANTIFREEZE**<sup>1</sup> - Recycling Yard

**APPLIANCES**<sup>2</sup> - Recycling Yard

**BATTERIES**; auto, cell phone – Recycling Yard

**BATTERIES**; household – in sealed clear plastic bag on top of recycling cart

**BICYCLES** - Recycling Yard

**BOOKS** - hardbound and softbound books Discovery Book kiosk outside recycling yard

**BRANCHES** - Organics cart (cut to less than 3 feet in length and less than 3 inches in diameter)

**BRASS** - Recycling Yard

**BUILDING MATERIALS** - See Debris Box Information on page 4

**CANS** - Recycle cart (aluminum, bimetal, tin)

**CARDBOARD** - Extra cardboard - Recycling Yard

**CHRISTMAS TREES** - picked up curbside through January 31st, cut to 4ft in length or less.

**COMPOSTABLE BAGS** - green cart only

**COMPUTER PAPER** - Recycle cart

**CONCRETE** - See Debris Box Information  
**COPPER PIPE AND WIRE** - Recycling Yard

**DIRT** – Call the office for disposal options, 650-355-9000

**ELECTRONIC WASTE** - Recycling Yard (Zip Drives, Speakers, Monitors,

Keyboards, Printers, Fax Machines, Copy Machines, Power Cables, TVs, Typewriters, VCRs, Stereo Equipment, Cell Phones, Pagers)

**FLOWER POTS** - Recycle cart - plastic only

**FLUORESCENT/CFL BULBS** - Recycling Yard

**FOOD SCRAPS** – Garbage cart.

**FURNITURE** - Recycling Yard, On-Call Collection, Donate

**GARDEN HOSE** – Garbage cart

**GLASS CONTAINERS** - Recycle cart

**GREENWASTE** - Organics cart.

**HOUSEHOLD HAZARDOUS WASTE (HHW)** – call The County of San Mateo at 650-363-4718 to schedule an appointment

**JUNK MAIL** - Recycle cart

**LUMBER** - see Wood

**MAGAZINES** - Recycle cart

**MATTRESSES** – Standard mattress/box spring only at the Recycling Yard. Futons, posturepedic, memory foam, etc are NOT accepted.

**MOTOR OIL**<sup>1</sup> - Recycling Yard

**NEWSPAPER** - Recycle cart

**PAINT**; latex and oil base<sup>1</sup> – See Household Hazardous Waste

**PAPER** - Recycle cart (colored, computer, mixed)

**PAPER BAGS** - Recycle or Organics cart

**PHONE BOOKS** - Recycle cart

**PLASTIC BASKETS** - Recycle cart

**PLASTIC CONTAINERS** - (#1 - #7) Recycle cart or the Recycling Yard

**PLASTIC BAGS** – Garbage cart only

**PROPANE TANKS** – call The County of San Mateo at 650-363-4718 to schedule an appointment

**SATELLITE DISHES** - Recycling Yard or TV service provider

**SHARPS** - Recycling Yard.

**SHEETROCK/DRYWALL** - See Debris Box information on page 4

**SOILED PAPER PRODUCTS** - Organics cart

**STYROFOAM PEANUTS** – Garbage cart (bagged).

**STYROFOAM BLOCKS** – Recycling Yard

**TIRES**<sup>2</sup> - Recycling Yard

**TREE LIMBS, CUTTINGS** - Organics cart (cut to less than 3 feet in length and less than 3 inches in diameter)

**VITAMINS/MEDICATIONS** – Pacifica Police Department: 2075 Coast Highway confidential drop-off container

**WOOD** – Recycling Yard - Untreated, unpainted, unstained, lumber ONLY - NO pressed board, pressure treated or plywood accepted. NO tree branches, stumps, etc.

**YARD WASTE** - Organics Cart.

<sup>1</sup> A five-gallon limit per household, per month may apply.

<sup>2</sup> A fee will be charged for items such as: Refrigerators, tires, etc.

# RECYCLE YARD

The **Recology of the Coast Recycle Yard** is located at 1046 Palmetto Ave, in Pacifica. Hours of operation Tuesday, Thursday 8 – 4 and Saturday 8 – 1. Hours of Operation are seasonal. Closed Monday, Wednesday, Friday, Sunday and Holidays. Visit our website for days of service: [www.recology.com](http://www.recology.com).

## Items accepted at the Recycling Yard are:

- Antifreeze<sup>1</sup>
- Appliances<sup>2</sup>
- Car and Household Batteries
- Cellular Phones
- Computers<sup>2</sup>
- Televisions<sup>2</sup>
- Cooking Oil, used
- Fluorescent tubes and bulbs
- Furniture
- Latex (water-based) paint<sup>1</sup>
- Motor Oil and Filters<sup>1</sup>
- Scrap Metal



- Sharps (must be inside a biohazard container)
- Small Household Appliances (like microwaves, radios, space heaters)
- Styrofoam, packing blocks only
- Tires (auto and pick-up truck only)<sup>2</sup>
- Wood, unpainted & untreated

<sup>1</sup> A five-gallon limit per household, per month may apply.

<sup>2</sup> A fee will be charged for items such as: Refrigerators, computers, tires, etc.

For more information, please call our Customer Service Department at **650-355-9000** or visit us online at [www.recology.com](http://www.recology.com). Items accepted at discretion of Recycling lot attendant.

## The Recycle Yard is closed on the following holidays:

- New Year's Day
- Martin Luther King Day
- President's Day
- Saturday after Christmas Day and New Year's Day
- Memorial Day
- 4th of July
- Labor Day
- Weekend of the Fog Festival
- Thanksgiving Day
- Christmas Day

## Household Hazardous Waste (HHW) Information

The County of San Mateo offers free disposal of certain HHWs:

- Art and hobby supplies
- Furniture and metal polishes
- Household cleaners
- Oil and latex based paint
- Paint thinner
- Pesticides
- Pool chemicals
- Photographic chemicals



To schedule an appointment call the automated appointment line at **650-363-4718** or visit their website <http://smchealth.org/hhw/>

## RECYCLING THEFT:

It is illegal to remove recycling materials once they have been placed inside of a recycling cart. If you are a witness to this crime, please report it by calling the North Coast County Substation Business Line at: **650-573-2801**.



## Pharmaceutical & Sharps Disposal

Vitamins & Medications or Sharps (medical devices for self-injection or blood tests):

**North Coast Sub-Station: 500 California Ave, Moss Beach or Half Moon Bay Police Station: 537 Kelly St.**

For more information about Sharps and Pharmaceutical disposal visit <http://smchealth.org/hhw>



## GARBAGE PICKUP SERVICE REMINDERS:

Please place garbage containers curbside by 6 a.m. on your pickup day for service.

### UNACCEPTABLE ITEMS:

Ashes  
Dirt/Rocks/Bricks/Concrete  
Pesticides

Construction Debris  
E-Waste  
Paint

Hazardous Waste  
Motor oil

## Green Waste Service Reminders:

Please place grass clippings, leaves and small branches (cut to less than 3ft in length and less than 3in. in diameter) in your green waste container(s) and place curbside/at the street by **6 a.m.** for service.

### UNACCEPTABLE ITEMS

- Animal waste
- Ashes and sod
- Bamboo and palm fronds
- Building materials
- Cat litter
- Compostable bags
- Dirt, rock, and concrete

- Food Waste
- Garbage
- Plastic/biodegradable bags
- Poison oak
- Pumpkins and gourds
- Tree stumps and painted wood
- Sawdust





# Green Waste Collection Schedule

Your green waste container(s) are collected every other week on your regular garbage day. To determine if you are on the **YELLOW** or **BLUE** schedule, match the color listed next to your address on page 7 to the Collection Calendar below.

## JANUARY 2020

Sun	Mon	Tue	Wed	Thu	Fri	Sat
			1	2	3	4
5	6	7	8	9	10	11
12	13	14	15	16	17	18
19	20	21	22	23	24	25
26	27	28	29	30	31	

## FEBRUARY 2020

Sun	Mon	Tue	Wed	Thu	Fri	Sat
						1
2	3	4	5	6	7	8
9	10	11	12	13	14	15
16	17	18	19	20	21	22
23	24	25	26	27	28	29

## MARCH 2020

Sun	Mon	Tue	Wed	Thu	Fri	Sat
1	2	3	4	5	6	7
8	9	10	11	12	13	14
15	16	17	18	19	20	21
22	23	24	25	26	27	28
29	30	31				

## APRIL 2020

Sun	Mon	Tue	Wed	Thu	Fri	Sat
			1	2	3	4
5	6	7	8	9	10	11
12	13	14	15	16	17	18
19	20	21	22	23	24	25
26	27	28	29	30		

## MAY 2020

Sun	Mon	Tue	Wed	Thu	Fri	Sat
					1	2
3	4	5	6	7	8	9
10	11	12	13	14	15	16
17	18	19	20	21	22	23
24	25	26	27	28	29	30
31						

## JUNE 2020

Sun	Mon	Tue	Wed	Thu	Fri	Sat
	1	2	3	4	5	6
7	8	9	10	11	12	13
14	15	16	17	18	19	20
21	22	23	24	25	26	27
28	29	30				

## JULY 2020

Sun	Mon	Tue	Wed	Thu	Fri	Sat
			1	2	3	4
5	6	7	8	9	10	11
12	13	14	15	16	17	18
19	20	21	22	23	24	25
26	27	28	29	30	31	

## AUGUST 2020

Sun	Mon	Tue	Wed	Thu	Fri	Sat
						1
2	3	4	5	6	7	8
9	10	11	12	13	14	15
16	17	18	19	20	21	22
23	24	25	26	27	28	29
30	31					

## SEPTEMBER 2020

Sun	Mon	Tue	Wed	Thu	Fri	Sat
		1	2	3	4	5
6	7	8	9	10	11	12
13	14	15	16	17	18	19
20	21	22	23	24	25	26
27	28	29	30			

## OCTOBER 2020

Sun	Mon	Tue	Wed	Thu	Fri	Sat
				1	2	3
4	5	6	7	8	9	10
11	12	13	14	15	16	17
18	19	20	21	22	23	24
25	26	27	28	29	30	31

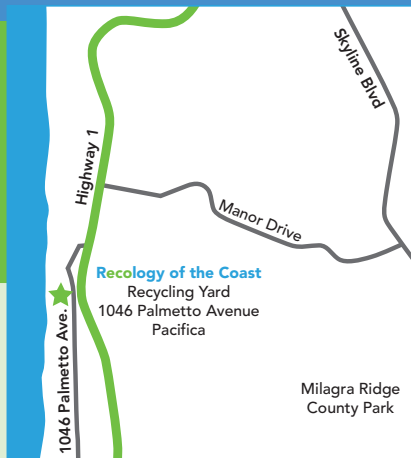
## NOVEMBER 2020

Sun	Mon	Tue	Wed	Thu	Fri	Sat
1	2	3	4	5	6	7
8	9	10	11	12	13	14
15	16	17	18	19	20	21
22	23	24	25	26	27	28
29	30					

## DECEMBER 2020

Sun	Mon	Tue	Wed	Thu	Fri	Sat
		1	2	3	4	5
6	7	8	9	10	11	12
13	14	15	16	17	18	19
20	21	22	23	24	25	26
27	28	29	30	31		

Pursuant to the Americans with Disabilities Act, those residents defined as disabled, and whose disability prevents their placing containers at the curb, shall have the option of placing their containers near their dwelling, visible from the curb. Recology of the Coast will pick up the refuse and recycling from this location or any other location suitable to both parties, and return the container to the same location. You must contact Recology of the Coast at 650-355-9000 to participate in this program.



## Upcoming Events

*Must show proof of residency*

### Compost Giveaways

**March 7, 2020 and September 12, 2020**

**8:00am – 12:00pm** (or until supply is gone)

**Recycling Yard at 1046 Palmetto Avenue, Pacifica**

Each residence may bring 2 – 30 gallon cans to collect compost.

*Please note:* Only cans will be filled, no boxes or bags.



### Free Shredding Events

**June 6, 2020 and December 5, 2020**

**8:00am – 12:00pm** (or until the truck is full)

**Recycling Yard**

**1046 Palmetto Avenue, Pacifica**

Each residence may bring up to six (6) banker boxes of paper for free confidential shredding per event.

### Important Resources

#### Recology of the Coast

2305 Palmetto Ave  
Pacifica, CA 94044  
Ph: 650-355-9000

[www.Recology.com](http://www.Recology.com)

Office Hours: Monday – Friday, 7:30 am – 4:30 pm



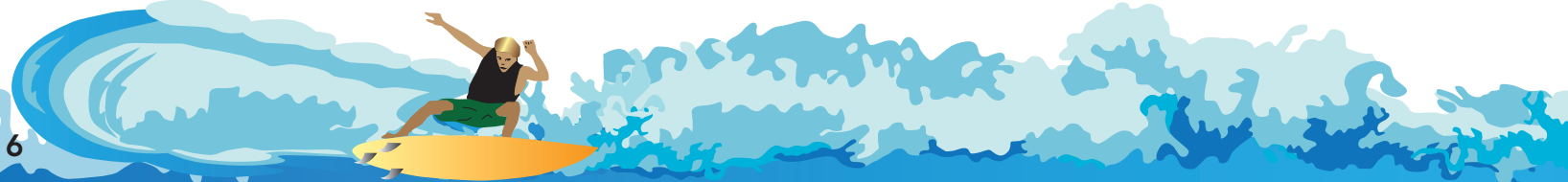
#### Coastside Freecycle Group

[http://groups.yahoo.com/group/Coastside\\_freecycle](http://groups.yahoo.com/group/Coastside_freecycle)

#### San Mateo County Recycling & Compost Hotline

888-442-2666

[www.RecycleWorks.org](http://www.RecycleWorks.org)



# 2020 GREEN WASTE COLLECTION SCHEDULE

Your green waste container(s) are collected **every other week** on your regular garbage day. To find your collection schedule, match the color listed next to your address with the Collection Calendar on page 5.

STREET	ADDRESS	DAY	WEEK
1ST AVE		TU	YELLOW
2ND AVE		TU	YELLOW
3RD AVE		TU	YELLOW
4TH AVE		TU	YELLOW
5TH AVE		TU	YELLOW
6TH AVE		TU	YELLOW
ALAMEDA AVE	265 - 465	TU	YELLOW
ALMERIA		W	BLUE
ALTO		TU	YELLOW
AVE ALHAMBRA	5/9 99 - 499	W	BLUE
AVENUE ALHAMBRA	505/555 - 990	THU	YELLOW
AVENUE CABRILLO	205 - 345	THU	YELLOW
AVENUE CABRILLO	314 - 730	TU	YELLOW
AVENUE GRANADA		W	BLUE
AVENUE PORTOLA	20 - 222	THU	YELLOW
AVENUE PORTOLA	167/305 - 618	W	YELLOW
BALBOA	706 - 954	W	BLUE
BALBOA	102 - 631	W	YELLOW
BRIDGEPORT		THU	YELLOW
BROADWAY		THU	YELLOW
CARMEL		W	BLUE
COLUMBIA		THU	YELLOW
COLUMBUS	1107 - 1182	THU	YELLOW
COLUMBUS	1306 - 1378	TU	YELLOW
COLUMBUS	114 - 1290	W	YELLOW
CORAL REEF		THU	YELLOW
CORNELL		THU	YELLOW
CORONADO	406 - 639	THU	YELLOW
CORONADO	120 - 347	W	YELLOW
CORONADO AVE	100 - 491	TU	YELLOW
CORTEZ		TU	YELLOW
DEL MONTE	114 & 122	THU	BLUE
DEL MONTE	101 - 273	W	YELLOW
DEL ORO		W	YELLOW
DOLORES		W	YELLOW
DOLPHINE		THU	BLUE

STREET	ADDRESS	DAY	WEEK
EL GRANADA BLVD		THU	BLUE
ESCALONA		W	BLUE
FERDINAND	307 and 330	THU	YELLOW
FERDINAND	107 - 562	W	YELLOW
FERDINAND	607 - 1123	W	BLUE
FRANCISCO	807 - 997	TU	YELLOW
FRANCISCO	120 - 795	W	YELLOW
FURTADO		TU	YELLOW
GUERRERO		TU	YELLOW
HARBOUR		THU	YELLOW
HARVARD		THU	YELLOW
HERMOSA		TU	YELLOW
HIGHLAND		THU	BLUE
ISABELLA	107 - 225	THU	YELLOW
ISABELLA	401 - 659	W	YELLOW
LEE AVE		TU	YELLOW
LEWIS		THU	BLUE
MADRID		W	BLUE
MADRONA	107 - 154	W	BLUE
MAGELLAN		TU	YELLOW
MALAGA		TU	YELLOW
MEDIO		TU	YELLOW
MIRADA		TU	YELLOW
MIRAMAR		TU	YELLOW
MONTECITO		W	BLUE
MORO		TU	YELLOW
NAVARRA		W	BLUE
OCEAN	123 - 183	THU	YELLOW
PALM BEACH	100 - 260	THU	YELLOW
PALMA	422 - 855	THU	YELLOW
PALMA	900 - 995	TU	YELLOW
PALMA	123 - 255	W	YELLOW
PALOMA		W	BLUE
PLAZA ALHAMBRA	523 - 625	THU	YELLOW
PLAZA ALHAMBRA	240 - 260	W	YELLOW
PRESIDIO		W	BLUE

STREET	ADDRESS	DAY	WEEK
PRINCETON AVE		THU	YELLOW
PROSPECT		THU	YELLOW
PURISSIMA		TU	YELLOW
ROYAL PALM		THU	YELLOW
SALVADOR		TU	YELLOW
SAN ANDREAS		TU	YELLOW
SAN CARLOS	507 - 1076	W	BLUE
SAN CARLOS	214 - 488	W	YELLOW
SAN CLEMENTE		W	YELLOW
SAN JUAN	300 - 555	W	BLUE
SAN JUAN	207 - 239	W	YELLOW
SAN PEDRO		W	YELLOW
SANTA ANNA	130/139	THU	YELLOW
SANTA MARIA		W	YELLOW
SANTIAGO		TU	YELLOW
SEA CREST CT		THU	YELLOW
SEA RANCH		THU	YELLOW
SEVILLA	446 - 466	THU	YELLOW
SEVILLA	106 - 434	W	BLUE
SHELTER COVE		THU	YELLOW
SOLANO		W	BLUE
SONORA	814 - 1006	THU	YELLOW
SONORA	114 - 807	W	BLUE
STANFORD		THU	YELLOW
SUNRISE CT		THU	YELLOW
TERRACE	18 - 27	TU	YELLOW
THE ALAMEDA	323 - 987	THU	YELLOW
THE ALAMEDA	200 - 314	W	YELLOW
VALENCIA		W	BLUE
VALLEJO	607 & 615	W	BLUE
VALLEJO	115 - 606	W	YELLOW
VASSAR		THU	YELLOW
VENTURA		TU	YELLOW
WESTPOINT		THU	YELLOW
YALE		THU	YELLOW

## Important Resources

### Recology of the Coast

2305 Palmetto Ave  
Pacifica, CA 94044  
Ph: 650-355-9000

[www.Recology.com](http://www.Recology.com)

Office Hours: Monday – Friday, 7:30 am – 4:30 pm



### Coastside Freecycle Group

[http://groups.yahoo.com/group/Coastside\\_freecycle](http://groups.yahoo.com/group/Coastside_freecycle)

### San Mateo County Recycling & Compost Hotline

888-442-2666

[www.RecycleWorks.org](http://www.RecycleWorks.org)



**Recology of the Coast**  
2305 Palmetto Ave, Pacifica, CA 94044  
Ph: 650-355-9000  
[www.Recology.com](http://www.Recology.com)



PRST STD  
U.S. Postage  
**PAID**  
Permit No. 63  
Pacifica, CA 94044

## Garbage Collection Services

Your monthly rate includes the garbage, recycle and green waste services but your monthly fee is determined by the size of your garbage container.

### Recology of the Coast

**Office Hours: Monday – Friday, 7:30 am – 4:30 pm**

**Payment options:** \_\_\_\_\_

On-line at **Recology.com**

Self service by phone: **650.451.0185**

In person or by mail: **2305 Palmetto Avenue, Pacifica**

Phone assisted: **650.355.9000**



### Life Line Low Income Requirements

If you are on the PG&E Care program, please contact Customer Service at 650-355-9000 to sign up for low income rate. Rate applies to 30 gallon cart only.

If you meet the requirements, please provide a copy of your PG&E bill showing enrollment in the CARE Program to Customer Service and call **650-355-9000** or visit **www.recology.com**.

### Bulky Goods Pick-Up Program

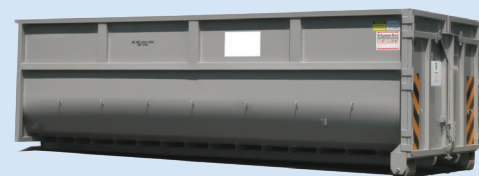
*Items accepted at the discretion of the driver.*

Residents in single-family, duplexes and triplexes are entitled to 4 curbside bulky items per calendar year (Refrigerators/Freezers no longer accepted for curbside pickup but may be taken to the Quarterly Recycling Day drop off (free or charge) or to the Recycling Yard (charges apply)

Each collection is limited to either 5-32 gallon bags OR 1 large item, no longer than 6 feet and no heavier than 100 pounds. If you wish to use more than 1 collection at the same time you may request service when ordered.

This service is offered on any of your pick-up days. Please notify our office at least 24 hours in advance of desired pick-up day. Bulky Pickups are non-transferable and cannot be carried over from year to year. Item(s) must be curbside/at the street by 6am for pick up. Driver will NOT remove item(s) from inside your home.

For more information or to schedule collections, please call **650-355-9000** or visit **www.recology.com**.



### Debris Box Service

**Recology of the Coast is the exclusive debris box hauler for the Granada and Montara Sanitary Districts.** Debris boxes delivered Monday-Friday only. Payment due at time of order. Construction and Demolition (C & D) Recycling Ordinance documentation is available and should be requested at time of order. Recology of the Coast is not liable for damage done to your driveway/property from use of debris box. Owner/Renter/Occupant accepts responsibility should damage occur.