

2016 Services & Rates

Effective March 1, 2016



Garbage Service – Weekly Pick-Up (Black Carts)		Wt Limits	One Cart (Weekly Service)	Monthly Rate Additional Cart (Weekly Service)
10-gallon micro can		20 lbs	\$7.09	
20-gallon cart		40 lbs	\$12.45	
32-gallon cart		60 lbs	\$17.67	\$12.48
45-gallon cart		90 lbs	\$25.60	
64-gallon cart		120 lbs	\$30.15	\$21.34
96-gallon cart		180 lbs	\$40.90	\$28.98
Garbage Service — Monthly Pick-Up			Monthly Rate	
10-gallon micro can			\$4.24	
32-gallon cart			\$5.93	
Miscellaneous Services			Per Occurrence	
Extra Garbage (32-gallon equivalent)			\$4.07	
Return Trip			\$8.26	
Carry-out Charge (per 25 ft, per month)			\$3.54	
Redelivery of Containers			\$11.80	
Cart Cleaning (per cart / per event)			\$8.85	
On-Call Bulky Waste Collection			Per Occurrence	
Refrigerators/Freezers			\$116.69	
Other Large Appliances			\$96.69	
Sofas, Chairs, Mattresses			\$111.69	



Recycling — Every-other-week service (Blue Carts)	
96-gallon cart (smaller carts available on request)	Included with garbage service



Food Scraps & Yard Debris — Every-other-week service (Green Carts)		Wt Limits	Monthly Rate
32-gallon cart		60 lbs	\$8.62
64-gallon cart		120 lbs	\$9.51
96-gallon cart		180 lbs	\$10.40
Extra yard debris (32-gallon equivalent)			\$2.36

Special Item Recycling

Drop-Off:

- Electronics**
Deseret Industries: 17935 Aurora Ave. N.
206.542.9447
Shoreline Goodwill: 14500 15th Ave. NE.
206.631.8454
- Household Batteries**
City Hall: 17500 Midvale Ave N.
Police Station: 1206 N 185th St.
- Unwanted Medicine**
Bartell Drugs: 18420 Aurora Ave. N
Takebackyourmeds.org
- Plastic Grocery Bags**
Shoreline grocery stores

Curbside Recycling:

Place next to recycle cart

- Fluorescent tubes and CFL bulbs
 - Wrap tubes in newspaper to prevent breakage
 - Place CFL bulbs in clean sealable bag
 - Limit: Two tubes per collection
- Small appliances
 - 2' x 2' x 2' or smaller
 - Less than 35 lbs
- Used motor oil
 - Put in clear plastic jug with screw top lid
 - Label jugs with name and address
 - Limit 2 gallons per collection



The Recology Store Bothell Now Open! Shoreline residents can drop off special items for recycling free of charge, such as Styrofoam™, electronics, batteries, textiles, used bicycles, CFL bulbs and car seats. Learn more at recologycleanscapes.com/store.

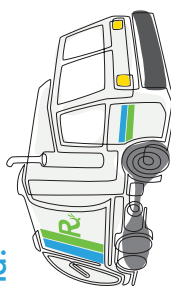


117 S Main St, Suite 300, Seattle, WA 98104

2016 Services and Rates

Inside this guide you will find:

- Your collection calendar
- 2016 services & rates
- Hazardous & special item disposal information
- Connect with us
 - Visit recologycleanscapes.com
 - Call 206.763.4444
 - Email shoreline@recology.com
 - Hours: Daily 8am – 5pm



This information can be made available on request to accommodate people with disabilities and those who need translation assistance.

Para información en español:
Để biết tin tức bằng tiếng Việt, xin gọi:
Чтобы получить информацию на русском языке, звоните по телефону:
한국어 안내 정보:
Call 206.763.4444

User Guide
A
January
2016

YOUR COLLECTION DAY IS

2016 Collection Calendar

Please place carts at curb before 7am

	M	T	W	T	F	S
JANUARY					1	2
	4	5	6	7	8	9
	11	12	13	14	15	16
	18	19	20	21	22	23
	25	26	27	28	29	30
FEBRUARY	1	2	3	4	5	6
	8	9	10	11	12	13
	15	16	17	18	19	20
	22	23	24	25	26	27
	29	1	2	3	4	5
MARCH	7	8	9	10	11	12
	14	15	16	17	18	19
	21	22	23	24	25	26
	28	29	30	31	1	2
APRIL	4	5	6	7	8	9
	11	12	13	14	15	16
	18	19	20	21	22	23
	25	26	27	28	29	30
MAY	2	3	4	5	6	7
	9	10	11	12	13	14
	16	17	18	19	20	21
	23	24	25	26	27	28
	30	31	1	2	3	4
JUNE	6	7	8	9	10	11
	13	14	15	16	17	18
	20	21	22	23	24	25
	27	28	29	30		

	M	T	W	T	F	S
JULY					1	2
	4	5	6	7	8	9
	11	12	13	14	15	16
	18	19	20	21	22	23
	25	26	27	28	29	30
AUGUST	1	2	3	4	5	6
	8	9	10	11	12	13
	15	16	17	18	19	20
	22	23	24	25	26	27
	29	30	31	1	2	3
SEPTEMBER	5	6	7	8	9	10
	12	13	14	15	16	17
	19	20	21	22	23	24
	26	27	28	29	30	1
OCTOBER	3	4	5	6	7	8
	10	11	12	13	14	15
	17	18	19	20	21	22
	24	25	26	27	28	29
NOVEMBER	31	1	2	3	4	5
	7	8	9	10	11	12
	14	15	16	17	18	19
	21	22	23	24	25	26
	28	29	30	1	2	3
DECEMBER	5	6	7	8	9	10
	12	13	14	15	16	17
	19	20	21	22	23	24
	26	27	28	29	30	31

GARBAGE: Collected weekly.

RECYCLING: Collected every other week, on blue colored weeks.

FOOD SCRAPS & YARD DEBRIS:
Collected every other week, on green colored weeks.

NO HOLIDAY COLLECTION:

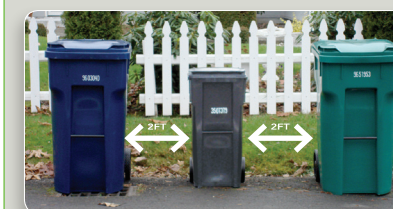
If your collection day falls on or after Thanksgiving or New Year's Day, your collection will be one day later that week.

COLLECTION ISSUES:

Call customer service within 24 hours to report missed collections. Visit our website for collection updates and weather delays.

CART PLACEMENT:

- Where possible, place carts:
- Two feet apart with lids opening toward the street
- Without blocking cars, mailboxes, sidewalks, or driveways
- Within five feet of the street
- Remove carts from street as soon as possible after collection.



recologycleanscapes.com/shoreline 206.763.4444



Recycle

No food, liquid, Styrofoam™ or loose plastic bags

Empty and Rinsed Clean Recyclables Only

- Place items loose in the recycling cart, not in bags or cartons.
- Place additional recyclables in clearly labeled sturdy bins or boxes next to the recycling cart.

Paper & Cardboard



Empty boxes & cartons

Empty paper cups

Flattened cardboard

Newspaper



Phone books

Wrapping paper

Mail, magazines, mixed paper

Empty paper bags

Plastic



Plastic pots, buckets & baskets

Lids (3" or wider)

Pill bottles (no prescription vials)

Plastic cups & food containers

PVC pipe (no longer than length of cart)

Glass

Metal



Bottles & jars

Aluminum & metal cans

Foil & foil trays

Scrap metal (less than 35lbs and 2' x 2' x 2')



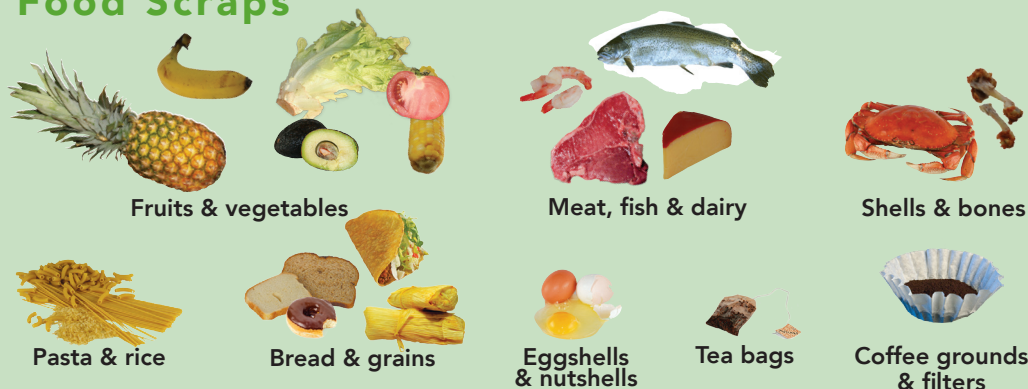
Food Scraps & Yard Debris

No plastic, glass or metal

Extra Yard Waste

- Extra charges apply. Details below.

Food Scraps



Fruits & vegetables

Meat, fish & dairy

Shells & bones

Pasta & rice

Bread & grains

Eggshells & nutshells

Tea bags

Coffee grounds & filters

Food-Soiled Paper



Greasy pizza boxes

Uncoated paper plates & cartons

Paper bags, towels & napkins

Shredded paper (loose or in paper bag)

Wooden popsicle sticks & chopsticks

Approved compostable packaging
Visit recologycleanscapes.com for a complete list

Yard Debris



Grass & weeds

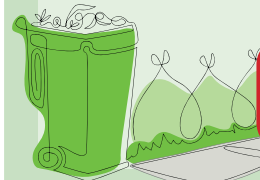
Leaves & twigs

Houseplants & flowers

Branches (under 4' long, 4" thick)

Put extra yard debris in:

- Heavy paper yard bags –OR–
- Bundles tied with fiber twine (4' x 2' x 2' limit) –OR–
- Rigid cans with handles and lids (32 gal., 60 lb. limit) marked "Yard."
- No food scraps allowed in extra yard waste.



NO yard debris in plastic bags or recycling carts.

Kitchen Tips

Collect food scraps and food-soiled paper in a washable, lidded container.



To keep your container clean:

- Line with used paper towels, newspaper, shredded paper, or compostable bags.
- Sprinkle food scraps with baking soda to limit odors.
- Freeze or refrigerate food scraps in container or compostable bag until collection day.



Garbage

No hazardous waste or prohibited items

Extra Garbage

- Extra charges apply.
- Put additional garbage in 32-gallon (or smaller) cans or bags.



Food-soiled plastic

Styrofoam™ containers

CDs

Utensils

Mirrors

Prescription vials

Incandescent light bulbs

Small lids, caps & tops (less than 3 in. wide)

Ziploc® food & single plastic bags

Ceramics & glassware (broken or unusable)

Empty toxic materials containers

Latex paint cans (dry & empty)

Diapers, pet waste & kitty litter (bagged)

Hazardous Material Disposal

Not allowed in garbage, recycling or yard debris.



- ▶ Fluorescent bulbs
- ▶ Needles and syringes
- ▶ Household cleaners
- ▶ Automotive fluids and batteries

- ▶ Plumbing liquids
- ▶ Lawn chemicals and pesticides
- ▶ Flammable gas containers

Locate a Household Hazardous Waste facility for drop-off:
206.296.4692 HazWasteHelp.org

Products marked CAUTION, WARNING, DANGER, or POISON require safe disposal of hazardous material.