



EMPTY & CLEAN
RECYCLABLES
ONLY

Paper & Cardboard



Plastic Containers



Glass Bottles & Jars



Metal

(Limit 2' x 2' x 2')



No Food, Liquid, Styrofoam™ or Loose Plastic Bags

recology.com/des-moines

Special Disposal Required

These Items Are Not Accepted in Any Container



NO TVs, monitors, computers

NO Fluorescent tubes or bulbs

NO Cell phones



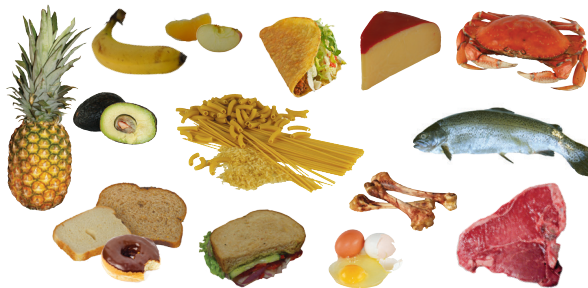
Learn more:

206.477.4466 | TakeltBackNetwork.org



Food Scraps & Yard Debris

Food Scraps



Food-Soiled Paper



Yard Debris



No Plastic, Glass or Metal



117 S Main St, Suite 300, Seattle, WA 98104

2018 Service Guide

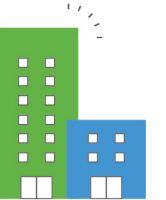
Commercial

Services and Rates

New rates take effect January 1, 2018

In This Brochure:

- ▶ Services and rates
- ▶ What to recycle and compost
- ▶ Special collection services
- ▶ Hazardous and special item recycling instructions



Visit recology.com/des-moines to:

Reduce Waste and Recycle More

- ▶ Request posters, container labels, and educational resources
- ▶ Sign up for recycling or food scraps and yard debris service
- ▶ Schedule a free waste audit

Manage Your Services

- ▶ Adjust your collection service or container size
- ▶ Log in to your online account to view your collection calendar or to sign up for electronic billing
- ▶ Report a missed collection



Waste Less. Save More.

Reducing waste is one of the best ways to save on your monthly bill.

To Waste Less at Work:

- ▶ Stop junk mail at catalogchoice.org
- ▶ Print double-sided
- ▶ Start a workplace "Green Team"

Call to Request Free:

- ▶ On-site waste audits and technical assistance
- ▶ Posters, container labels, and educational resources
- ▶ Recycling training for your business

recology.com/des-moines

Other Collection Services

These items can be collected for a fee:

Furniture and Bulky Items



Call to schedule a pick up:
206.762.4900

On-Call Bulky Item Collection	Per Item
Furniture and Large Appliances (e.g.desks, filing cabinets, bookcases)	\$64.13

Commercial

Services and Rates

Effective January 1, 2018

Cart Service

Weekly Non-Compacted Waste	
Cart Size	Monthly Rate Per Cart*
20-gallon Cart (15"W x 16"D x 21"H)	\$25.57
32-gallon Cart (19"W x 24"D x 38"H)	\$28.70
64-gallon Cart (27"W x 29"D x 41"H)	\$39.53
96-gallon Cart (29"W x 34"D x 46"H)	\$49.69

Miscellaneous Services	Per Occurrence
Extra Garbage (per 32-gallon equivalent)	\$5.49
Return Trip	\$7.67
Overweight Container	\$4.35
Redelivery of Containers	\$12.79
Cart Cleaning (per cart)	\$12.79

Weekly Recycling Collection

Recycling is included with your garbage service at no additional cost.

Weekly Food Scraps & Yard Debris Collection	
	Monthly Rate Per Cart*
96-gallon cart	\$16.96

CUSTOMER SERVICE

PHONE 206.762.4900 TEXT 206.399.9268

EMAIL desmoines@recology.com

DAILY HOURS 8am to 5pm

WEBSITE recology.com/des-moines

Container Service

Weekly Non-Compacted Waste	
Container Size	Monthly Rate Per Container*
1 Cubic Yard (40"L x 62"W x 25"H)	\$91.66
1.5 Cubic Yard (40"L x 62"W x 34"H)	\$133.43
2 Cubic Yard (34"L x 72"W x 45"H)	\$172.47
3 Cubic Yard (43"L x 72"W x 48"H)	\$250.56
4 Cubic Yard (51"L x 72"W x 56"H)	\$323.24
6 Cubic Yard (66"L x 80"W x 71"H)	\$468.59
8 Cubic Yard (71"L x 80"W x 86"H)	\$603.08

Weekly Compacted Waste	
Container Size	Monthly Rate Per Container*
1 Cubic Yard	\$176.21
1.5 Cubic Yard	\$259.44
2 Cubic Yard	\$339.40
3 Cubic Yard	\$499.33
4 Cubic Yard	\$671.55
6 Cubic Yard	\$959.62

Miscellaneous Fees	
	Per Occurrence
Return Trip	\$12.79

*All container sizes may be serviced multiple times per week. Additional rates available on recology.com/des-moines.

Roll-Off Container Service

Non-Compacted Waste	Delivery Fee	Daily Container Rent	Per Haul or Occurrence**
Container Size			
10 Cubic Yard (12'L x 8'W x 4.5'H)	\$115.04	\$6.40	\$179.47
20 Cubic Yard (16.5'L x 8'W x 6.5'H)	\$115.04	\$6.40	\$205.54
30 Cubic Yard (18.5'L x 8'W x 7.5'H)	\$115.04	\$6.40	\$231.61
40 Cubic Yard (20.5'L x 8'W x 9'H)	\$115.04	\$6.40	\$257.69

Compacted Waste	
Container Size	Per Haul or Occurrence**
10 Cubic Yard	\$211.41
20 Cubic Yard	\$237.49
30 Cubic Yard	\$263.58
40 Cubic Yard	\$289.64

**A disposal fee of \$148.05/ton will be charged in addition to the haul fee.

